



## School Garage

47 Buxton Road, Whaley Bridge, High Peak, SK23 7HX

### Former Car Garage well positioned on Buxton Road

**2,096 sq ft**  
(194.72 sq m)

- On Site Parking
- Three Phase Electric
- Showroom
- Yard Space
- Warehouse
- Shutter

# School Garage, 47 Buxton Road, Whaley Bridge, High Peak, SK23 7HX

## Summary

Available Size	2,096 sq ft
Price	Offers in the region of £425,000
Rateable Value	£9,800 as of 1st April 2023
VAT	To be confirmed
Legal Fees	Each party to bear their own costs
EPC Rating	D

## Description

The property comprises of a car showroom, a workshop and a former spray booth room. All three units are separately accessed and there is a office/storeroom. There is a large concrete surface yard to the back of the property. The unit situated within an enclosed development secured by gate and has 3 phase electric.

The plot of land which has redevelopment potential is 4,250 sq ft

## Location

The site is situated within the Town of Whaley Bridge, in High Peak Borough, Derbyshire, located in the centre of Whaley Bridge on Buxton Road. Whaley Bridge lies on the edge of the Peak District between Manchester (17 miles to the North West) and Buxton (6 miles to the south).

## Accommodation

The accommodation comprises the following areas:

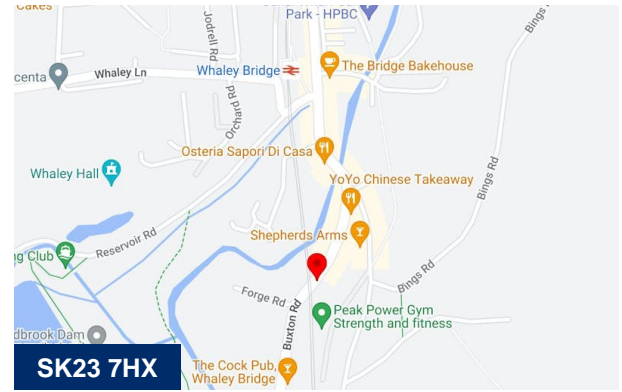
Name	sq ft	sq m	Availability
Ground - Showroom	715	66.43	Available
Ground - Workshop	831	77.20	Available
Ground - Spray Booth	429	39.86	Available
Ground - Office	121	11.24	Available
<b>Total</b>	<b>2,096</b>	<b>194.73</b>	

## Viewings

Strictly by appointment with sole agents Hallams Property Consultants.

## Terms

The property is available by way of freehold disposal.



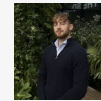
## Viewing & Further Information



### Anthony Howcroft

01625 262222

ahowcroft@hallams.com



### Ed Hobson

07775 871157

ehobson@hallams.com