



Stores Cottage Icold Road, Greystoke – CA11 0UG

Offers in Region of £185,000

PFK

Stores Cottage Icold Road

Greystoke, Penrith

Delightful sandstone, two bedroom cottage with additional attic room located in the popular village of Greystoke. The property is immaculately presented and well worthy of your attention. No onward chain.

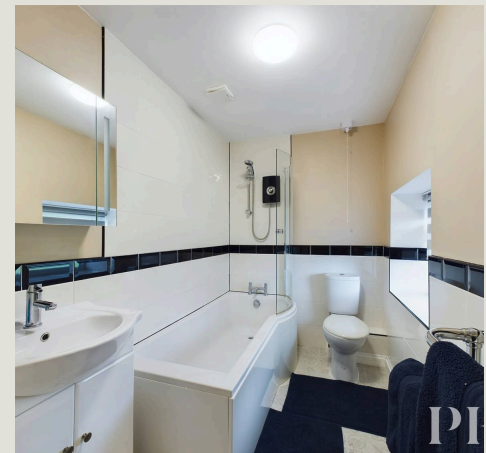
Council Tax band: B

Tenure: Freehold

EPC Energy Efficiency Rating: D

EPC Environmental Impact Rating:

- Sandstone Cottage
- Two Bedrooms
- Fitted Modern Kitchen
- Popular Village Location
- Good range of village amenities
- Additional Attic Room
- No garden area
- Council Tax - Band B
- EPC - D
- Tenure - Freehold





Entrance Hall

Accessed via part glazed, uPVC entrance door.
Radiator and door to:-

Living/Dining Room

13' 6" x 14' 6" (4.11m x 4.41m)

Bright reception room with large window to the front elevation. Fireplace recess with tiled hearth and wooden mantel above housing electric stove, TV point, radiator, wood effect laminate flooring and built in, double storage cupboard (also housing the hot water cylinder). Space for small dining table.

Bathroom

8' 6" x 5' 5" (2.59m x 1.66m)

Partly tiled bathroom fitted with three piece suite comprising P-shaped bath with electric shower over, WC, and wash hand basin in vanity storage unit with LED mirror above. Obscure window to rear aspect and chrome towel rail.

Kitchen

8' 8" x 9' 1" (2.63m x 2.78m)

Another bright living space, open plan from the hallway and fitted with a range of modern wall and base units with under unit lighting, complementary butcher block effect worktops, stylish painted wood upstands and stainless steel sink/drainers unit with mixer tap. Built in electric oven and ceramic hob with stainless steel extractor over, and integrated fridge freezer. Spot lighting, radiator and two windows to the front elevation.

Bedroom 1

7' 9" x 10' 7" (2.36m x 3.23m)

Front aspect, double bedroom with wall lights, radiator, built in wardrobe, further built in cupboard and door to stairs providing access to the attic room.

Bedroom 2

8' 3" x 9' 5" (2.52m x 2.88m)

Double bedroom with radiator and two obscure windows to the rear elevation.

Attic Room



Entrance Hall

Accessed via part glazed, uPVC entrance door. Radiator and door to:-

Living/Dining Room

13' 6" x 14' 6" (4.11m x 4.41m)

Bright reception room with large window to the front elevation. Fireplace recess with tiled hearth and wooden mantel above housing electric stove, TV point, radiator, wood effect laminate flooring and built in, double storage cupboard (also housing the hot water cylinder). Space for small dining table.

Bathroom

8' 6" x 5' 5" (2.59m x 1.66m)

Partly tiled bathroom fitted with three piece suite comprising P-shaped bath with electric shower over, WC, and wash hand basin in vanity storage unit with LED mirror above. Obscure window to rear aspect and chrome towel rail.

Kitchen

8' 8" x 9' 1" (2.63m x 2.78m)

Another bright living space, open plan from the hallway and fitted with a range of modern wall and base units with under unit lighting, complementary butcher block effect worktops, stylish painted wood upstands and stainless steel sink/drain unit with mixer tap. Built in electric oven and ceramic hob with stainless steel extractor over, and integrated fridge freezer. Spotlighting, radiator and two windows to the front elevation.

Bedroom 1

7' 9" x 10' 7" (2.36m x 3.23m)

Front aspect, double bedroom with wall lights, radiator, built in wardrobe, further built in cupboard and door to stairs providing access to the attic room.

Bedroom 2

8' 3" x 9' 5" (2.52m x 2.88m)

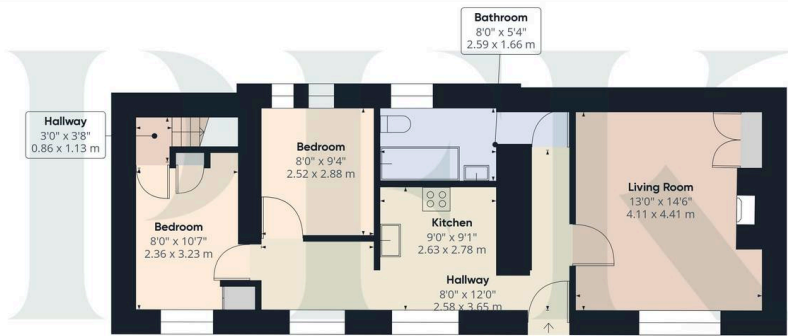
Double bedroom with radiator and two obscure windows to the rear elevation.

Attic Room

8' 8" x 10' 11" (2.64m x 3.34m)







GIRAFFE 360



PFK Estate Agents

9-10 Devonshire Chambers, Penrith, Cumbria - CA11 7SS

01768 862135

penrith@pfk.co.uk

www.pfk.co.uk

PFK

