



## St. Brides Place, St. Brides-Super-Ely

**£250,000**

- Vacant Possession - No Onward Chain
- 3 Bedroom Semi-Detached House with countryside views
- Open Plan Lounge/Diner
- Extended Fitted Kitchen
- off Street Parking
- EPC Rating: D



 3  2  2



01446 772857  
[enquiries@pablack.co.uk](mailto:enquiries@pablack.co.uk)





## About the property

Three-bedroom semi-detached house in a quiet location in St Brides Super Ely with countryside views front and back. The property needs updating and offers good potential.

Ground floor includes: Porch, Entrance Hall, Open Plan Lounge/Diner, Extended Kitchen, Utility Area, and Cloakroom.

First floor includes: Three Bedrooms and a Family Bathroom.

Outside features good-sized front and rear gardens, a single garage, and off-street parking.

St Brides Place is close to Peterston-Super-Ely with a village shop, pubs, school, hall, church, and local facilities. Easy access to Cardiff via St Fagans.







## Accommodation

### Porch

Aluminium front door.

### Hallway

Double glazed window, stairs to first floor, radiator, tiled floor.

### Lounge / Diner

22' 1" x 12' 8" ( 6.73m x 3.86m )

Double glazed windows front and rear. Two radiators.

Laminate flooring.

### Kitchen

9' x 15' 10" (Max) ( 2.74m x 4.83m (Max) )

Double glazed windows front and rear. Wall and base units.

Space for electric cooker and appliances. Cooker hood.

Stainless steel sink. Tiled splashback. Storage cupboard.

Breakfast bar. Radiator.

### Utility

7' 2" x 4' 4" ( 2.18m x 1.32m )

Double glazed door and window to rear. Floor-standing

Worcester oil boiler. Radiator. Tiled floor. Door to W/C.

### Cloakroom

Obscure window. W/C and basin. Tiled floor.

### First Floor Landing

Obscure window. Loft access. Storage cupboard.

### Bedroom One

11' 11" x 10' 10" ( 3.63m x 3.30m )

Double glazed window to front. Radiator.

### Bedroom Two

10' 2" x 10' 6" ( 3.10m x 3.20m )

Double glazed window to rear. Radiator.

### Bedroom Three

7' 11" x 8' 10" (Max) ( 2.41m x 2.69m (Max) )

Double glazed windows front and side. Radiator. Storage cupboard.

### Bathroom

Obscure window. Bath, basin, radiator. Tiled wall. Electric shower.

### Outside

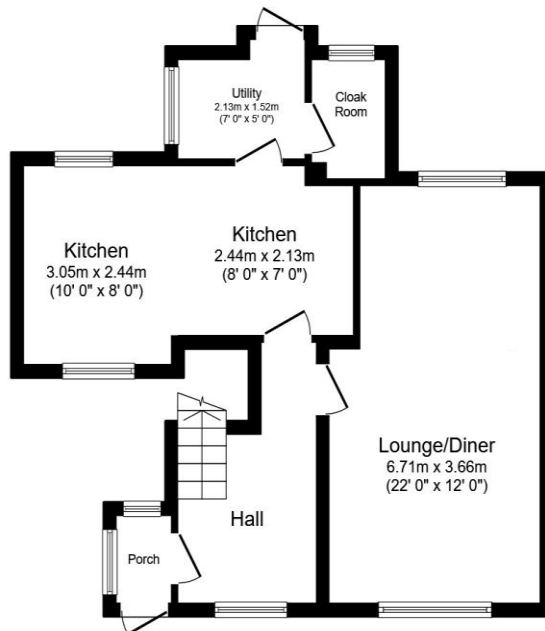
#### Front Of Property

Patio, grass, shrubs, driveway.

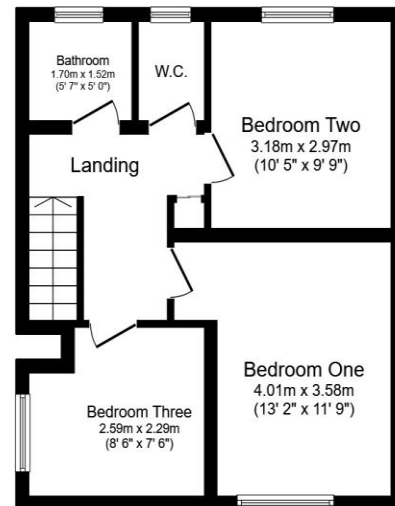
#### Rear Garden

Mainly lawn. Storage shed. Cold water tap.

## Floorplan



**Ground Floor**  
Floor area 52.1 sq.m. (561 sq.ft.)



**First Floor**  
Floor area 42.8 sq.m. (461 sq.ft.)

Total floor area: 94.9 sq.m. (1,022 sq.ft.)

This floor plan is for illustrative purposes only. It is not drawn to scale. Any measurements, floor areas (including any total floor area), openings and orientations are approximate. No details are guaranteed, they cannot be relied upon for any purpose and do not form any part of any agreement. No liability is taken for any error, omission or misstatement. A party must rely upon its own inspection(s). Powered by [www.Propertybox.io](http://www.Propertybox.io)

## Important Information

Note while we endeavour to make our sales details accurate and reliable, if there is any point which is of particular interest to you, please contact the office and we will be pleased to confirm the position for you. We have not personally tested any apparatus, equipment, fixtures, fittings or services and cannot verify they are in working order or fit for their purposes. Nothing in these particulars is intended to indicate that carpets or curtains, furnishings or fittings, electrical goods (whether wired or not). Gas fires or light fittings or any other fixtures not expressly included form part of the property offered for sale. This computer generated Floorplan, if applicable, is intended as a general guide to the layout and design of the property. It is not to scale and should not be relied upon for dimensions. Tenure: We cannot confirm the tenure of the property as we have not had access to the legal documents. The buyer is advised to obtain verification from their solicitor or surveyor.

Peter Alan Limited is registered in England and Wales under company number 2073153, Registered Office is Cumbria House, 16-20 Hockliffe Street, Leighton Buzzard, Bedfordshire, LU7 1GN. VAT Registration Number is 500 2481 05. For activities relating to regulated mortgages and non-investment insurance contracts, Peter Alan Limited is an appointed representative of Connells Limited which is authorised and regulated by the Financial Conduct Authority. Connells Limited's Financial Services Register number is 302221. Most buy-to-let