

Class E for Rent - £2,500 per month

Mitcham Road, London, SW17 9NG



KEY FEATURES:

- PRIMARILY LOCATED • HAIRDRESSER AND BEAUTY • GOING CONCERN • PREMIUM £140,000 • ESTABLISHED BUSINESS

Description

Details

Residenza would like to take this opportunity to present a Class E unit in Tooting.

Postcode: SW17 9NG

Usage: Class E

Rent: £30,000 per annum

Rates: £3,500 per annum 2023/2024

Lease remaining: 7 years.

Rent Review: Next Oct 2023

Floor area: 945 Sq. Ft approx.

Spacious and versatile layout, offering 946 Sq/Ft of usable area, ready to be customized to your business requirements.

Don't miss this incredible opportunity to secure your space in Tooting SW17's thriving commercial scene. Contact us today to schedule a viewing and discuss your business needs. Your success starts with the right location! Elevate your business at the heart of Tooting!

Book your viewing now and take the first step toward a brighter future.

Location

Location

Situated along a busy retail parade in the vibrant Tooting Town Centre, this property enjoys high foot traffic and excellent visibility.

The nearest rail station is Tooting Junction (0.4 miles) offering both Southern & Thameslink services.

The nearest Underground is Tooting Broadway (0.2 miles) offering Northern Line services.

There is a bus stop only steps away with plenty of Bus routes.

Tooting is a multi-cultural town with all types of multi-national shops, restaurants, and Bars.

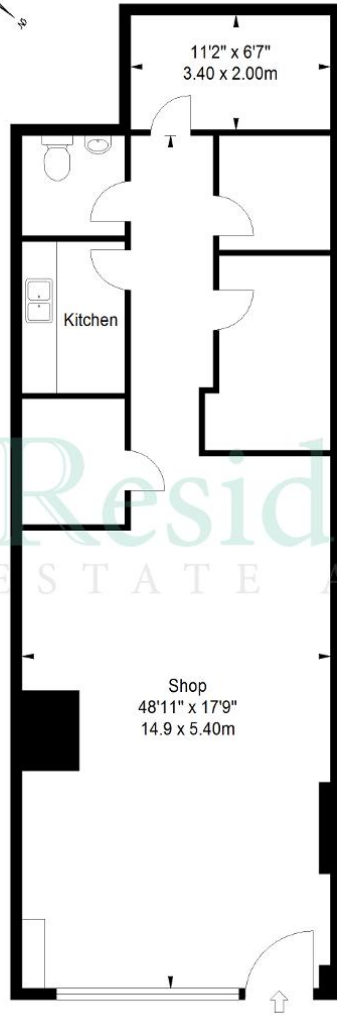




Floorplan(s)

Mitcham Road, SW17

Approximate Gross Internal Area
945 sq ft / 87.81 sq m



Ground Floor

ILLUSTRATION FOR IDENTIFICATION PURPOSES ONLY

ALL MEASUREMENTS ARE MAXIMUM, AND INCLUDE WINDOW BAYS AND WARDROBES WHERE APPLICABLE
THIS PLAN MUST NOT BE REPRODUCED BY ANY OTHER PERSON WITHOUT PERMISSION