



Flat 3, 3 Lyons Crescent, Tonbridge, Kent, TN9 1FB
£195,000



Flat 3, 3 Lyons Crescent, Tonbridge, Kent, TN9 1FB

£195,000

Doorknobs are delighted to present this spacious and beautifully maintained one-bedroom apartment, ideally located in the heart of Tonbridge—just a short stroll from the mainline station.

Location

Located in the heart of central Tonbridge, Lyons Crescent offers the perfect mix of convenience and charm. Just a short walk from the mainline station, with direct trains to London in around 40 minutes, it's ideal for commuters.

Residents enjoy easy access to High Street shops, cafés, restaurants, and supermarkets, along with nearby Tonbridge Castle, Haysden Country Park, and excellent local schools including Tonbridge Grammar.

With great transport links, riverside walks, and a friendly, safe community, Lyons Crescent is one of Tonbridge's most desirable and well-connected addresses.

Description

The property welcomes you with a generous entrance hall complete with an entry phone system, leading into a bright and airy open-plan kitchen/living space. The living area is neutrally decorated and features two Juliette balconies at the front, allowing for an abundance of natural light.

The modern kitchen is fitted with sleek black gloss units, complemented by a white worktop. Included appliances are a fridge/freezer, washing machine, oven, and hob.

The double bedroom is generously sized, featuring a large front-facing window and mirrored built-in wardrobes for ample storage.

The bathroom comprises a full-sized bath with overhead shower, hand basin, and WC, along with a large storage cupboard and tiled flooring.

Permit parking is available on the road outside the property.

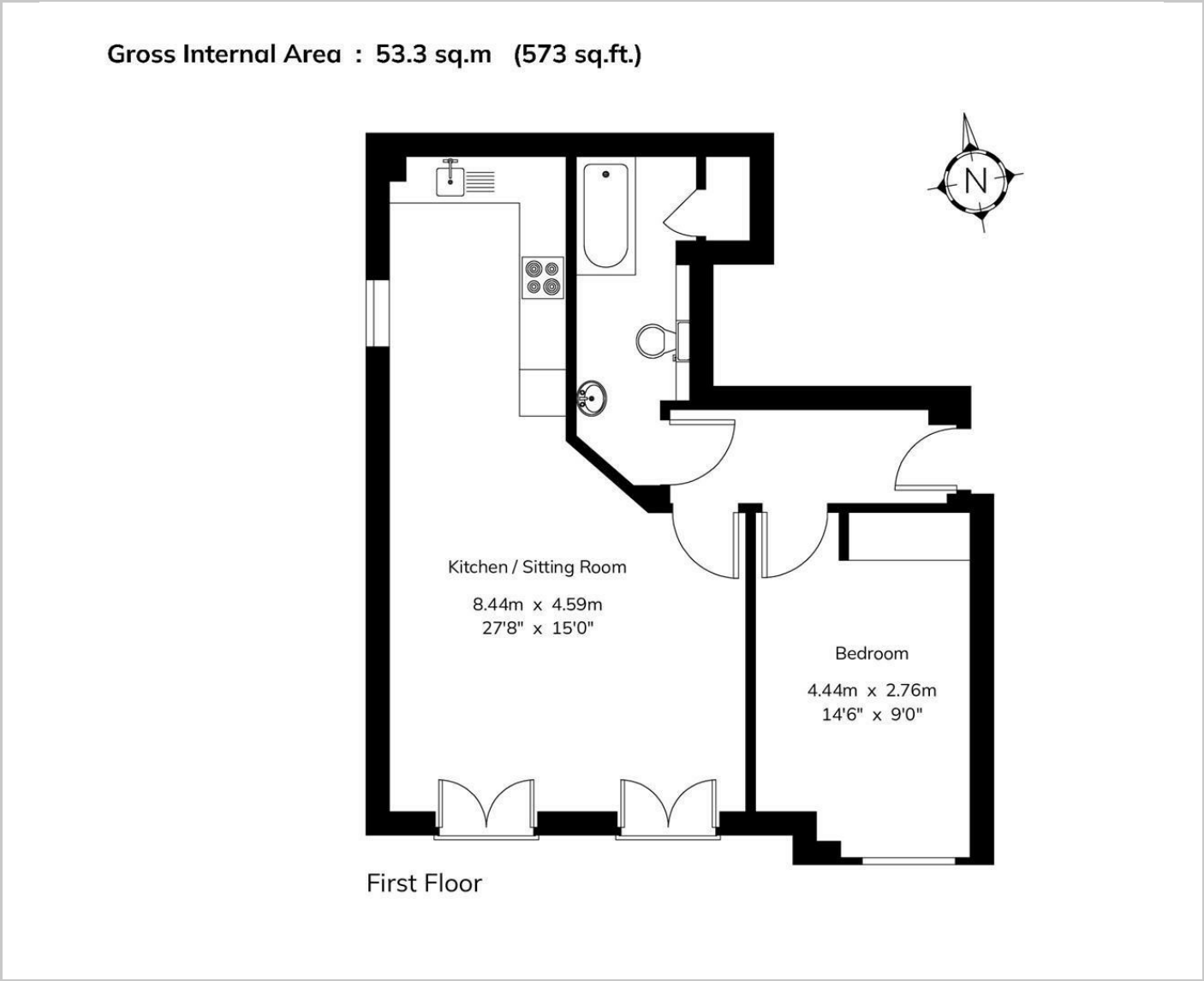
Lease Information

The property is leasehold with 109 year remaining on the lease. The ground rent is currently set to £200 per annum, with the service charge at £2101.76 per annum.



Council Tax Band: C

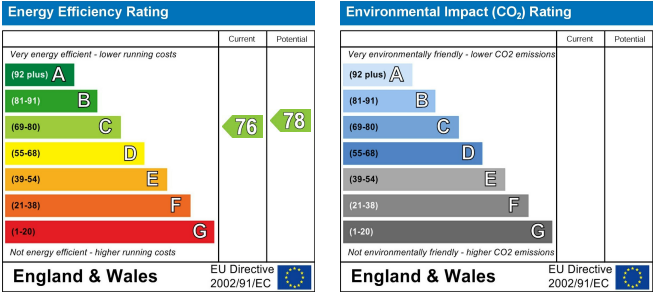
Floor Plans



Area Map



Energy Performance Graph



These particulars, whilst believed to be accurate are set out as a general outline only for guidance and do not constitute any part of an offer or contract. Intending purchasers should not rely on them as statements of representation of fact, but must satisfy themselves by inspection or otherwise as to their accuracy. No person in this firms employment has the authority to make or give any representation or warranty in respect of the property.