



6 Gage Ridge, Forest Row  
£475,000

MANSELL  
**McTAGGART**  
Trusted since 1947



## 6 Gage Ridge

### Forest Row

A unique opportunity to acquire this spacious three double bedroom terrace property situated within close proximity to Michael Hall school. Located within walking distance to the village centre and requiring a degree of modernisation the property briefly comprises; storm porch, entrance hall with storage cupboards, kitchen with space for free standing appliances, living/dining room with door to the rear garden. On the first floor there are two double bedrooms and family bathroom. The master bedroom on the second floor boasts impressive views over the surrounding countryside and village. Externally the property can be accessed via the double garage with electric doors leading to a mature garden and patio area. The property is being offered with no onward chain.







## 6 Gage Ridge

Situated in a favoured cul de sac in Forest Row between the village and Ashdown Forest with an easy footpath access to Michael Hall Rudolf Steiner School. Forest Row village centre with its exceptionally varied and diverse range of shops, galleries, cafes and restaurants is accessible by car or footpath. The nearest town of East Grinstead is within four miles with its more extensive shopping, leisure amenities and main line rail service to Victoria/London Bridge. Bus services pass through the village to a number of other major towns including Tunbridge Wells, Brighton, Crawley and Haywards Heath. Sports facilities locally include a number of golf courses, Lingfield Park , Plumpton and Brighton Racecourses and Weirwood Reservoir. The area is well represented with a wide range of both private and state schools including Michael Hall, Brambletye, Worth, Cumnor House, Greenfields and Sackville all within ten miles. Forest Row village primary school is also within walking distance.





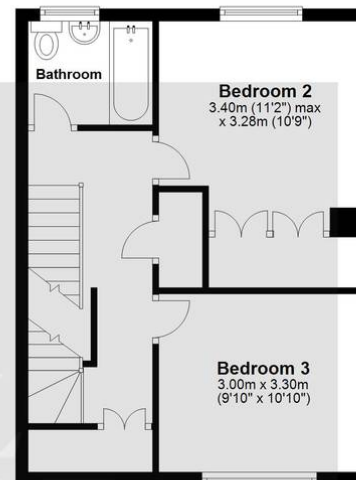
### Ground Floor

Main area: approx. 39.5 sq. metres (425.7 sq. feet)  
Plus garages, approx. 27.7 sq. metres (298.4 sq. feet)



### First Floor

Approx. 39.9 sq. metres (429.1 sq. feet)



### Second Floor

Approx. 22.9 sq. metres (246.9 sq. feet)



Main area: Approx. 102.3 sq. metres (1101.6 sq. feet)

Plus garages, approx. 27.7 sq. metres (298.4 sq. feet)

Whilst every attempt has been made to ensure the accuracy of the floor plan contained here, measurements of doors, windows, rooms and any other item are approximate and no responsibility is taken for any error, omission, or misstatement. This plan is for illustrative purposes only and should only be used as such by any prospective purchaser.  
Plan produced using PlanUp.

## Mansell McTaggart Forest Row

Mansell McTaggart, Lower Road - RH18 5HE

01342 826682

fr@mansellmctaggart.co.uk

[www.mansellmctaggart.co.uk/branch/forestrow/](http://www.mansellmctaggart.co.uk/branch/forestrow/)

Consumer Protection from Unfair Trading Regulations 2008 We have not tested any apparatus, equipment, fixtures, fittings or services and so cannot verify that they are in working order or fit for purpose. You are advised to obtain verification from your solicitor or surveyor. References to the tenure of a property are based on information supplied by the seller. We have not had sight of the title documents and a buyer is advised to obtain verification from their solicitor. Items shown in photographs are not included unless specifically mentioned within the sales particulars, but may be available by separate negotiation. We advise you to book an appointment to view before embarking on any journey to see a property, and check its availability.