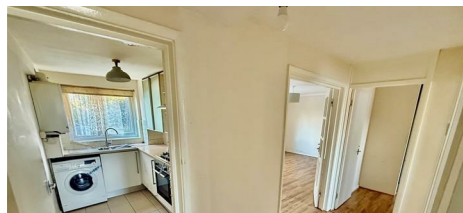




# Parkfields

Estates





## September Court, 1 Dormers Wells Lane , Southall, UB1 3HR

Welcome to this charming two-bedroom apartment located at September Court, on Dormers Wells Lane in Southall. This ground floor property, offers a comfortable living space ideal for cash and investment buyers.

As you enter, you will find a welcoming reception room that provides a perfect area for relaxation or entertaining guests. The apartment features two well-proportioned bedrooms, making it suitable for small families, couples, or individuals seeking extra space. The bathroom is conveniently located, ensuring ease of access for all residents.

One of the notable aspects of this property is its prime location just off Uxbridge Road, which offers excellent transport links and a variety of local amenities. Residents will appreciate the convenience of nearby shops, restaurants, and parks, making it an attractive option for those who enjoy a vibrant community atmosphere.

It is important to note that this apartment comes with a low lease of 42 years, which may be a consideration for potential buyers. This property presents a unique opportunity for those looking to invest in the Southall

Asking Price £150,000



25 September Court, 1 Dormers Wells Lane  
, Southall, UB1 3HR



- 42 YEAR LEASE
- LOUNGE
- GROUND FLOOR
- SUITABLE FOR CASH BUYERS
- KITCHEN
- JUST BY UXBRIDGE ROAD
- TWO BEDROOMS
- BATH/WC
- NO CHAIN



[Directions](#)



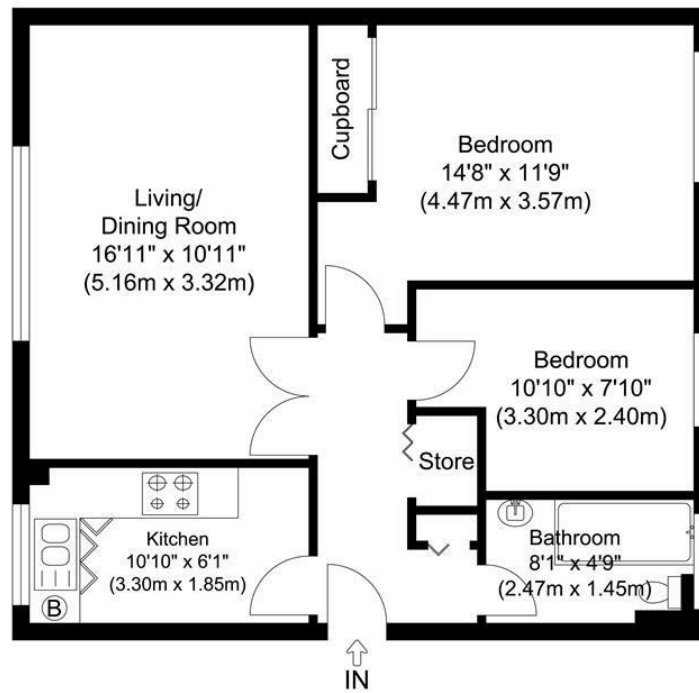


<https://www.parkfields-estates.com>



<https://www.parkfields-estates.com>

## Floor Plan



Ground Floor

Total Gross Internal Area  
603.85 sq. ft.  
( 56.10 sq. m)



## September Court, Dormers Wells Lane, Southall, UB1

Illustration for identification purposes only, measurements are approximate, not to scale.

These particulars, whilst believed to be accurate are set out as a general outline only for guidance and do not constitute any part of an offer or contract. Intending purchasers should not rely on them as statements of representation of fact, but must satisfy themselves by inspection or otherwise as to their accuracy. No person in this firms employment has the authority to make or give any representation or warranty in respect of the property.

1 The Crescent, Southall, Middlesex, UB1 1RE  
Tel: 0208 571 0253 Email: [info@parkfields-estates.com](mailto:info@parkfields-estates.com) <https://www.parkfields-estates.com>

