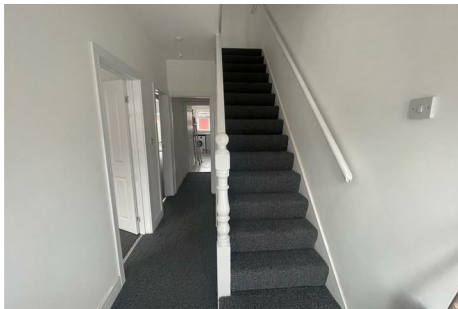




Parkfields Estates



Woodlands Road , Southall, UB1 1EE

Parkfields Estates are pleased to offer for rent this very good sized and spacious property located in a prominent position in New Southall. The property comprises of; Reception room , Kitchen, Bathroom/W.C., Four Bedroom, The house itself, has been recently decorated and is very well presented. Be quick! available asap

EALING COUNCIL BAND: D

£2,700

70 Woodlands Road
, Southall, UB1 1EE



[Directions](#)





Floor Plan

These particulars, whilst believed to be accurate are set out as a general outline only for guidance and do not constitute any part of an offer or contract. Intending purchasers should not rely on them as statements of representation of fact, but must satisfy themselves by inspection or otherwise as to their accuracy. No person in this firms employment has the authority to make or give any representation or warranty in respect of the property.

