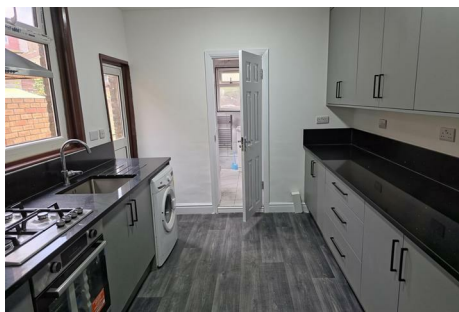




Parkfields

Estates



Albert Road , Southall, UB2 5HY

A WELL PRESENTED FAMILY HOME LOCATED IN THE HEART OF OLD SOUTHALL. Accommodation is spacious throughout and includes; LOUNGE, KITCHEN, FOUR BEDROOMS AND FAMILY BATHROOM/WC. To the outside there are PRIVATE GARDENS. Located just moments from WESTERN ROAD with plenty of facilities including day to day shops and bus routes. There are a number of preferred schooling options within easy reach including; FEATHERSTONE PRIMARY SCHOOL. Early viewings are highly recommended.

Local Authority: London Borough of Ealing
Council Tax Band: C

£2,800

9 Albert Road

, Southall, UB2 5HY



- SPACIOUS MID TERRACE
- BATHROOM/WC
- SCHOOLS NEARBY
- LOUNGE
- 4 BEDROOMS
- KITCHEN
- EASY DISTANCE TO AMENITIES



[Directions](#)





Floor Plan

These particulars, whilst believed to be accurate are set out as a general outline only for guidance and do not constitute any part of an offer or contract. Intending purchasers should not rely on them as statements of representation of fact, but must satisfy themselves by inspection or otherwise as to their accuracy. No person in this firms employment has the authority to make or give any representation or warranty in respect of the property.

