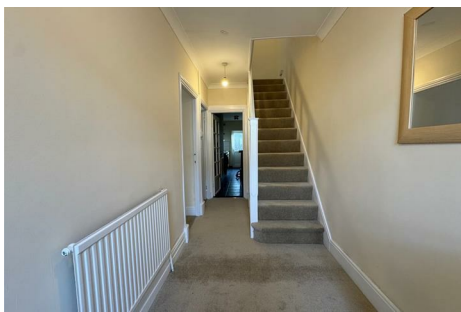




Parkfields

Estates



Trinity Road , Southall, UB1 1ES

Delightful mid-terrace house offers a perfect blend of comfort and space, making it an ideal family home. With three generously sized bedrooms, this property is larger than average.

TWO Reception rooms, Fitted Kitchen, First Floor Bathroom

The location on Trinity Road is particularly appealing, offering easy access to local amenities, schools, and transport links, making it a prime choice for families and professionals alike.

AVAILABLE NOW

EALING COUNCIL TAX BAND D

£2,800

123 Trinity Road
, Southall, UB1 1ES

 3

 1

 2

 C



[Directions](#)





Floor Plan

These particulars, whilst believed to be accurate are set out as a general outline only for guidance and do not constitute any part of an offer or contract. Intending purchasers should not rely on them as statements of representation of fact, but must satisfy themselves by inspection or otherwise as to their accuracy. No person in this firms employment has the authority to make or give any representation or warranty in respect of the property.

