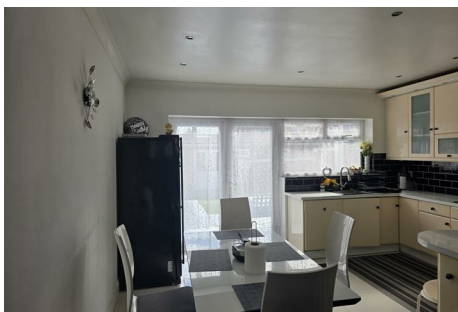




Parkfields

Estates



North Hyde Lane , Southall, UB2 5SG

Parkfields Estates are pleased to offer for RENT THIS well presented 3 bedroom House, features include Spacious Through Lounge, Ground floor WC, extended Fitted Kitchen, First Floor Bathroom. Off Street Parking.

Situated close to local schools, shops and public transport easy access to Heathrow.

Hounslow Council Tax BAND D

£2,800

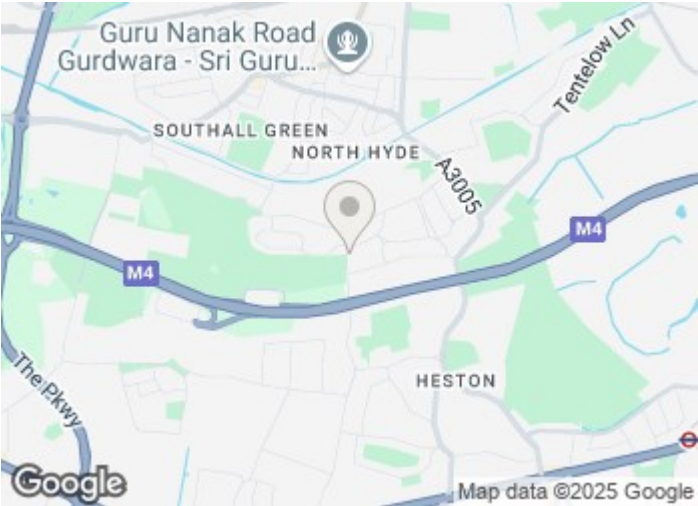
159 North Hyde Lane
, Southall, UB2 5SG

 3

 1

 1

 D



[Directions](#)



Floor Plan

These particulars, whilst believed to be accurate are set out as a general outline only for guidance and do not constitute any part of an offer or contract. Intending purchasers should not rely on them as statements of representation of fact, but must satisfy themselves by inspection or otherwise as to their accuracy. No person in this firms employment has the authority to make or give any representation or warranty in respect of the property.

