



Parkfields

Estates



Long Lane

Hillingdon, Uxbridge, UB10 9PB

Nestled in the desirable area of Long Lane, Hillingdon, this charming house presents an excellent opportunity for those seeking a new home in Uxbridge. With the potential to extend, subject to planning permission, this property offers the chance to create your dream living space tailored to your needs.

Conveniently located, residents will enjoy easy access to the A40 motorway, making commuting a breeze and providing excellent links to central London and beyond. The surrounding area boasts a selection of reputable schools, making it an ideal choice for families looking to settle in a community that values education.

One of the standout features of this property is that it comes with no chain, allowing for a smooth and efficient purchase process. This is particularly advantageous for buyers eager to move in without unnecessary delays.

Offers Over £630,000

232 Long Lane

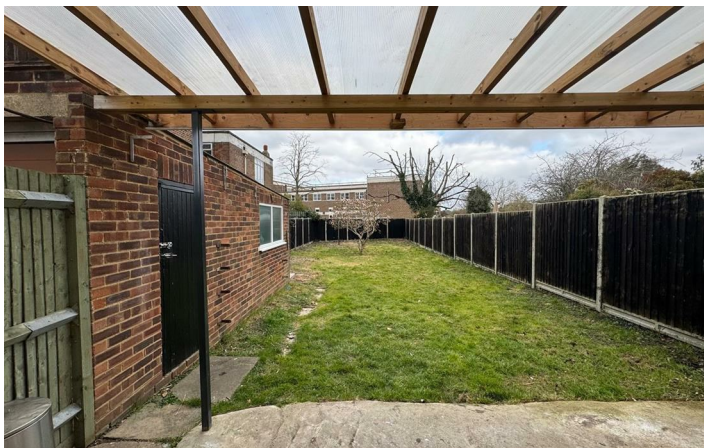
Hillingdon, Uxbridge, UB10 9PB



- POTENTIAL TO EXTEND (STPP)
- SPACIOUS SEMI DETACHED
- DESIERABLE LONG LANE LOCATION
- EASY ACCESS TO SCHOOLS AND A40
- LONG REAR GARDEN
- SIDE SPACE
- NO CHAIN



Directions



Floor Plan



Long Lane, Hillingdon, UB10

Illustration for identification purposes only, measurements are approximate, not to scale.

These particulars, whilst believed to be accurate are set out as a general outline only for guidance and do not constitute any part of an offer or contract. Intending purchasers should not rely on them as statements of representation of fact, but must satisfy themselves by inspection or otherwise as to their accuracy. No person in this firms employment has the authority to make or give any representation or warranty in respect of the property.

Energy Efficiency Rating		
	Current	Potential
Very energy efficient - lower running costs		
(92 plus) A		87
(81-91) B		
(69-80) C		
(55-68) D	64	
(39-54) E		
(21-38) F		
(1-20) G		
Not energy efficient - higher running costs		
England & Wales		EU Directive 2002/91/EC