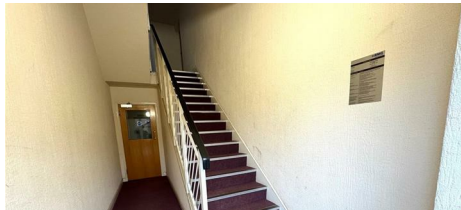




Parkfields

Estates





Frensham Close , Southall, UB1 2YQ

Welcome to this charming two-bedroom apartment located on Frensham Close in Southall. Spanning an inviting 552 square feet, this delightful residence is situated on the second floor, offering a peaceful retreat with lovely views.

Upon entering, you will find a well-proportioned reception room that serves as the heart of the home, perfect for both relaxation and entertaining. The apartment has been recently decorated, providing a fresh and modern feel throughout. The two bedrooms are comfortably sized, making them ideal for a small family, a couple, or even as a home office space.

The property features a well-appointed bathroom, ensuring convenience for daily routines. Additionally, the apartment benefits from allocated parking, a valuable asset in this bustling area.

With a lease of 91 years remaining, this apartment presents an excellent opportunity for both first-time buyers and investors alike. Its prime location in Southall offers easy access to local amenities, transport links, and

Asking Price £279,950

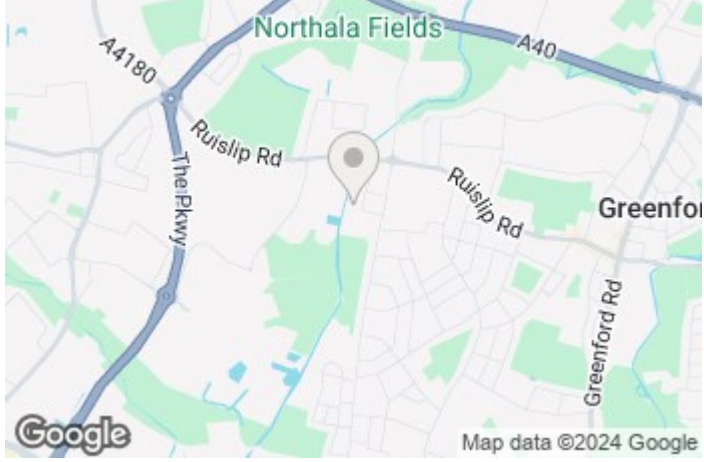
62 Frensham Close , Southall, UB1 2YQ



- SPACIOUS SECOND FLOOR APARTMENT
- TWO BEDROOMS
- BATHROOM/WC
- RECENTLY DECORATED
- LOUNGE
- BORDERS OF SOUTHALL / GREENFORD / NORTHOLT
- ALLOCATED PARKING SPACE
- KITCHEN



[Directions](#)

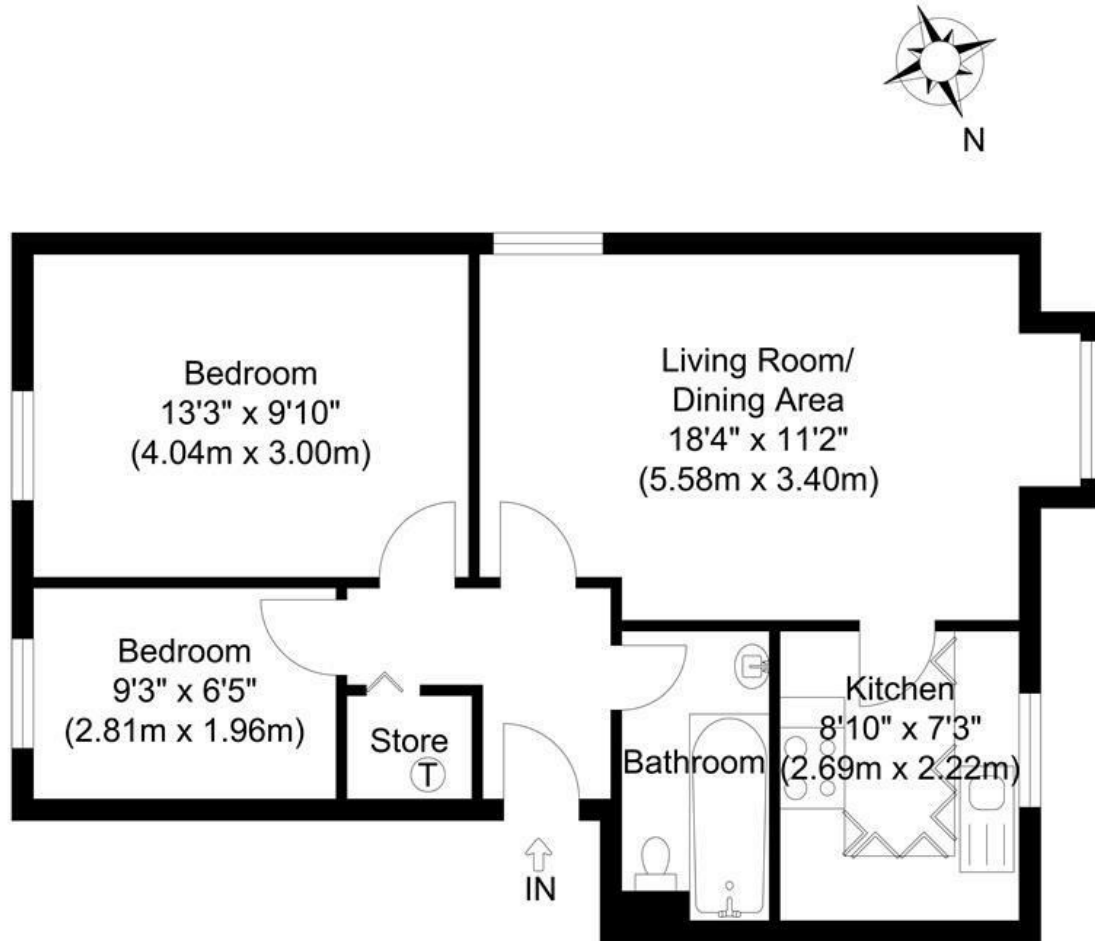


<https://www.parkfields-estates.com>



<https://www.parkfields-estates.com>

Floor Plan



Second Floor
Total Gross Internal Area
551.97 sq. ft.
(51.28 sq. m)

Second Floor, Frensham Close, Southall, UB1

Illustration for identification purposes only, measurements are approximate, not to scale.

These particulars, whilst believed to be accurate are set out as a general outline only for guidance and do not constitute any part of an offer or contract. Intending purchasers should not rely on them as statements of representation of fact, but must satisfy themselves by inspection or otherwise as to their accuracy. No person in this firm's employment has the authority to make or give any representation or warranty in respect of the property.

1 The Crescent, Southall, Middlesex, UB1 1RE

Tel: 0208 571 0253 Email: info@parkfields-estates.com <https://www.parkfields-estates.com>

