



Parkfields

Estates



Southall Court

Lady Margaret Road, Southall, UB1 2RG

A GREAT BUY TO LET INVESTMENT LOCATED IN SOUTHALL COURT ON LADY MARGARET ROAD. Accommodation includes; TWO BEDROOMS, LOUNGE, KITCHEN and BATHROOM/WC. To the outside there are COMMUNAL GARDENS WITH PARKING FACILITIES AVAILABLE. Located just moments from SOUTH ROAD, WITH PLENTY OF BUS ROUTES AND FACILITIES NEAR BY. NO ONWARD CHAIN.

Local Authority: London Borough of Ealing
Council Tax Band: B

Lease Length: 108 Years Approximately
Ground Rent: £150.00 Per Annum

Asking Price £269,950

1 Southall Court

Lady Margaret Road, Southall, UB1 2RG



- GROUND FLOOR
- LOUNGE
- LONG LEASE - 108 YEARS
- LOCATED ON LADY MARGARET ROAD
- KITCHEN
- TWO BEDROOMS
- BATHROOM/WC

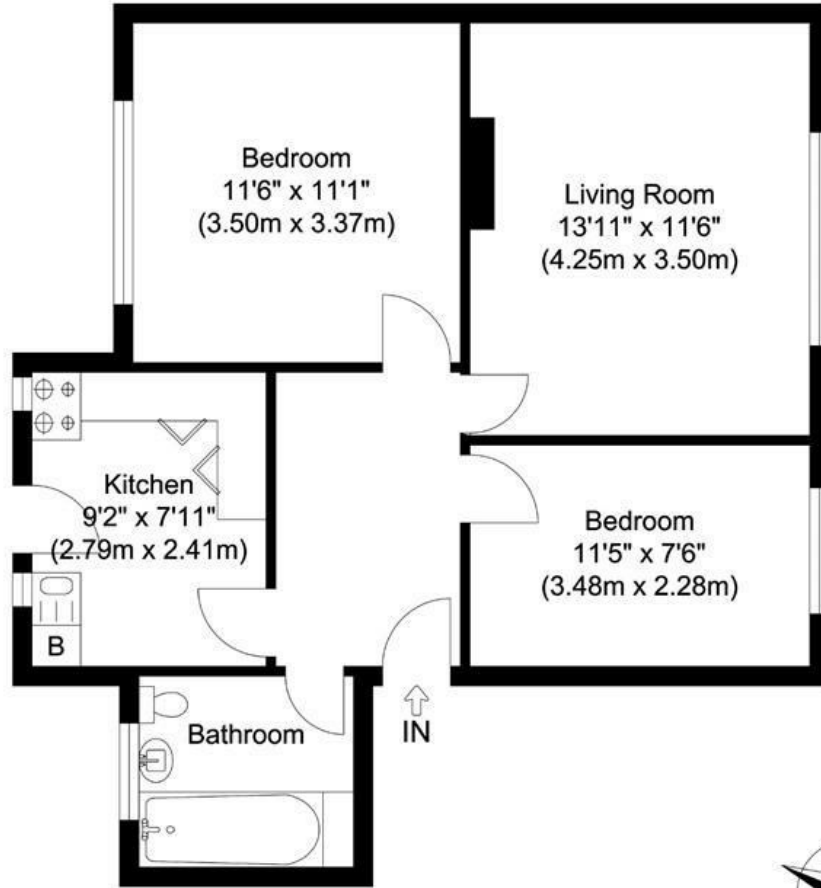
Lease Details



Directions



Floor Plan



Total Gross Internal Area
580.60 sq. ft.
(53.94 sq. m)

Ground Floor, Southall Court, Lady Margaret Road, Southall, UB1

Illustration for identification purposes only, measurements are approximate, not to scale.

These particulars, whilst believed to be accurate are set out as a general outline only for guidance and do not constitute any part of an offer or contract. Intending purchasers should not rely on them as statements of representation of fact, but must satisfy themselves by inspection or otherwise as to their accuracy. No person in this firm's employment has the authority to make or give any representation or warranty in respect of the property.

Energy Efficiency Rating		Current	Potential
Very energy efficient - lower running costs			
(92 plus) A			
(81-91) B			
(69-80) C			
(55-68) D		65	76
(39-54) E			
(21-38) F			
(1-20) G			
Not energy efficient - higher running costs			
England & Wales		EU Directive 2002/91/EC	