



Parkfields

Estates



Great West Road , Hounslow, TW5 9AP

Nestled in the charming Great West Road of Hounslow, this delightful 1930s semi-detached house boasts a generous 5 bedrooms, perfect for a growing family. The property features a spacious interior, offering a cosy reception room ideal for relaxing evenings.

One of the bedrooms is conveniently located downstairs and comes with its own en suite, providing flexibility and comfort for guests or family members. In addition to the family bathroom, there are two more shower rooms on the ground floor, ensuring convenience for all residents.

This property may not be the epitome of modernity, but its well-maintained condition exudes a sense of warmth and homeliness. With ample off-street parking available, parking will never be a hassle for you or your visitors.

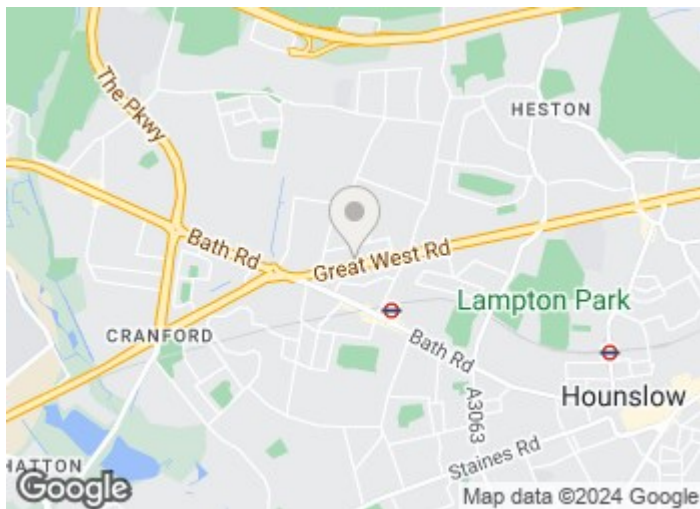
Offers In The Region Of £750,000

154 Great West Road

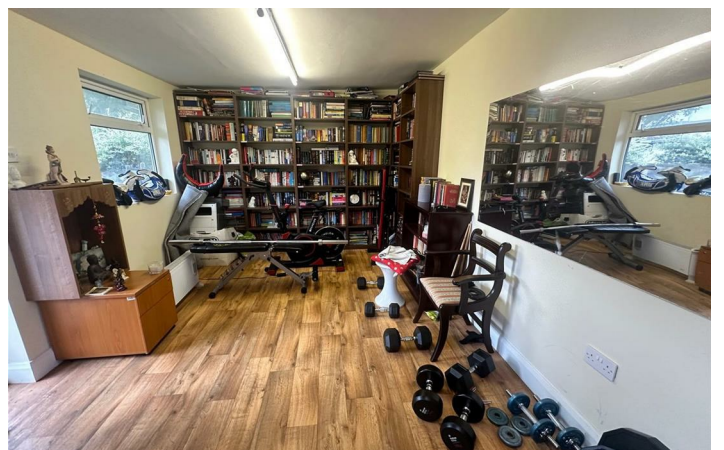
, Hounslow, TW5 9AP



- LARGER THAN AVERAGE SEMI DETACHED
- EXTENDED
- AMPLE OFF STREET PARKING
- SPACIOUS KITCHEN/ BREKAFAST ROOM
- FIVE BEDROOMS
- FAMILY BATHROOM PLUS TWO ADDITIONAL SHOWER ROOMS



[Directions](#)



Floor Plan

These particulars, whilst believed to be accurate are set out as a general outline only for guidance and do not constitute any part of an offer or contract. Intending purchasers should not rely on them as statements of representation of fact, but must satisfy themselves by inspection or otherwise as to their accuracy. No person in this firm's employment has the authority to make or give any representation or warranty in respect of the property.

1 The Crescent, Southall, Middlesex, UB1 1RE
Tel: 0208 571 0253 Email: info@parkfields-estates.com <https://www.parkfields-estates.com>

