



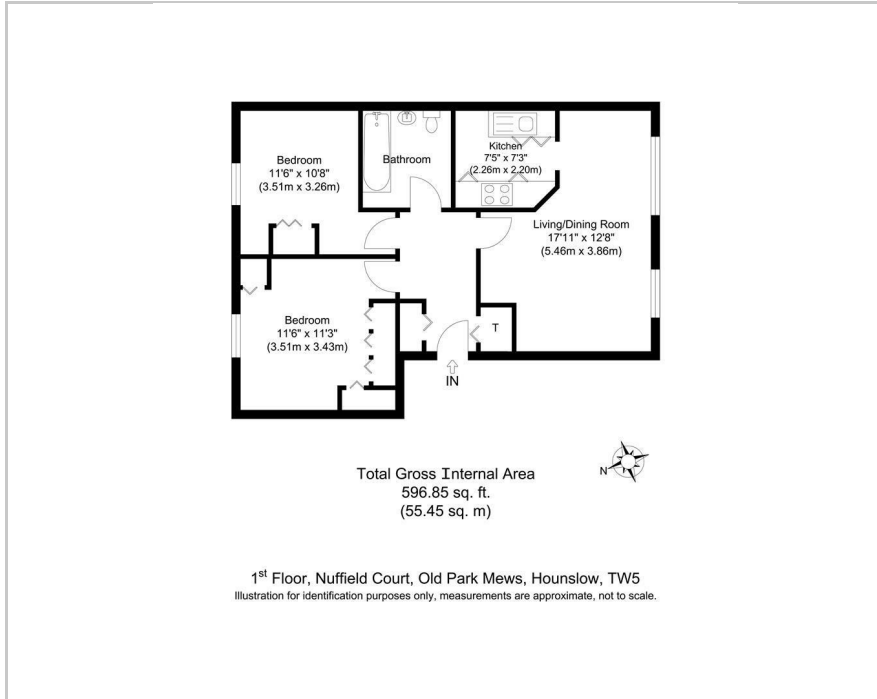
**Parkfields**  
Estates



Old Park Mews, Hounslow, TW5 0QX  
Offers In The Region Of £279,950



## Floor Plan



## Area Map



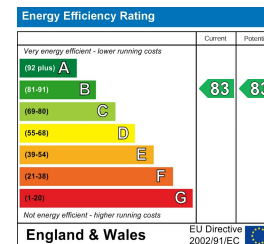
## Accommodation

- FIRST FLOOR MODERN APARTMENT
- TWO BEDROOMS
- KITCHEN
- LOUNGE
- BATHROOM/WC
- ONE ALLOCATED PARKING SPACE
- LONG 974 YEAR LEASE
- TENANT INSITU WITH £1,450.00 PCM GROSS RENTAL INCOME
- NO CHAIN

## Viewing

Please contact our Southall Office on 0208 571 0253 if you wish to arrange a viewing appointment for this property or require further information.

## Energy Efficiency Graph



These particulars, whilst believed to be accurate are set out as a general outline only for guidance and do not constitute any part of an offer or contract. Intending purchasers should not rely on them as statements of representation of fact, but must satisfy themselves by inspection or otherwise as to their accuracy. No person in this firm's employment has the authority to make or give any representation or warranty in respect of the property.