



**Parkfields**  
Estates



Walnut Tree Road, Hounslow, TW5 0LR

Asking Price £650,000



3



2



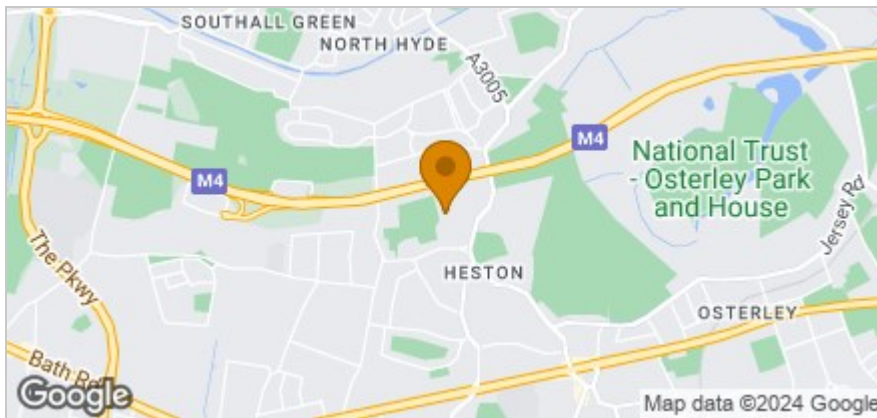
2



## Floor Plan



## Area Map



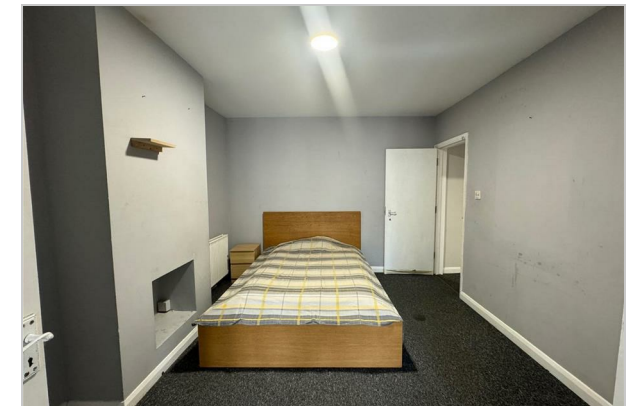
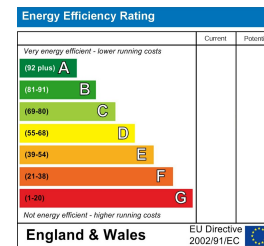
## Accommodation

- SPACIOUS SEMI DETACHED
- OFF STREET PARKING
- LONG REAR GARDEN
- BONUS OUTBUILDING
- PLENTY OF SCOPE TO EXTEND AND MODERNISE
- CUL DE SAC LOCATION
- CENTRAL HESTON
- NO ONWARD CHAIN

## Viewing

Please contact our Southall Office on 0208 571 0253 if you wish to arrange a viewing appointment for this property or require further information.

## Energy Efficiency Graph



These particulars, whilst believed to be accurate are set out as a general outline only for guidance and do not constitute any part of an offer or contract. Intending purchasers should not rely on them as statements of representation of fact, but must satisfy themselves by inspection or otherwise as to their accuracy. No person in this firm's employment has the authority to make or give any representation or warranty in respect of the property.