



Parkfields
Estates

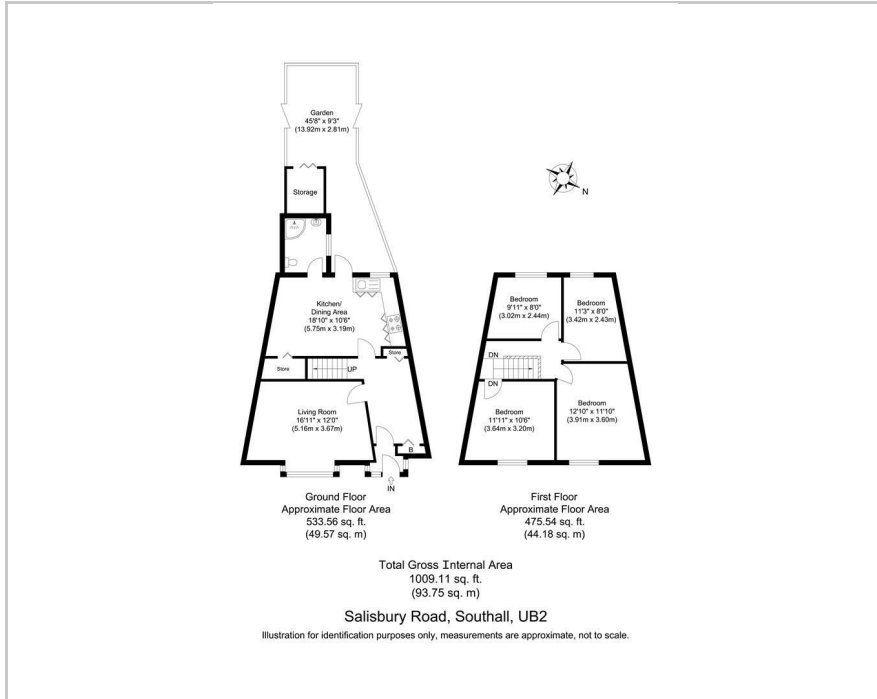


Salisbury Road, Southall, UB2 5QJ

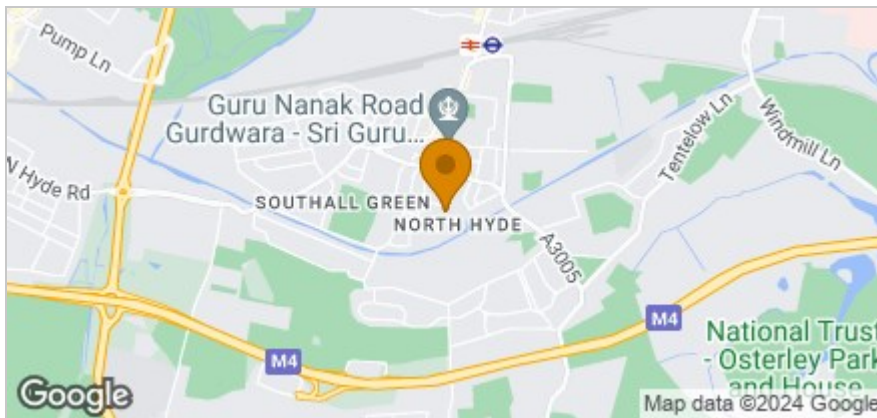
Asking Price £465,000



Floor Plan



Area Map



Accommodation

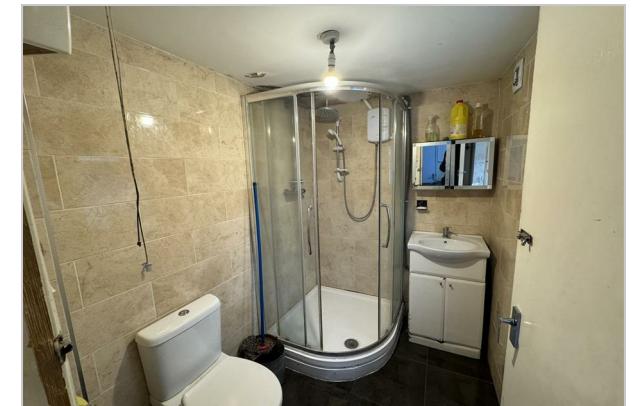
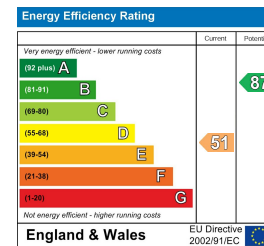
- INVESTMENT SALE - £2,200.00 PCM GROSS RENTAL INCOME
- JUST BY NORWOOD ROAD
- FOUR BEDROOMS
- BATHROOM/WC
- PRIVATE GARDEN
- NO CHAIN



Viewing

Please contact our Southall Office on 0208 571 0253 if you wish to arrange a viewing appointment for this property or require further information.

Energy Efficiency Graph



These particulars, whilst believed to be accurate are set out as a general outline only for guidance and do not constitute any part of an offer or contract. Intending purchasers should not rely on them as statements of representation of fact, but must satisfy themselves by inspection or otherwise as to their accuracy. No person in this firm's employment has the authority to make or give any representation or warranty in respect of the property.