



Parkfields

Estates

SHOW HOME

PRICES
PRIVATE LAND
THESE ARE NOT
OFFERS
PROPERTY IS AVAILABLE FOR VIEWING
PARTIAL CHANGE OF STOCK
020 8833 1111



3 Samara Drive, Southall, UB1 1FL

Asking Price £340,000



2



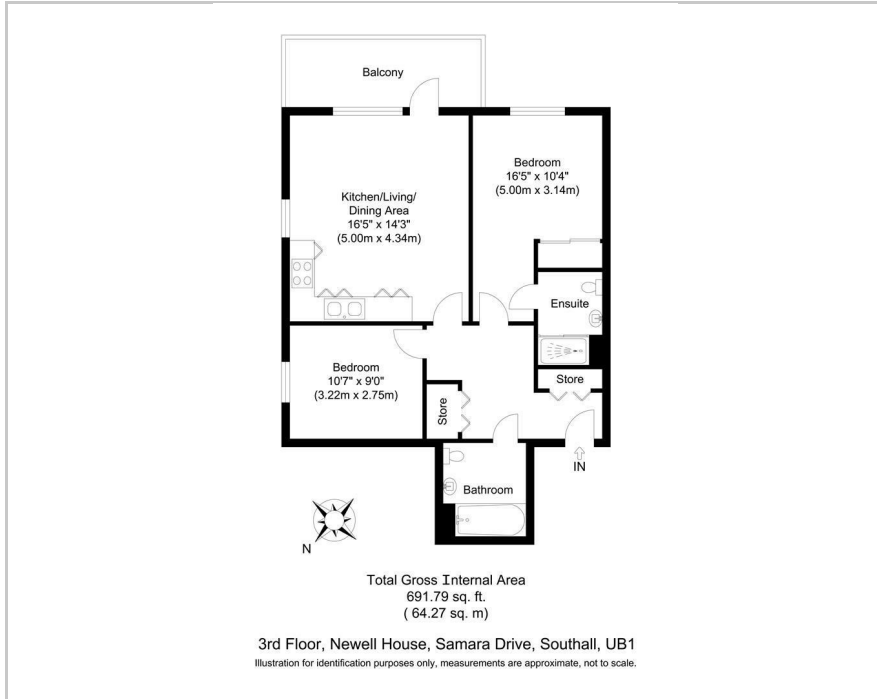
2



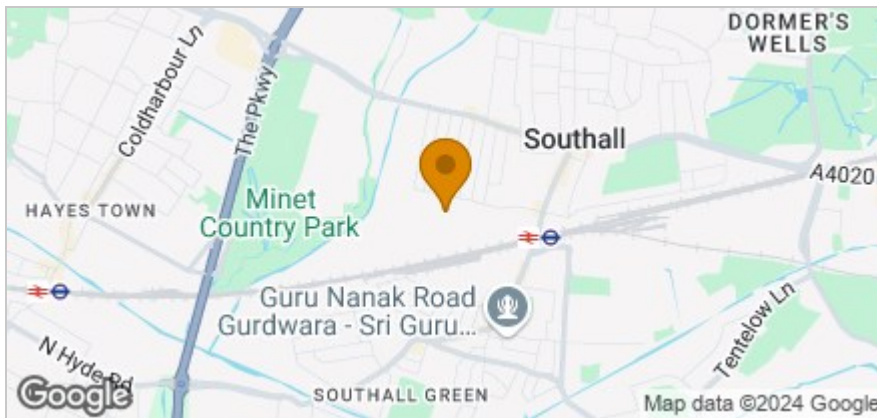
1



Floor Plan



Area Map



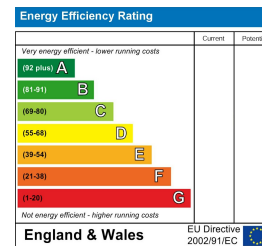
Accommodation

- THE GREEN QUARTER
- 243 YEAR LEASE
- LOVLEY APARTMENT BUILT RECENTLY
- GREAT VIEWS
- WALKING DISTANCE TO THE ELIZABETH LINE
- TWO BEDROOMS
- TWO BATHROOMS
- OPEN PLAN LOUNGE

Viewing

Please contact our Southall Office on 0208 571 0253 if you wish to arrange a viewing appointment for this property or require further information.

Energy Efficiency Graph



These particulars, whilst believed to be accurate are set out as a general outline only for guidance and do not constitute any part of an offer or contract. Intending purchasers should not rely on them as statements of representation of fact, but must satisfy themselves by inspection or otherwise as to their accuracy. No person in this firm's employment has the authority to make or give any representation or warranty in respect of the property.