

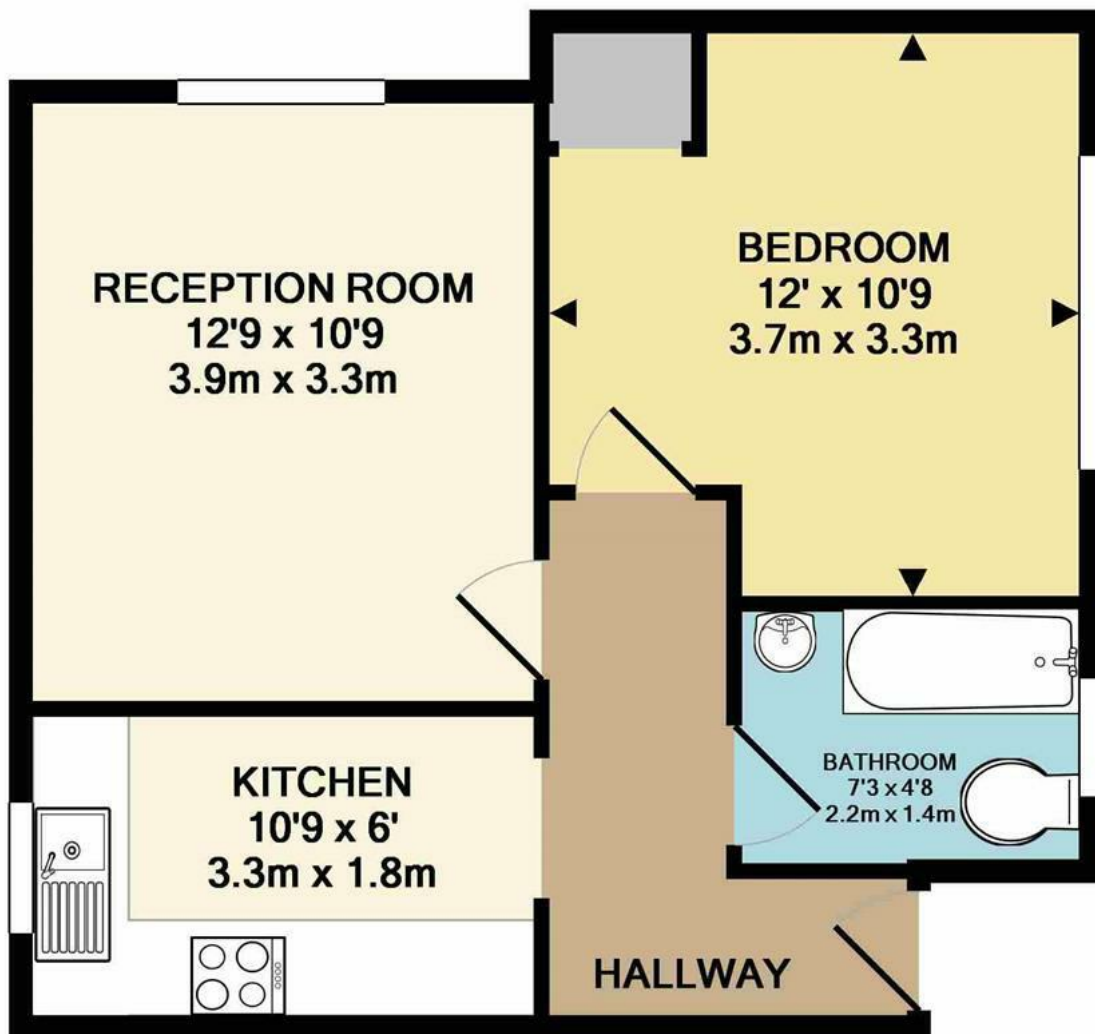


St. Georges Lodge,, London, N10 3TE

One bedroom flat set on the ground floor of this small private development with pleasant communal gardens. All rooms are a comfortable size with natural light. Located within a short walk of Muswell Hill Broadway and Crouch End and all local bus routes which stop at Alexandra Palace, Hornsey, Highgate and Finsbury Park stations, connecting to the City. Unfurnished. Available mid January. Haringey council tax band: C. Deposit: £1900. EPC: D

- 1 Bedroom
- 1 Reception
- 1 Bathroom
- Communal Garden
- Allocated Parking Available
- Sorry, No Pets Allowed

£1,650 PCM



ST GEORGES LODGE
TOTAL APPROX. FLOOR AREA 430 SQ.FT. (40.0 SQ.M.)
 Measurements are approximate. Not to scale. Illustrative purposes only
 Made with Metropix ©2019

