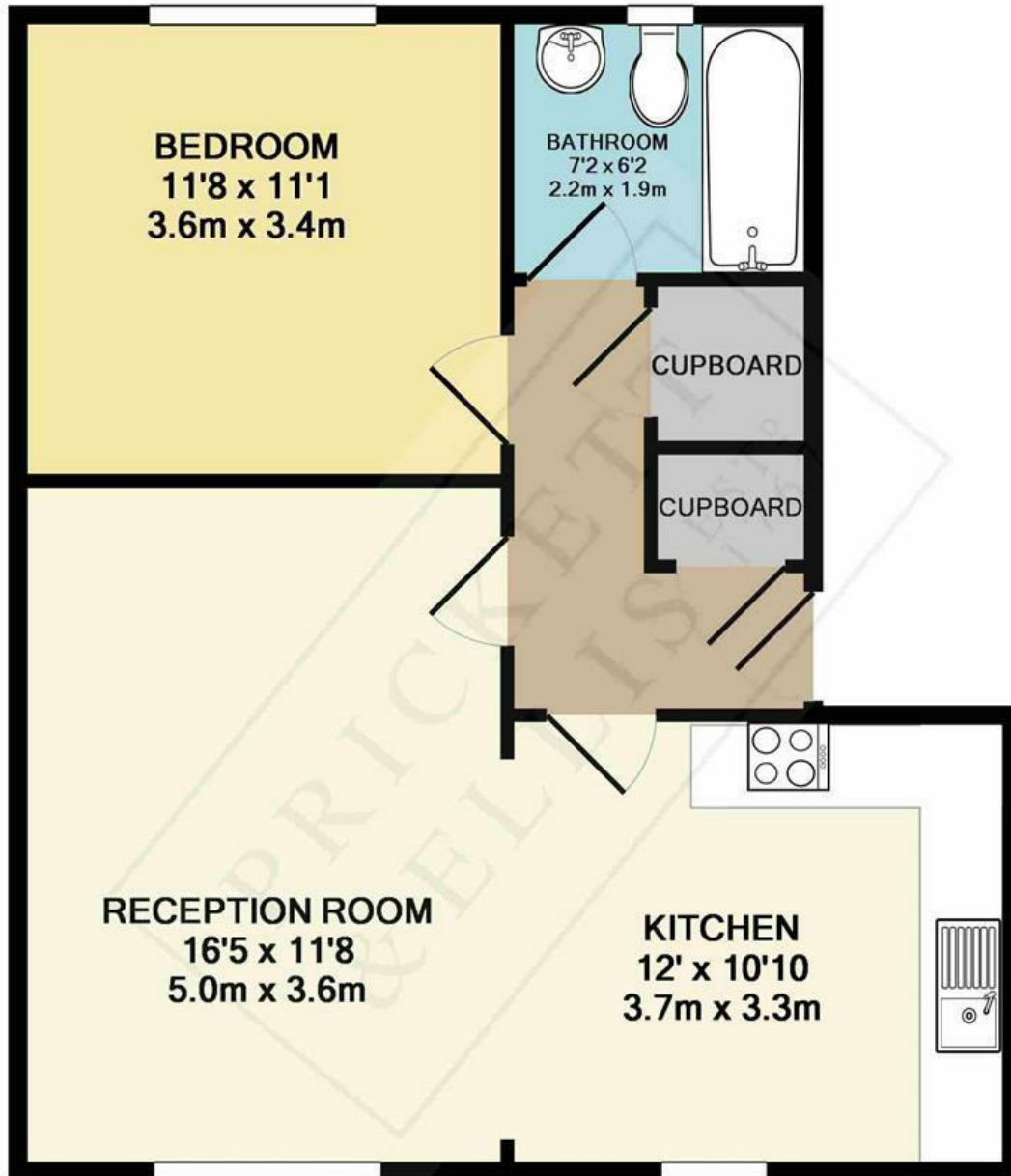




Mermaid Court, Railway, London, N4 1RG

This spacious one-bed flat is situated at the top floor, and is conveniently located a stones throw from Haringay Station which offers great links to central London. The bedroom is a sizeable double room while the combined kitchen/living area provides a great space, with large windows creating a light and bright feel and offers stunning views of North London. The block is very well maintained and the property comes with a parking space situated behind secured gates. Available to let in September. EPC C * Haringey Council Tax B * Deposit - £2,019

£1,750 PCM



MERMAID COURT
TOTAL APPROX. FLOOR AREA 572 SQ.FT. (53.2 SQ.M.)
 Measurements are approximate. Not to scale. Illustrative purposes only
 Made with Metropix ©2014

Energy Efficiency Rating		Current	Potential
Very energy efficient - lower running costs			
(92 plus) A			
(81-91) B			
(69-80) C			
(55-68) D			
(39-54) E			
(21-38) F			
(1-20) G			
Not energy efficient - higher running costs			
England & Wales		EU Directive 2002/91/EC	

Environmental Impact (CO ₂) Rating		Current	Potential
Very environmentally friendly - lower CO ₂ emissions			
(92 plus) A			
(81-91) B			
(69-80) C			
(55-68) D			
(39-54) E			
(21-38) F			
(1-20) G			
Not environmentally friendly - higher CO ₂ emissions			
England & Wales		EU Directive 2002/91/EC	