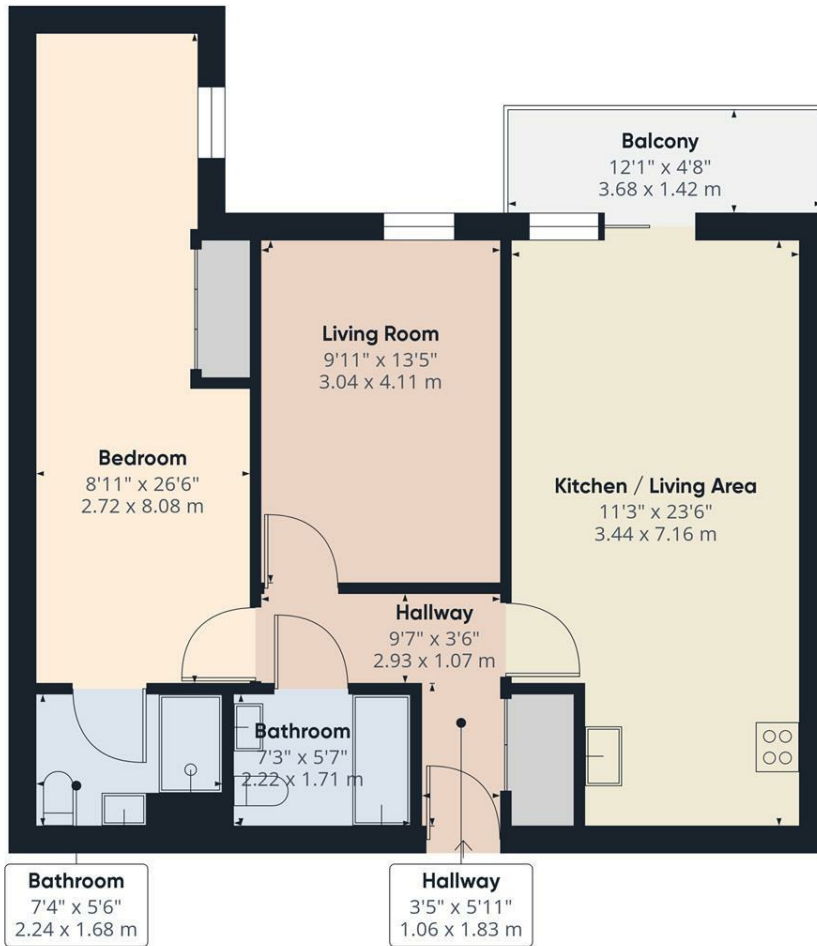




Chadwell Lane, London, N8 7RF

*** SHORT TERM LET *** This second floor property is located in the prestigious development of New River Village, that's perfect for commuters, conveniently situated near Hornsey Main Line Station with services to Moorgate and Kings Cross. The property features two double bedrooms (one with an en suite shower room), an impressive main bathroom, a spacious reception room with a generous kitchen area at the rear. This 2-bedroom apartment also offers a great sized balcony with expansive views of the local area. Residents have exclusive access to a private health club and concierge service. Available on a SHORT-TERM LET from the 24th of August to the 8th of January 2025. EPC C * HARINGEY COUNCIL TAX D * DEPOSIT - £3,230

£2,800 PCM



Approximate total area⁽¹⁾
754.9 ft²
70.13 m²

(1) Excluding balconies and terraces

While every attempt has been made to ensure accuracy, all measurements are approximate, not to scale. This floor plan is for illustrative purposes only.

GIRAFFE 360

