



Asking Price Of

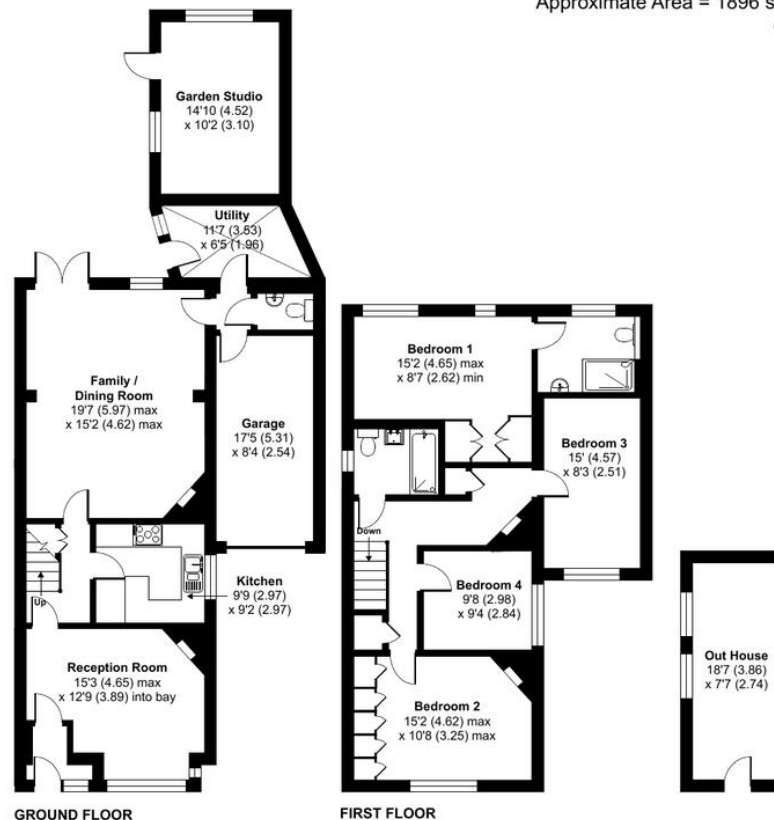
**£749,995**

## White House Lane | Guildford

**Freehold**

Located in the highly desirable White House Lane this stunning four bedroom Detached house with features including a larger than average garden, summer room, garage and off road parking.

The two reception rooms provide ample space for entertaining guests or creating cozy family moments. With the seamless flow of the layout ensures that every room enjoys an abundance of natural light, creating an inviting and warm atmosphere throughout.



## White House Lane, Guildford, GU4

Approximate Area = 1896 sq ft / 176.1 sq m (includes garage)

Out House = 143 sq ft / 13.3 sq m

Total = 2039 sq ft / 189.4 sq m

For identification only - Not to scale



Floor plan produced in accordance with RICS Property Measurement Standards incorporating International Property Measurement Standards (IPMS2 Residential). © nitchecom 2024. Produced for Cobbles Property Ltd. REF: 1090053

Score	Energy rating	Current	Potential
92+	A		
81-91	B		
69-80	C		76 C
55-68	D	66 D	
39-54	E		
21-38	F		
1-20	G		

- Four Bedroom Detached House
- Off Road Parking
- Council Tax Band - E
- Large Private Garden
- Garage
- EPC Rating - D