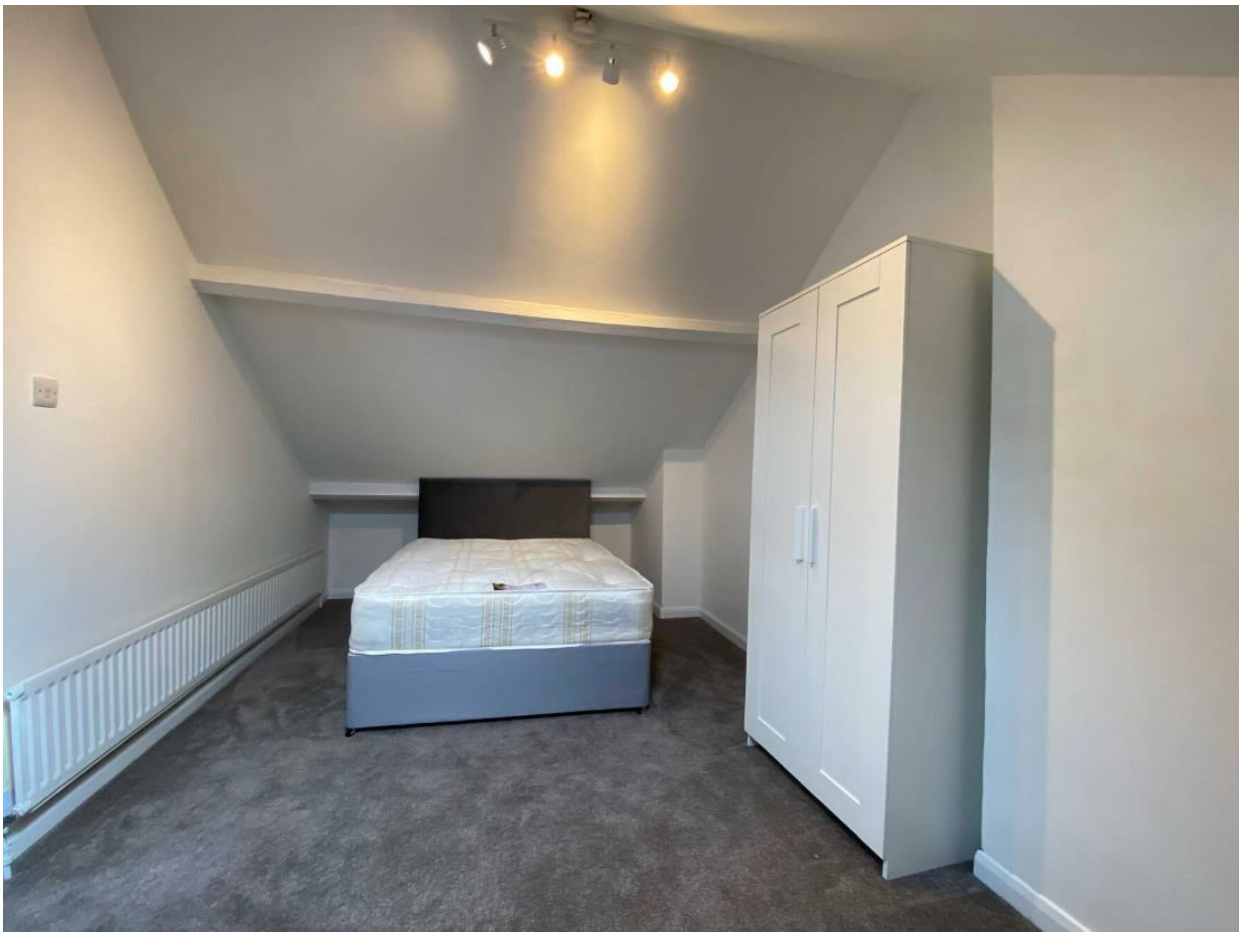


St. Marys Square, London, W5 4QX

£925

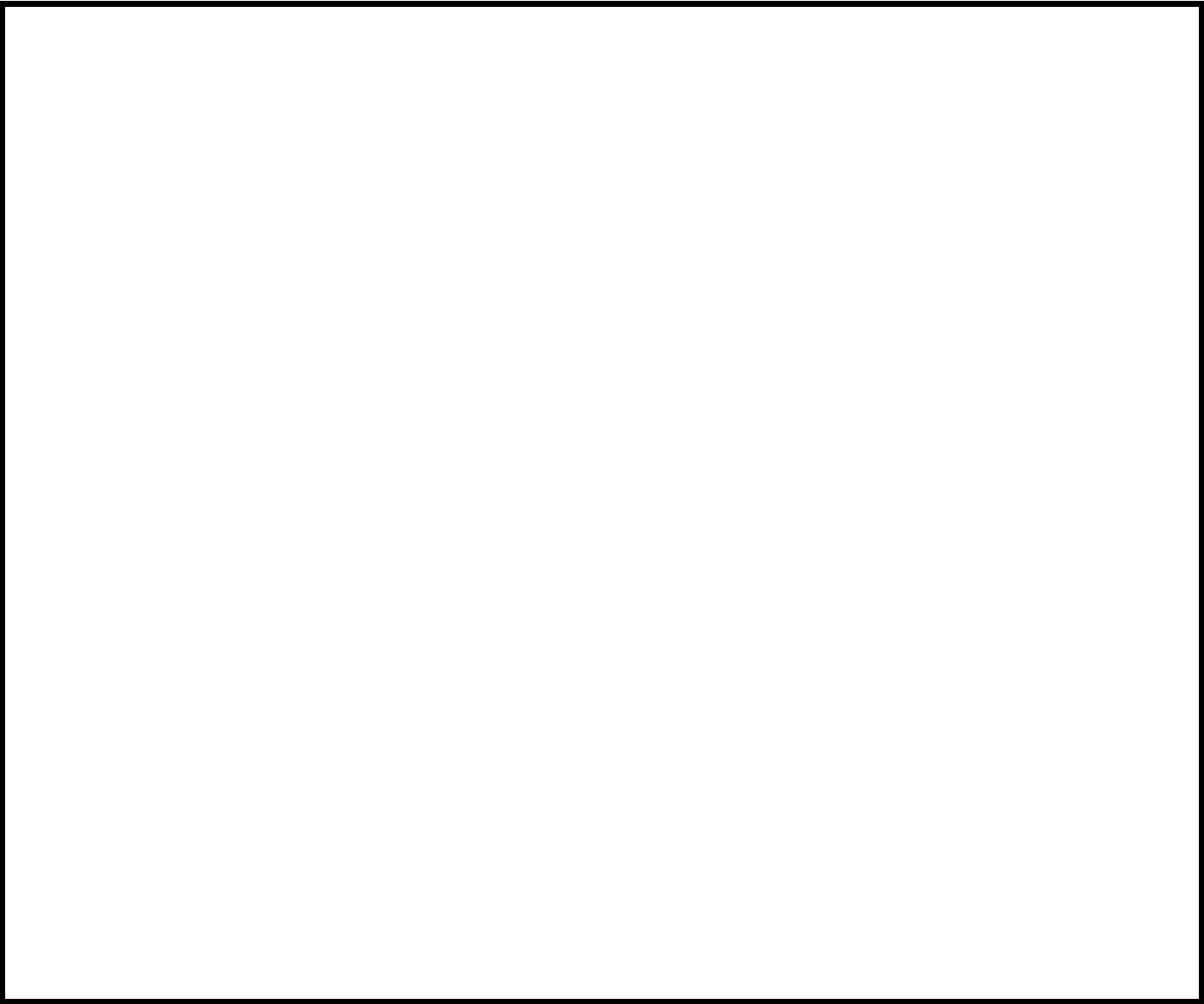



KEY FEATURES:


- \* Large Double Room
- \* All bills included 10% of the price
- \* Available now
- \* £150 for Council Tax per year

- \* Large Double Room
- \* All bills included 10% of the price
- \* Available now
- \* £150 for Council Tax per year

St. Marys Square is a vibrant area, offering a delightful mix of local amenities, parks, and excellent transport links, making it easy to explore all that London has to offer.



Energy Efficiency Rating		
	Current	Potential
Very energy efficient - lower running costs		
(92 plus) A		
(81-91) B		
(69-80) C		
(55-68) D		
(39-54) E	53	
(21-38) F		
(1-20) G		
Not energy efficient - higher running costs		
England & Wales		EU Directive 2002/91/EC 

Environmental Impact (CO <sub>2</sub> ) Rating		
	Current	Potential
Very environmentally friendly - lower CO <sub>2</sub> emissions		
(92 plus) A		
(81-91) B		
(69-80) C		
(55-68) D		
(39-54) E		
(21-38) F		
(1-20) G		
Not environmentally friendly - higher CO <sub>2</sub> emissions		
England & Wales		EU Directive 2002/91/EC 

Whilst every effort is made to give a fair description, the accuracy of these particulars is not guaranteed, neither do they constitute an offer or contract.

**CHURCHILL & MATHESONS ESTATE AGENTS** have not tested any apparatus, equipment, fitting or services and so cannot verify that they are in working order. The buyer is advised to obtain verification from their solicitor or surveyor. Measurements are correct to within +/-6 A sonic tape is used. None of the statements contained in these particulars or any of our properties are to be relied upon as a representation of fact.