



18 Old Oak Common Lane
Acton
London
W3 7EL
T 020 8749 9798
E sales@churchillmathesons.com
www.churchillmathesons.com

Churchill & Mathesons

Perry Avenue, North Acton, London W3 6YQ

£415 Per Week



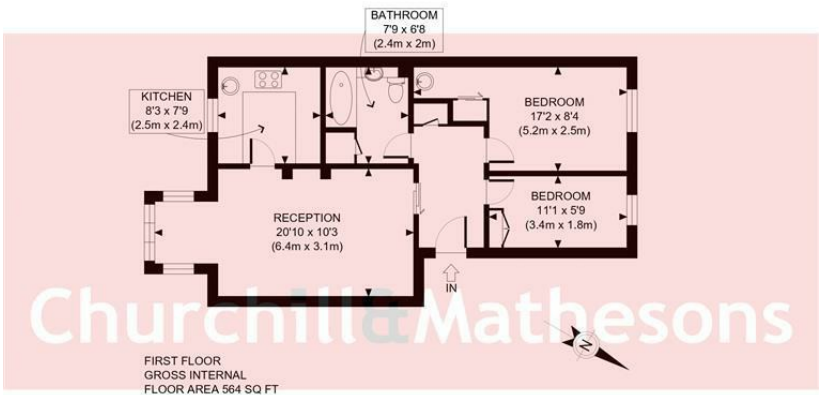
KEY FEATURES:

- Spacious 2 bedroom flat in purpose built block
- Separate fully fitted kitchen
- Spacious reception room
- FURNISHED ~ AVAILABLE 18th of February ~ EPC Rating D
- Ealing Council, Council Tax Band D

Bright and spacious 2 bedroom flat flat in purpose built block (Zone 2, Central Line)

- * 1 Double and 1 large single sized bedrooms
- * Spacious reception room
- * Separate fully fitted kitchen
- * Fully-tiled bathroom suite

This property has benefits from an complete refurbishment, all work has been done to a high standard and is only a 5 minute walk from East Acton.
FURNISHED ~ AVAILABLE 18th of February ~ EPC Rating D
Ealing Council, Council Tax Band D



APPROX. GROSS INTERNAL FLOOR AREA: 564 SQ FT/ 52 SQM

This plan is for illustrative purposes only and should be used as such by any prospective client. Whilst every attempt has been made to ensure the accuracy of the Floor Plan contained here, measurements of the doors, windows, rooms and any other items are approximate and no responsibility is taken for any errors, omissions, or misstatement. The services, systems and appliances shown have not been tested and no guarantee as to the operability or efficiency can be given.

PROPERTY PHOTO PLANS

Energy Efficiency Rating

	Current	Potential
Very energy efficient - lower running costs		
(92 plus) A		
(81-91) B		
(69-80) C		
(55-68) D		
(39-54) E		
(21-38) F		
(1-20) G		
Not energy efficient - higher running costs		
England & Wales	EU Directive 2002/91/EC	

Environmental Impact (CO₂) Rating

	Current	Potential
Very environmentally friendly - lower CO ₂ emissions		
(92 plus) A		
(81-91) B		
(69-80) C		
(55-68) D		
(39-54) E		
(21-38) F		
(1-20) G		
Not environmentally friendly - higher CO ₂ emissions		
England & Wales	EU Directive 2002/91/EC	



Whilst every effort is made to give a fair description, the accuracy of these particulars is not guaranteed, neither do they constitute an offer or contract.

CHURCHILL & MATHESONS ESTATE AGENTS have not tested any apparatus, equipment, fitting or services and so cannot verify that they are in working order. The buyer is advised to obtain verification from their solicitor or surveyor. Measurements are correct to within +/-6 A sonic tape is used. None of the statements contained in these particulars or any of our properties are to be relied upon as a representation of fact.