



18 Old Oak Common Lane  
Acton  
London  
W3 7EL  
T 020 8749 9798  
E sales@churchillmathesons.com  
www.churchillmathesons.com

Churchill & Mathesons

Holley Road, London, W3 7TS

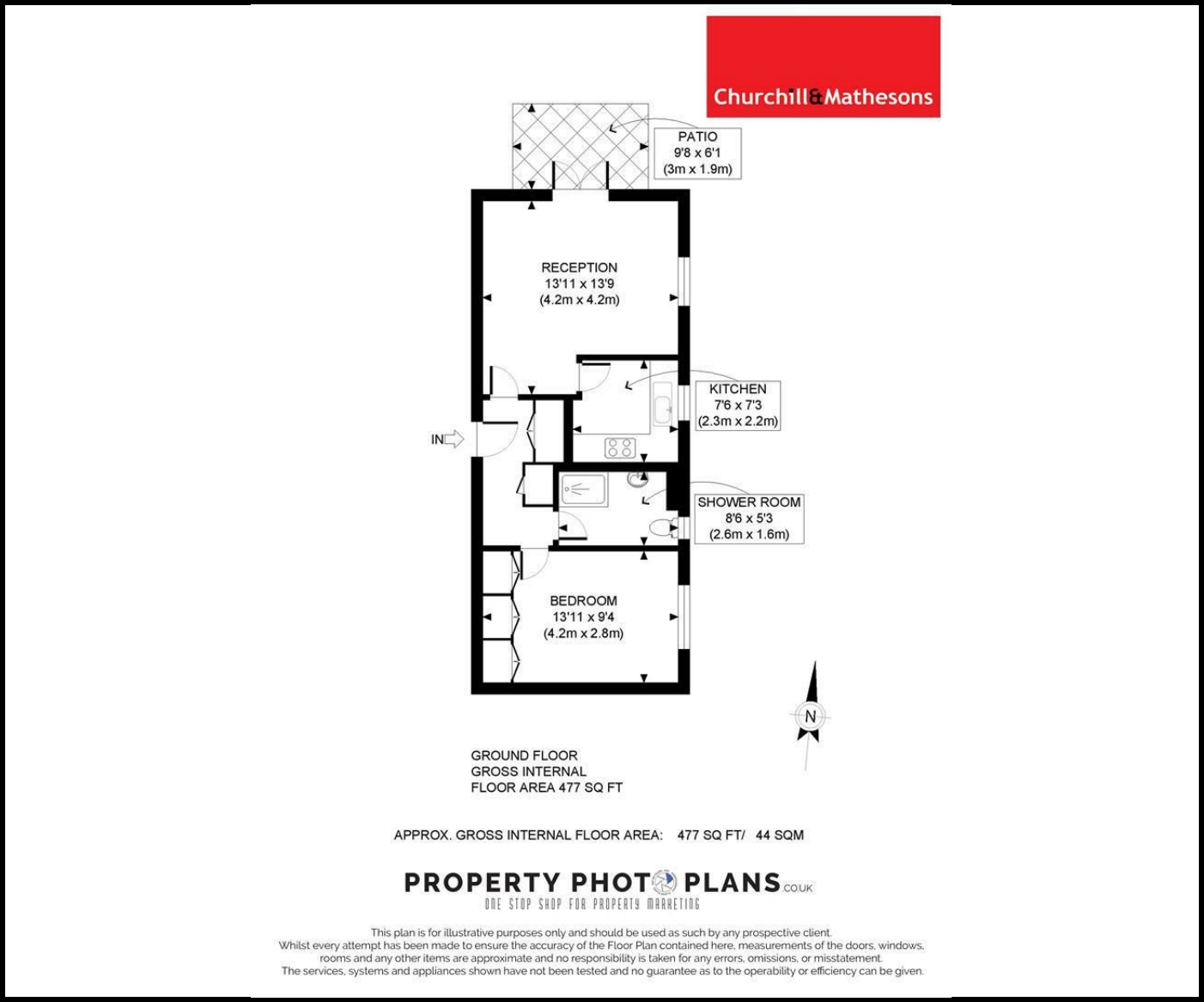
£346 Per Week



KEY FEATURES:

- Modern 1 bedroom flat in Zone 2
- Modern fully fitted kitchen with integrated appliances
- Parking
- Located moments from Acton Central and Turnham Green tube station
- FURNISHED ~ AVAILABLE 25th of JUNE ~ EPC Rating C

Modern 1 bedroom flat in Zone 2  
\* Generous sized bedroom  
\* Large and separate reception room with an access to the patio and the communal garden  
\* Modern fully fitted kitchen with integrated appliances  
\* Modern tiled bathroom  
\* Lots of storage space and in excellent condition throughout  
\* Located moments from Acton Central and Turnham Green tube station, excellent bus routes and all other amenities  
\*Parking  
Close to Shepherds Bush and Westfield Shopping Center  
FURNISHED ~ AVAILABLE 25th of JUNE ~  
EPC Rating C  
Council Tax - Hammersmith and Fulham - Band C



Energy Efficiency Rating		
	Current	Potential
Very energy efficient - lower running costs		
(92 plus) A		
(81-91) B		
(69-80) C		
(55-68) D		
(39-54) E		
(21-38) F		
(1-20) G		
Not energy efficient - higher running costs		
	67	73
England & Wales	EU Directive 2002/91/EC	

Environmental Impact (CO <sub>2</sub> ) Rating		
	Current	Potential
Very environmentally friendly - lower CO <sub>2</sub> emissions		
(92 plus) A		
(81-91) B		
(69-80) C		
(55-68) D		
(39-54) E		
(21-38) F		
(1-20) G		
Not environmentally friendly - higher CO <sub>2</sub> emissions		
	67	73
England & Wales	EU Directive 2002/91/EC	

Whilst every effort is made to give a fair description, the accuracy of these particulars is not guaranteed, neither do they constitute an offer or contract.

**CHURCHILL & MATHESONS ESTATE AGENTS** have not tested any apparatus, equipment, fitting or services and so cannot verify that they are in working order. The buyer is advised to obtain verification from their solicitor or surveyor. Measurements are correct to within +/- 6 A sonic tape is used. None of the statements contained in these particulars or any of our properties are to be relied upon as a representation of fact.