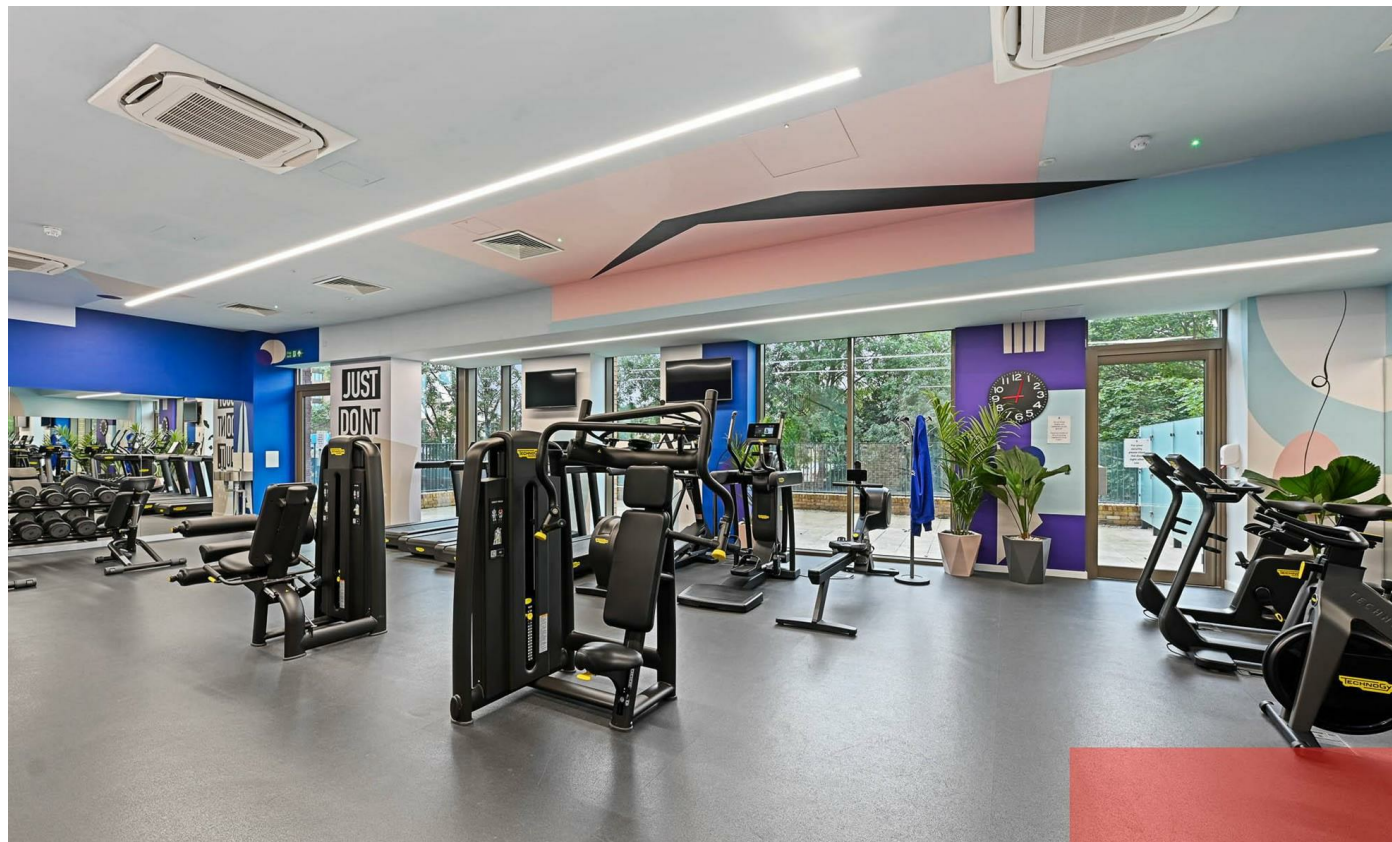




Bakery Walk, Greenford, UB6 0GL

£542 Per Week



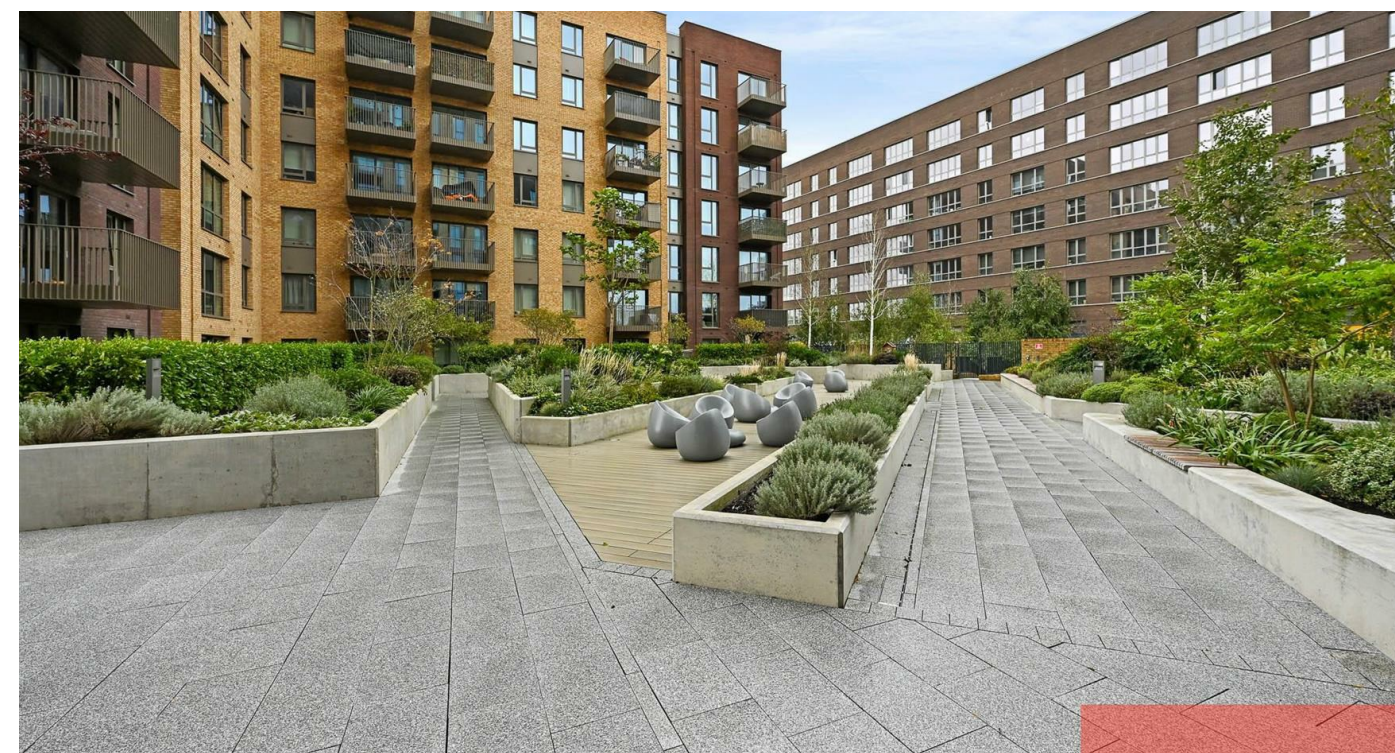
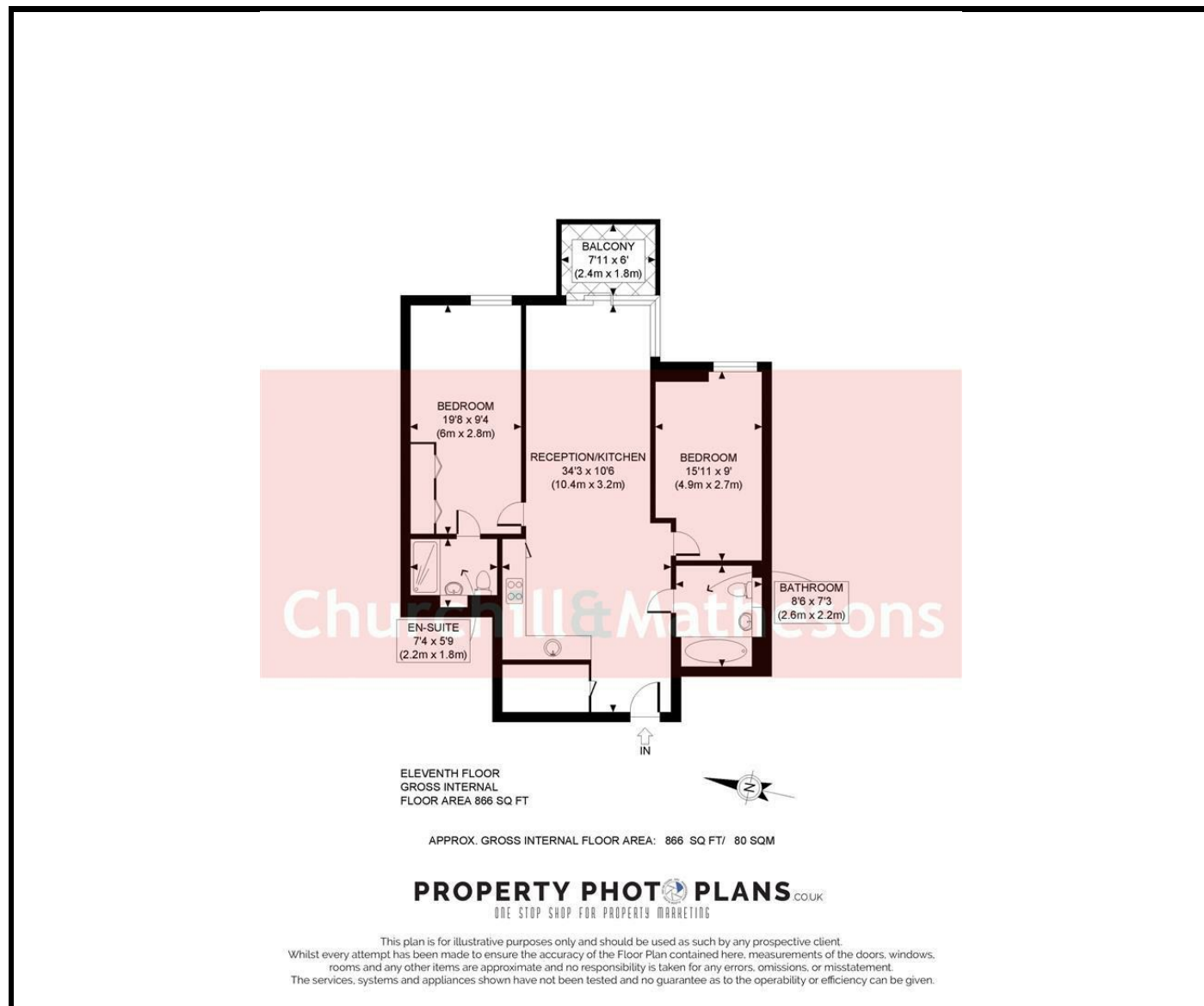
KEY FEATURES:

- 2 bedrooms, 2 bathrooms, and 1 reception room
- A spacious interior spanning 947 sq ft
- Convenient location and modern amenities
- Available now

Welcome to Bakery Walk, Greenford - a charming location for this stunning flat that boasts 2 bedrooms, 2 bathrooms, and 1 reception room. This new build property, constructed in 2021, offers a modern living space with a touch of elegance.

A spacious interior spanning 947 sq ft, perfect for those looking for a comfortable yet stylish home. The wooden floors add a touch of warmth and sophistication to the space, creating a cosy atmosphere throughout.

Located in the heart of Greenford, this flat offers not just a home, but a lifestyle. With its convenient location and modern amenities, this property is perfect for individuals or small families looking to settle in a vibrant and welcoming community.



Energy Efficiency Rating

	Current	Potential
Very energy efficient - lower running costs		
(92 plus) A		
(81-91) B		
(69-80) C		
(55-68) D		
(39-54) E		
(21-38) F		
(1-20) G		
Not energy efficient - higher running costs		

England & Wales EU Directive 2002/91/EC

Environmental Impact (CO₂) Rating

	Current	Potential
Very environmentally friendly - lower CO ₂ emissions		
(92 plus) A		
(81-91) B		
(69-80) C		
(55-68) D		
(39-54) E		
(21-38) F		
(1-20) G		
Not environmentally friendly - higher CO ₂ emissions		

England & Wales EU Directive 2002/91/EC

Whilst every effort is made to give a fair description, the accuracy of these particulars is not guaranteed, neither do they constitute an offer or contract.

CHURCHILL & MATHESONS ESTATE AGENTS have not tested any apparatus, equipment, fitting or services and so cannot verify that they are in working order. The buyer is advised to obtain verification from their solicitor or surveyor. Measurements are correct to within +/-6 A sonic tape is used. None of the statements contained in these particulars or any of our properties are to be relied upon as a representation of fact.