



Westway, London, W12 0SB

Asking Price £599,500 Freehold



**KEY FEATURES:**

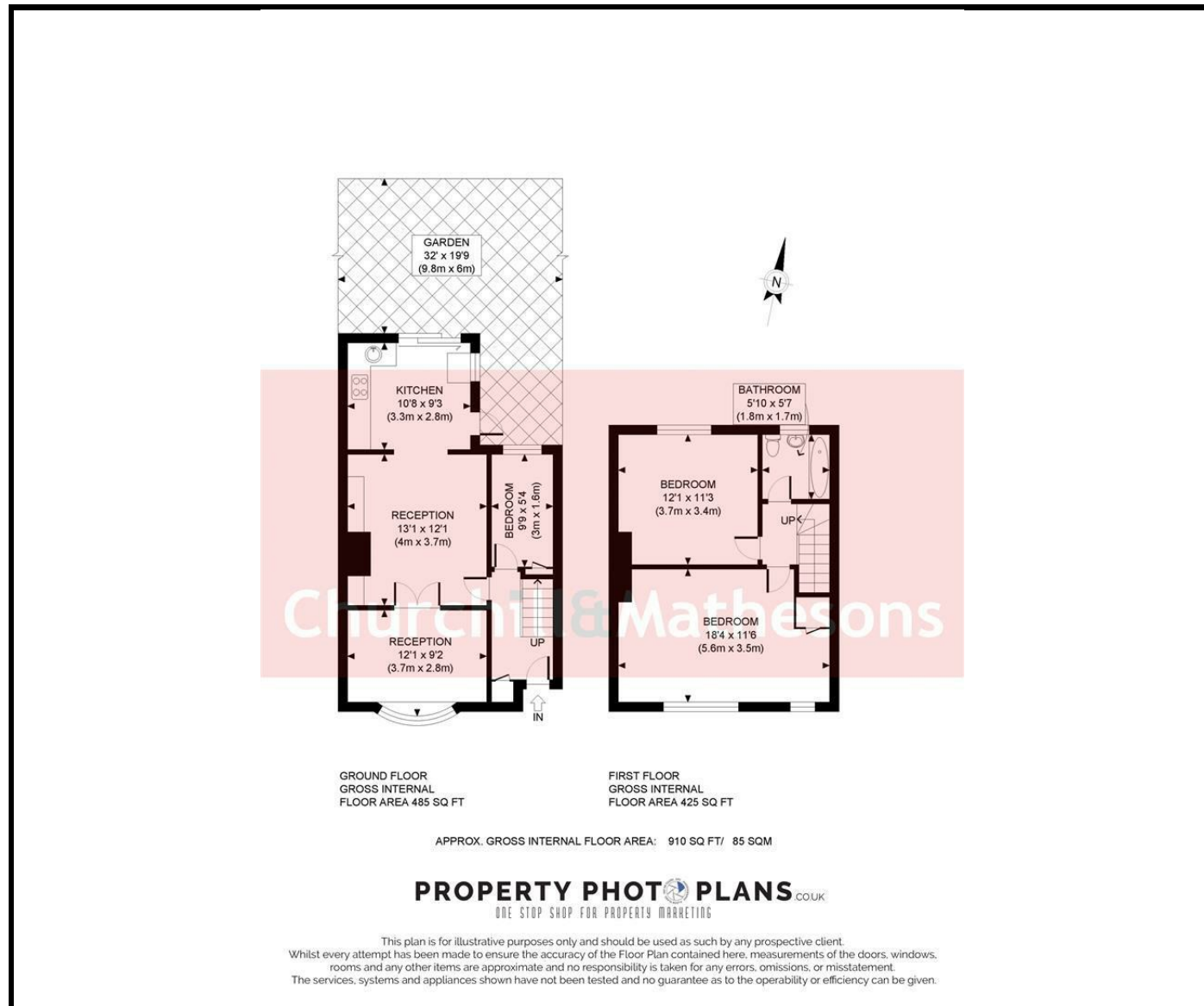
- 2/3 BEDROOM TERRACE HOUSE
- 1 X RECEPTION
- PRIVATE GARDEN
- FULLY APPOINTED KITCHEN
- GREAT LOCATION
- CHAIN FREE

**THREE BED TERRACE HOUSE FOR SALE**

Welcome to this 910sqft terraced house with wooden floors located in the sought-after area of W12. This delightful home boasts a reception room and separate dining room or 3rd bedroom perfect for guests or entertaining. Upstairs has 2 double bedrooms and a family bathroom. The private rear garden is accessible through sliders in the kitchen providing great outdoor entertainment options.

Don't miss the opportunity to make this lovely house your new home in this desirable location.





**Energy Efficiency Rating**

|   | Current                 | Potential |
|---|-------------------------|-----------|
| Very energy efficient - lower running costs |                         |           |
| (92 plus) <b>A</b>                          |                         |           |
| (81-91) <b>B</b>                            |                         | <b>85</b> |
| (69-80) <b>C</b>                            | <b>67</b>               |           |
| (55-68) <b>D</b>                            |                         |           |
| (39-54) <b>E</b>                            |                         |           |
| (21-38) <b>F</b>                            |                         |           |
| (1-20) <b>G</b>                             |                         |           |
| Not energy efficient - higher running costs |                         |           |
| <b>England &amp; Wales</b>                  | EU Directive 2002/91/EC |           |

**Environmental Impact (CO<sub>2</sub>) Rating**

|   | Current                 | Potential |
|---|-------------------------|-----------|
| Very environmentally friendly - lower CO <sub>2</sub> emissions |                         |           |
| (92 plus) <b>A</b>  |                         |           |
| (81-91) <b>B</b>  |                         |           |
| (69-80) <b>C</b>  |                         |           |
| (55-68) <b>D</b>  |                         |           |
| (39-54) <b>E</b>  |                         |           |
| (21-38) <b>F</b>  |                         |           |
| (1-20) <b>G</b>   |                         |           |
| Not environmentally friendly - higher CO <sub>2</sub> emissions |                         |           |
| <b>England &amp; Wales</b>                                      | EU Directive 2002/91/EC |           |

Whilst every effort is made to give a fair description, the accuracy of these particulars is not guaranteed, neither do they constitute an offer or contract.

**CHURCHILL & MATHESONS ESTATE AGENTS** have not tested any apparatus, equipment, fitting or services and so cannot verify that they are in working order. The buyer is advised to obtain verification from their solicitor or surveyor. Measurements are correct to within +/- 6 A sonic tape is used. None of the statements contained in these particulars or any of our properties are to be relied upon as a representation of fact.