



18 Old Oak Common Lane  
Acton  
London  
W3 7EL  
T 020 8749 9798  
E sales@churchillmathesons.com  
www.churchillmathesons.com

**Churchill & Mathesons**

Vespan Road, London, W12 9QG

£923 Per Week



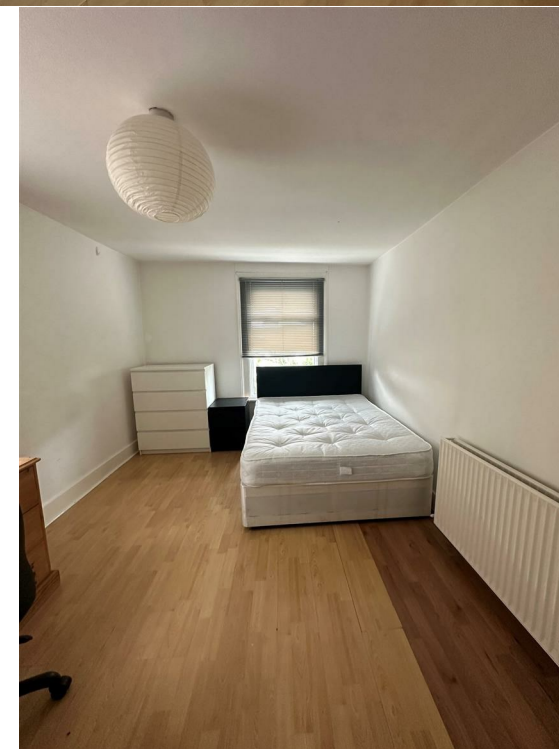
**KEY FEATURES:**

- A four bedroom terraced house
- Spacious 1,216 sq ft of living space
- Outside garden space
- Available now!

Charming terraced house located on Vespan Road in the heart of London. This delightful property boasts a spacious 1,216 sq ft of living space, perfect for a growing family or those who love to entertain.

Situated in the vibrant area of Shepherds Bush, this property offers the best of city living with a touch of tranquillity. The garden provides a peaceful retreat where you can enjoy a cup of tea or host a summer barbecue with friends and family.

Don't miss the opportunity to make this 4-bedroom house your new home. Contact us today to arrange a viewing and experience the charm of Vespan Road for yourself.



### Energy Efficiency Rating

	Current	Potential
Very energy efficient - lower running costs		
(92 plus) <b>A</b>		
(81-91) <b>B</b>		
(69-80) <b>C</b>		
(55-68) <b>D</b>	60	
(39-54) <b>E</b>		
(21-38) <b>F</b>		
(1-20) <b>G</b>		
Not energy efficient - higher running costs		

**England & Wales** EU Directive 2002/91/EC 

### Environmental Impact (CO<sub>2</sub>) Rating

	Current	Potential
Very environmentally friendly - lower CO <sub>2</sub> emissions		
(92 plus) <b>A</b>		
(81-91) <b>B</b>		
(69-80) <b>C</b>		
(55-68) <b>D</b>		
(39-54) <b>E</b>		
(21-38) <b>F</b>		
(1-20) <b>G</b>		
Not environmentally friendly - higher CO <sub>2</sub> emissions		

**England & Wales** EU Directive 2002/91/EC 

Whilst every effort is made to give a fair description, the accuracy of these particulars is not guaranteed, neither do they constitute an offer or contract.

**CHURCHILL & MATHESONS ESTATE AGENTS** have not tested any apparatus, equipment, fitting or services and so cannot verify that they are in working order. The buyer is advised to obtain verification from their solicitor or surveyor. Measurements are correct to within +/- 6 A sonic tape is used. None of the statements contained in these particulars or any of our properties are to be relied upon as a representation of fact.