



Primula Street, London, W12 0RF

Offers In Excess Of £600,000 Freehold



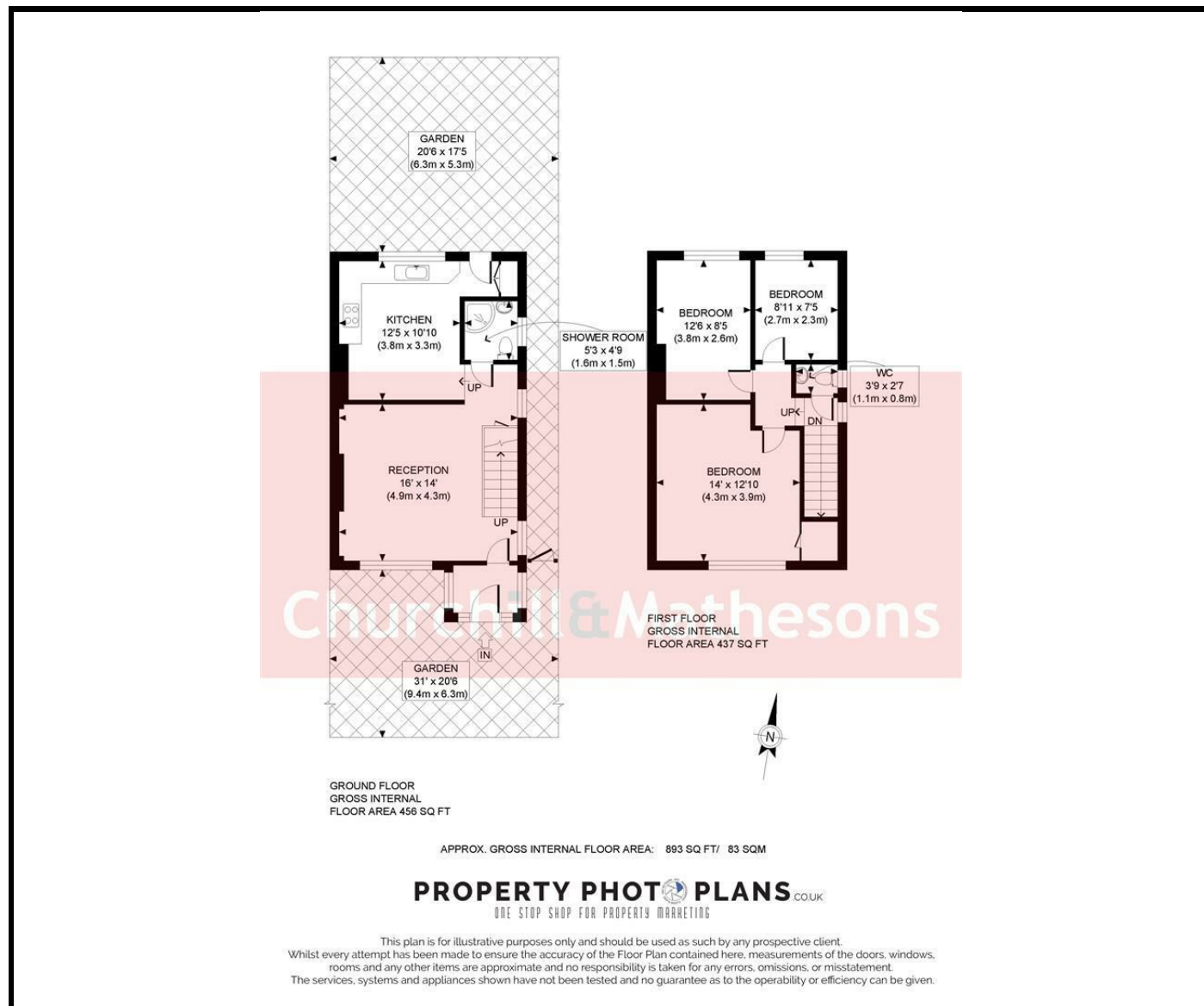
KEY FEATURES:

- NO CHAIN
- FREEHOLD
- WOODEN FLOORS
- MODERN TILES
- CLOSE TO EAST ACTON STATION
- FRONT AND BACK GARDEN
- END TERRACE
- OFF STREET PARKING OPTION

FREEHOLD END TERRACE HOME FOR SALE W12

Churchill & Mathesons are proud present this beautiful end terrace home with great outdoor space and side access to the rear garden. The home boasts modern tiles, solid wooden floors and is well decorated. Ground floor consists of a tiled south facing living room, shower room, toilet and separate kitchen leading out to a patio garden. First floor consists of 3 bedrooms the main is south facing with and has a separate toilet at the top of the landing. The south facing large front garden can be used for off street parking (Permission may be required)

Located: 0.4miles from East Acton Station, easy access onto the A40, close to all amenities, shops restaurants, great schools, parks etc. A must to see this will sell soon.



Energy Efficiency Rating

	Current	Potential
Very energy efficient - lower running costs		
(92 plus) A		
(81-91) B		
(69-80) C		
(55-68) D		
(39-54) E		
(21-38) F		
(1-20) G		
Not energy efficient - higher running costs		
	53	85

England & Wales EU Directive 2002/91/EC

Environmental Impact (CO₂) Rating

	Current	Potential
Very environmentally friendly - lower CO ₂ emissions		
(92 plus) A		
(81-91) B		
(69-80) C		
(55-68) D		
(39-54) E		
(21-38) F		
(1-20) G		
Not environmentally friendly - higher CO ₂ emissions		

England & Wales EU Directive 2002/91/EC

Whilst every effort is made to give a fair description, the accuracy of these particulars is not guaranteed, neither do they constitute an offer or contract.

CHURCHILL & MATHESONS ESTATE AGENTS have not tested any apparatus, equipment, fitting or services and so cannot verify that they are in working order. The buyer is advised to obtain verification from their solicitor or surveyor. Measurements are correct to within +/- 6 A sonic tape is used. None of the statements contained in these particulars or any of our properties are to be relied upon as a representation of fact.