



Oak Way, London, W3 7LD

Asking Price £500,000 Leasehold



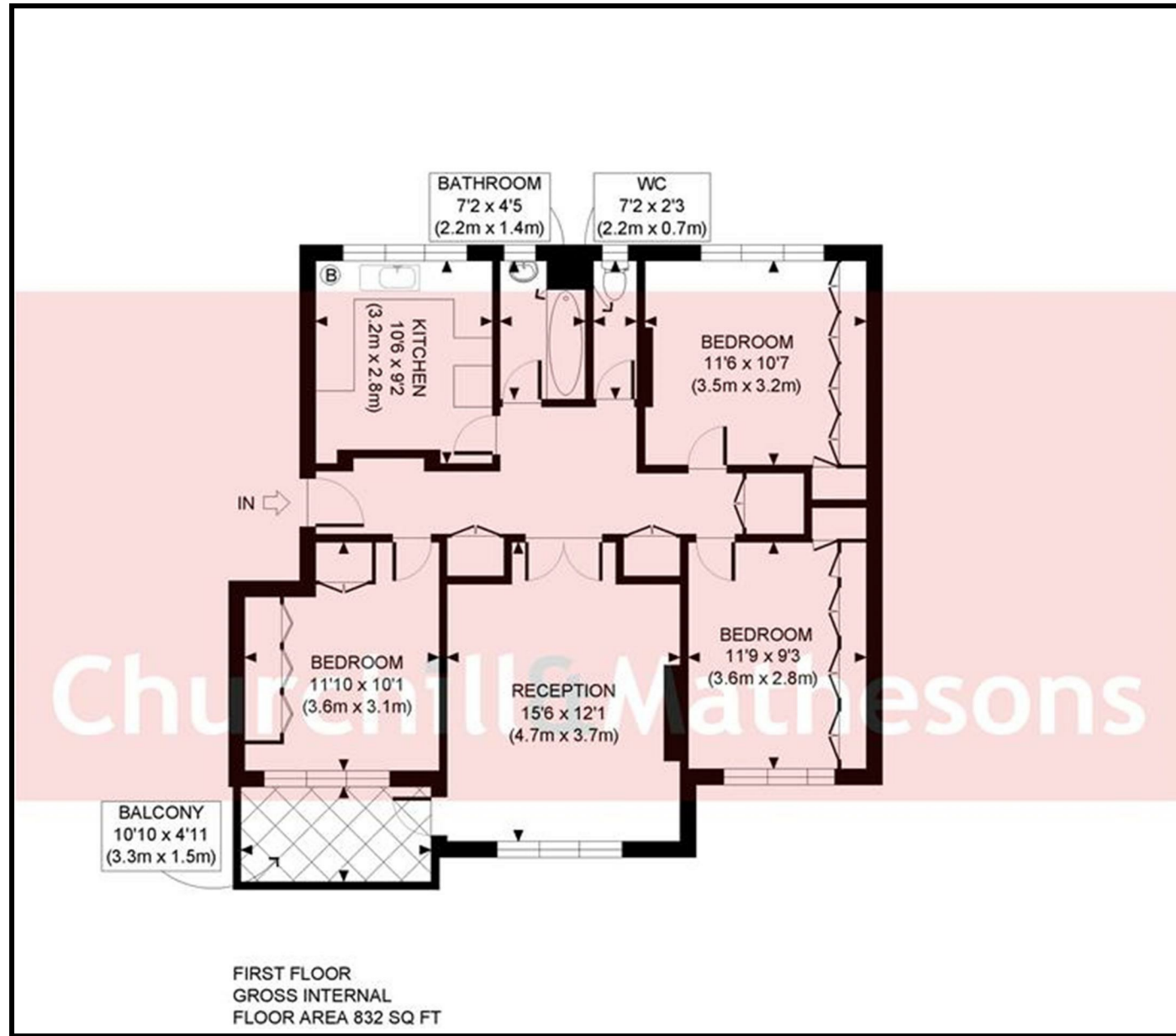
KEY FEATURES:

- 1ST FLOOR
- 3 BEDROOMS
- IMMACULATE CONDITION
- BALCONY
- CLOSE TO ACTON CENTRAL
- BIKE SHED

Welcome to Oak Way, Acton, London - a charming, well decorated, neat apartment on the 1st floor. This delightful 832 sqft flat boasts spacious living, perfect for comfortable living. The apartment has a large separate reception, small dining area, 3 well-appointed bedrooms with built in cupboards provide ample space for a growing family or those in need of a home office. One family bathroom and a separate toilet upstairs. Additionally, the balcony offers a lovely spot to enjoy a morning coffee or unwind after a long day, there is also a shed for bikes and other things.

Located in the heart of Acton, this property offers easy access to local amenities, Acton Park, David Lloyd Gym, sports club, great schools and Acton Central Station, making it an ideal choice for anyone looking for a comfortable and convenient place to call home.

Don't miss out on the opportunity to make this charming flat your own!



Energy Efficiency Rating

	Current	Potential
<i>Very energy efficient - lower running costs</i>		
(92 plus) A		
(81-91) B		
(69-80) C		
(55-68) D		
(39-54) E		
(21-38) F		
(1-20) G		
<i>Not energy efficient - higher running costs</i>		
	75	82
England & Wales	EU Directive 2002/91/EC	

Environmental Impact (CO₂) Rating

	Current	Potential
<i>Very environmentally friendly - lower CO2 emissions</i>		
(92 plus) A		
(81-91) B		
(69-80) C		
(55-68) D		
(39-54) E		
(21-38) F		
(1-20) G		
<i>Not environmentally friendly - higher CO2 emissions</i>		
England & Wales	EU Directive 2002/91/EC	

Whilst every effort is made to give a fair description, the accuracy of these particulars is not guaranteed, neither do they constitute an offer or contract.

CHURCHILL & MATHESONS ESTATE AGENTS have not tested any apparatus, equipment, fitting or services and so cannot verify that they are in working order. The buyer is advised to obtain verification from their solicitor or surveyor. Measurements are correct to within +/- 6 A sonic tape is used. None of the statements contained in these particulars or any of our properties are to be relied upon as a representation of fact.