



18 Old Oak Common Lane
Acton
London
W3 7EL
T: 020 8749 9798
E: sales@churchillmathesons.com
www.churchillmathesons.com

Churchill & Mathesons

Beechwood Grove, London, W3 7HX

Asking Price £335,000 Leasehold

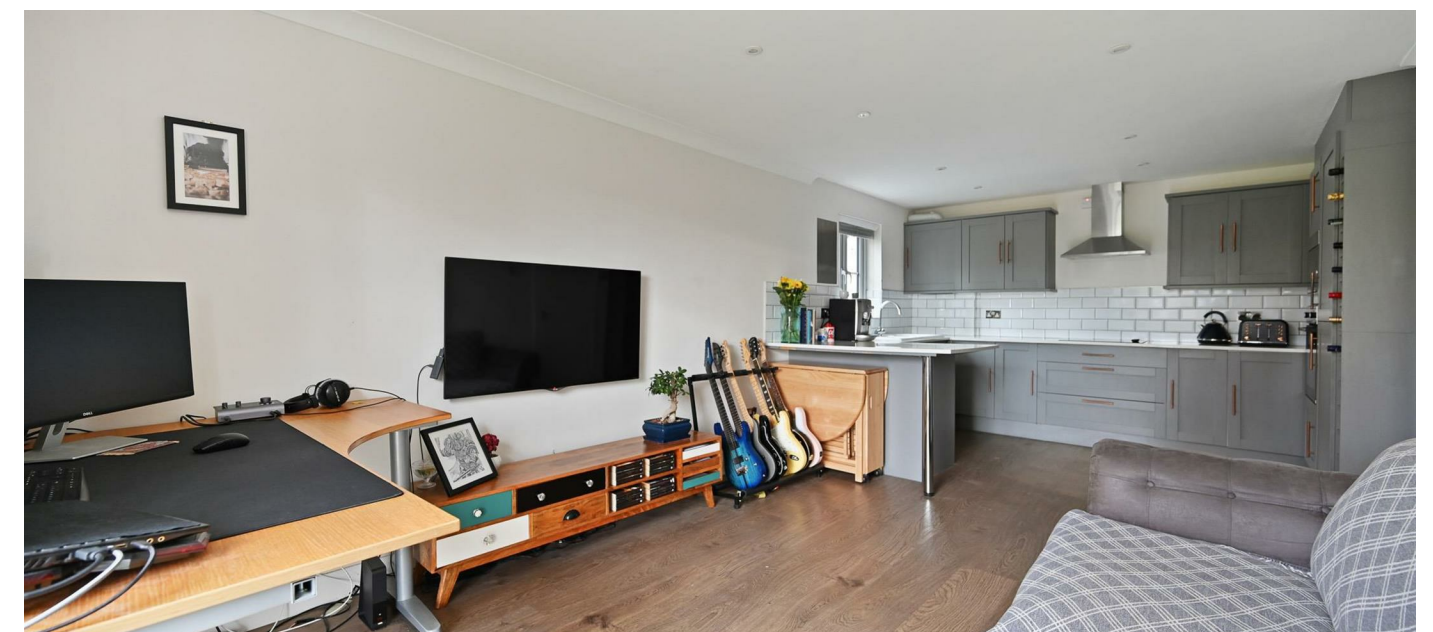
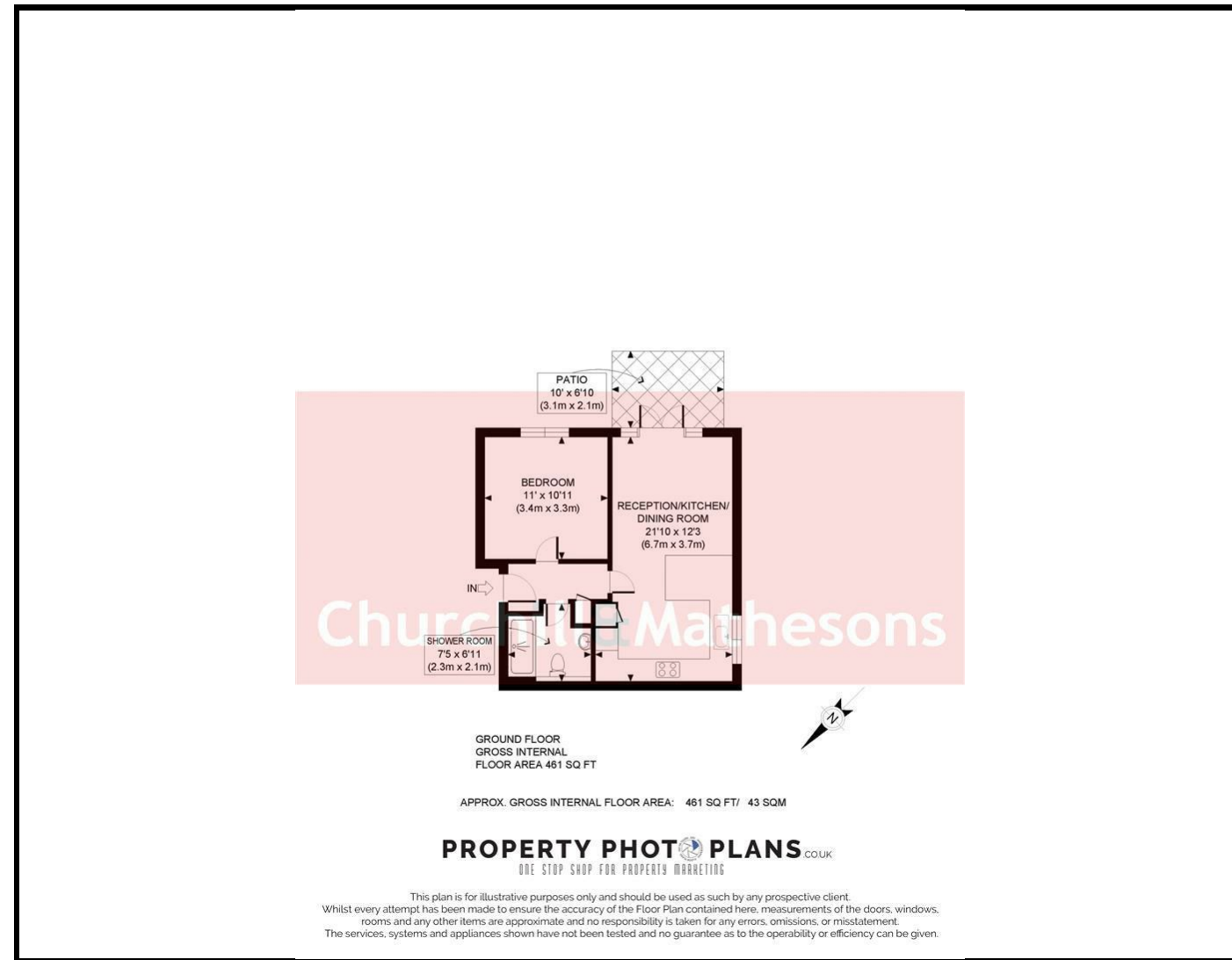


KEY FEATURES:

- GROUND FLOOR
- ONE BEDROOM
- PURPOSE BUILT FLAT
- OPEN PLAN LIVING ROOM
- WITH FITTED KITCHEN
- COMMUNAL GARDENS
- PARKING SPACE
- PRIVATE PATIO

FABULOUS GROUND FLOOR FLAT WITH PARKING

Churchill & Mathesons is proud to present this 461sqft 1x Bedroom ground floor flat with private patio and access onto a sunny SW facing communal garden. It is situated away from the main road, so quiet and private. The well-appointed kitchen with extensive cupboard space opens onto the living room, featuring contemporary wood-effect flooring and downlights. The bathroom is fully tiled with a heated towel rail, walk-in shower, basin and toilet. The flat also features an allocated off-road parking space.



Energy Efficiency Rating		
	Current	Potential
Very energy efficient - lower running costs		
(92 plus) A		
(81-91) B		
(69-80) C		
(55-68) D	64	
(39-54) E		
(21-38) F		
(1-20) G		
Not energy efficient - higher running costs		
England & Wales	EU Directive 2002/91/EC	

Environmental Impact (CO ₂) Rating		
	Current	Potential
Very environmentally friendly - lower CO ₂ emissions		
(92 plus) A		
(81-91) B		
(69-80) C		
(55-68) D		
(39-54) E		
(21-38) F		
(1-20) G		
Not environmentally friendly - higher CO ₂ emissions		
England & Wales	EU Directive 2002/91/EC	

Whilst every effort is made to give a fair description, the accuracy of these particulars is not guaranteed, neither do they constitute an offer or contract.

CHURCHILL & MATHESONS ESTATE AGENTS have not tested any apparatus, equipment, fitting or services and so cannot verify that they are in working order. The buyer is advised to obtain verification from their solicitor or surveyor. Measurements are correct to within +/-6 A sonic tape is used. None of the statements contained in these particulars or any of our properties are to be relied upon as a representation of fact.