



18 Old Oak Common Lane
Acton
London
W3 7EL
T: 020 8749 9798
E: sales@churchillmathesons.com
www.churchillmathesons.com

Churchill & Mathesons

Du Cane Road, London, W12 0BJ

Asking Price £650,000 Freehold



KEY FEATURES:

- THREE BEDROOM END OF TERRACE HOUSE
- TWO SEPARATE LIVING ROOMS
- DOWNSTAIRS WC
- FITTED KITCHEN
- FAMILY BATHROOM
- CLOSE TO EAST ACTON TUBE
- GAS CENTRAL HEATING
- DOUBLE GLAZING
- POPULAR FAMILY HOME
- PRIVATE GARDEN

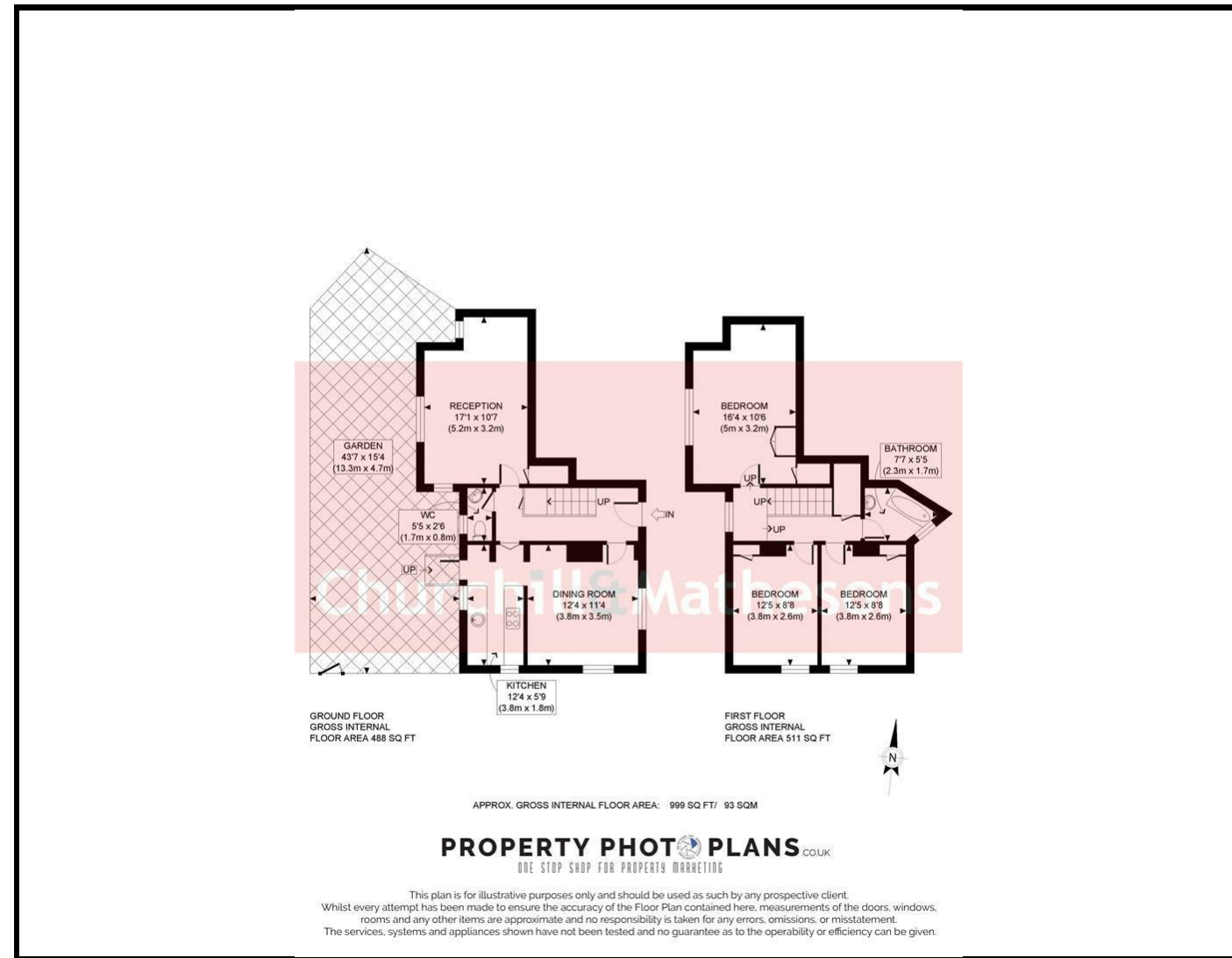
A GREAT 3 BEDROOM SEMI IN A PERFECT LOCATION

Churchill & Mathesons are proud to present this well designed 999sqft family home with Shakespeare Tudor front feature. Downstairs boasts an entrance hall with stairs to the 1st floor. Left is the dining room or second living room or a downstairs bedroom. On the right is a large living room that could be opened for access into a west facing private garden. A well-appointed kitchen and back door lead out into the garden. There is also a guest toilet.

Upstairs you will find 3 good size bedrooms with their own storage and a family bathroom with a bath and toilet.

Located 2 min from East Acton Station, shops, restaurants and easy access onto the A40. Close to Ark Conway Primary Academy, Old Oak Primary School and may more.

Hammersmith & Fulham Council
Council Tax Band: D



Energy Efficiency Rating		Current	Potential
Very energy efficient - lower running costs			
(92 plus) A			84
(81-91) B			
(69-80) C			
(55-68) D		55	
(39-54) E			
(21-38) F			
(1-20) G			
Not energy efficient - higher running costs			
England & Wales		EU Directive 2002/91/EC	

Environmental Impact (CO ₂) Rating		Current	Potential
Very environmentally friendly - lower CO ₂ emissions			
(92 plus) A			84
(81-91) B			
(69-80) C			
(55-68) D			
(39-54) E			
(21-38) F			
(1-20) G			
Not environmentally friendly - higher CO ₂ emissions			
England & Wales		EU Directive 2002/91/EC	

Whilst every effort is made to give a fair description, the accuracy of these particulars is not guaranteed, neither do they constitute an offer or contract.

CHURCHILL & MATHESONS ESTATE AGENTS have not tested any apparatus, equipment, fitting or services and so cannot verify that they are in working order. The buyer is advised to obtain verification from their solicitor or surveyor. Measurements are correct to within +/- 6 A sonic tape is used. None of the statements contained in these particulars or any of our properties are to be relied upon as a representation of fact.