



18 Old Oak Common Lane
Acton
London
W3 7EL
T: 020 8749 9798
E: sales@churchillmathesons.com
www.churchillmathesons.com

Churchill&Mathesons

Tamarisk Square, London, W12 0QE

Asking Price £750,000 Freehold



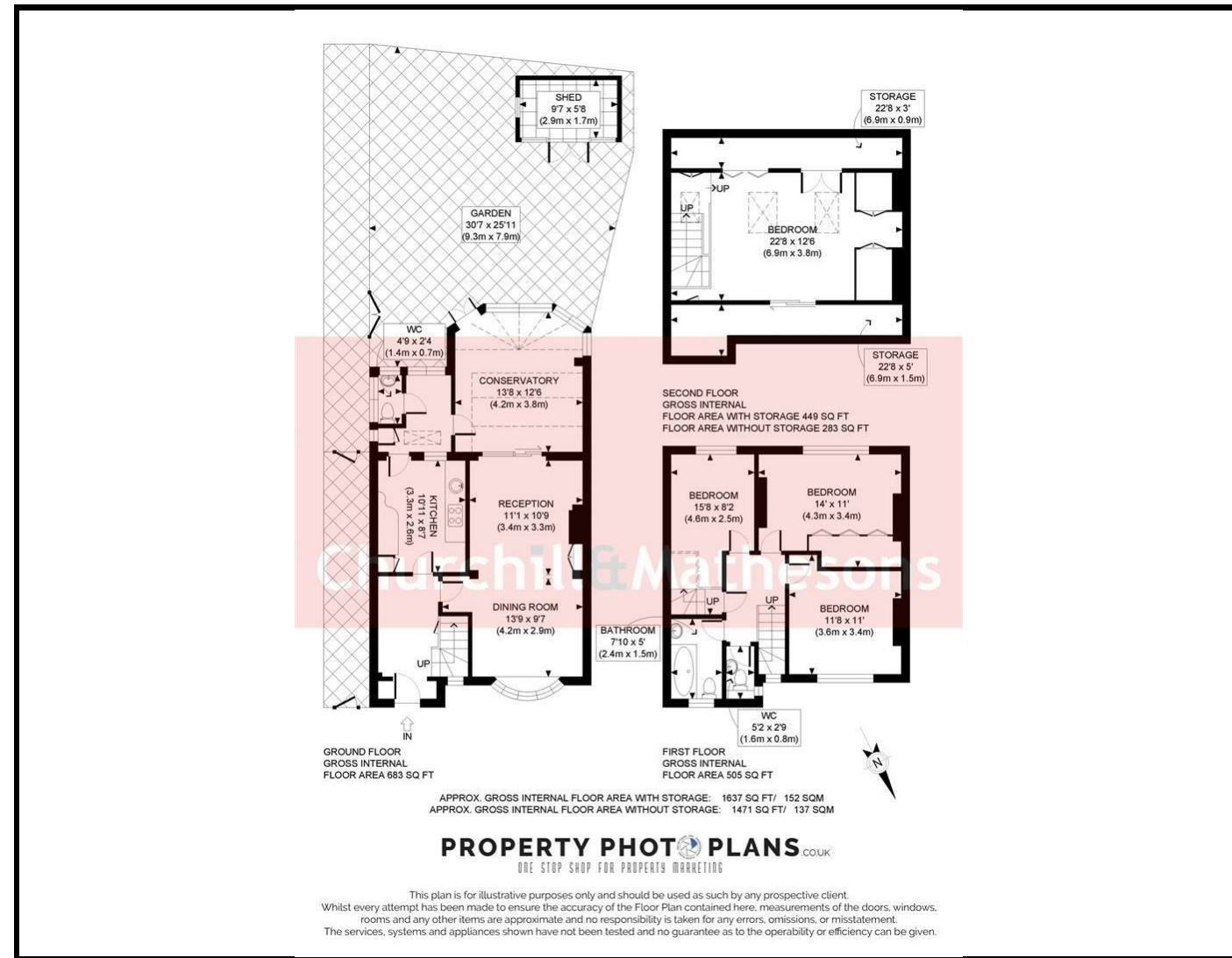
KEY FEATURES:

- FOUR BEDROOM HOUSE
- SPACIOUS
- CLOSE TO LOCAL SHOPS, RESTAURANTS, AND SCHOOLS
- CLOSE TO TRANSPORT
- QUIET LOCATION
- VIEWING HIGHLY RECOMMENDED

A stunning four-bedroom house located in a quiet square offering fantastic space and a beautiful finish throughout.

There are four double bedrooms, one bathroom, two WCs, and an abundance of entertaining and living space. On the ground floor the spacious kitchen leads out to great sized dining room and reception, which leads to a lovely open garden.

Tamarisk Square is a highly sought-after address, given its proximity to a selection of schools such as King Fahad Academy, along with the sports facilities at the Virgin Active Health Club opposite and the Park Club nearby. For transport links, the East Acton tube station and the Acton Central over-ground station both provide easy access in and out of Central London. London Borough of Hammersmith & Fulham. Council Tax Band E



Energy Efficiency Rating		
	Current	Potential
Very energy efficient - lower running costs		
(92 plus) A		
(81-91) B		
(69-80) C		
(55-68) D		
(39-54) E		
(21-38) F		
(1-20) G		
Not energy efficient - higher running costs		
England & Wales	EU Directive 2002/91/EC	

Environmental Impact (CO ₂) Rating		
	Current	Potential
Very environmentally friendly - lower CO ₂ emissions		
(92 plus) A		
(81-91) B		
(69-80) C		
(55-68) D		
(39-54) E		
(21-38) F		
(1-20) G		
Not environmentally friendly - higher CO ₂ emissions		
England & Wales	EU Directive 2002/91/EC	

Whilst every effort is made to give a fair description, the accuracy of these particulars is not guaranteed, neither do they constitute an offer or contract.

CHURCHILL & MATHESONS ESTATE AGENTS have not tested any apparatus, equipment, fitting or services and so cannot verify that they are in working order. The buyer is advised to obtain verification from their solicitor or surveyor. Measurements are correct to within +/-6 A sonic tape is used. None of the statements contained in these particulars or any of our properties are to be relied upon as a representation of fact.