



18 Old Oak Common Lane
Acton
London
W3 7EL
T: 020 8749 9798
E: sales@churchillmathesons.com
www.churchillmathesons.com

Churchill & Mathesons

Knatchbull Road, London, NW10 8GU

£553 Per Week

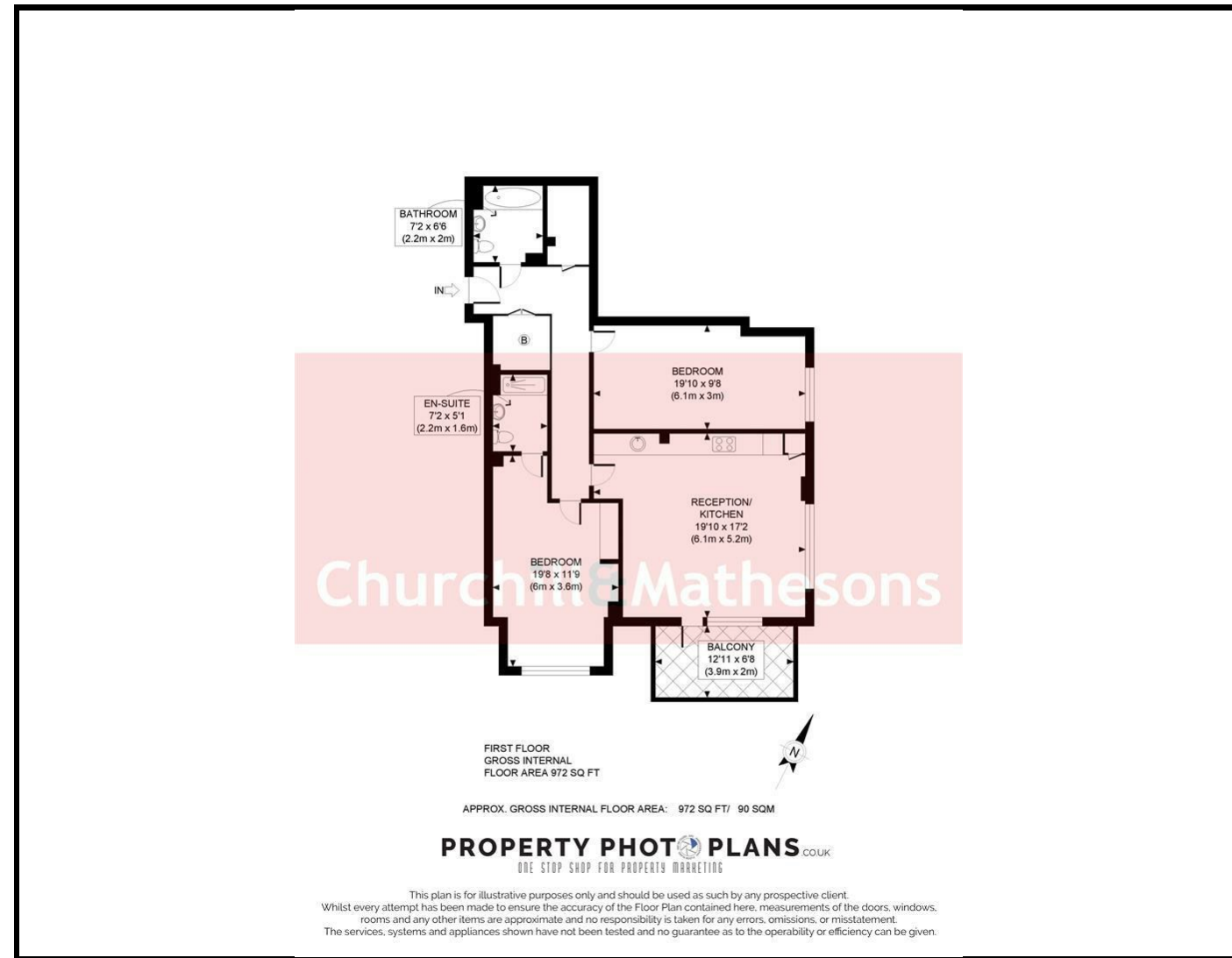


KEY FEATURES:

- A stunning 2 bedroom, 2 bathroom apartment
- Stylish open-plan kitchen with integrated appliances
- access to designated indoor parking lot
- NO PETS ALLOWED*
- FURNISHED~ AVAILABLE 1 AUGUST

A stunning 2 bedroom, 2 bathroom apartment

- * Fully furnished
- * Fully tiled modern en-suite
- * Large balcony space
- * Stylish open-plan kitchen with integrated appliances
- * Ventilation booster in the kitchen/living room area
- * Utility room with a drying rack and washing machine
- * Access to excellent storage spaces throughout the flat
- * Triple glazed windows for enhanced noise cancellation and temperature control
- * Remote-controlled garage gate that gives access to designated indoor parking lot
- Option for an electric car charger
- * Double/triple door security system within the property
- * Option available to set up ultra high speed fibre internet, with Hyper Optic as the suggested provider
- * NO PETS ALLOWED*
- * OPEN DAY 1ST JULY BETWEEN 12-1PM-CALL TO BOOK YOUR PLACE BEFORE YOU MISS OUT
- FURNISHED~ AVAILABLE 1 AUGUST



Energy Efficiency Rating		
	Current	Potential
Very energy efficient - lower running costs		
(92 plus) A		
(81-91) B	87	87
(69-80) C		
(55-68) D		
(39-54) E		
(21-38) F		
(1-20) G		
Not energy efficient - higher running costs		
England & Wales	EU Directive 2002/91/EC	

Environmental Impact (CO ₂) Rating		
	Current	Potential
Very environmentally friendly - lower CO ₂ emissions		
(92 plus) A		
(81-91) B		
(69-80) C		
(55-68) D		
(39-54) E		
(21-38) F		
(1-20) G		
Not environmentally friendly - higher CO ₂ emissions		
England & Wales	EU Directive 2002/91/EC	

Whilst every effort is made to give a fair description, the accuracy of these particulars is not guaranteed, neither do they constitute an offer or contract.

CHURCHILL & MATHESONS ESTATE AGENTS have not tested any apparatus, equipment, fitting or services and so cannot verify that they are in working order. The buyer is advised to obtain verification from their solicitor or surveyor. Measurements are correct to within +/-6 A sonic tape is used. None of the statements contained in these particulars or any of our properties are to be relied upon as a representation of fact.