

Buy. Sell. Rent. Let.

lovelle



Gainsborough Road, Market Rasen



3



2



2

When it comes to
property it must b


lovelle



£335,000

 3
  2
  2

DETACHED FAMILY HOME IN POPULAR RESIDENTIAL LOCATION. Spacious and flexible accommodation comprising entrance hall, lounge, kitchen, snug, 3 bedrooms, ensuite & bathroom. Generous Gardens to front and rear, extensive driveway, garage.

With open field views with NO ONWARD CHAIN

Key Features

- Detached Family Home
- Popular Residential Location
- Lots of Potential
- Spacious Accommodation
- Entrance Hall, Lounge, Snug
- Kitchen, Utility & WC
- EPC rating D
- Tenure: Freehold



lovelle



lovelle



lovelle



lovelle



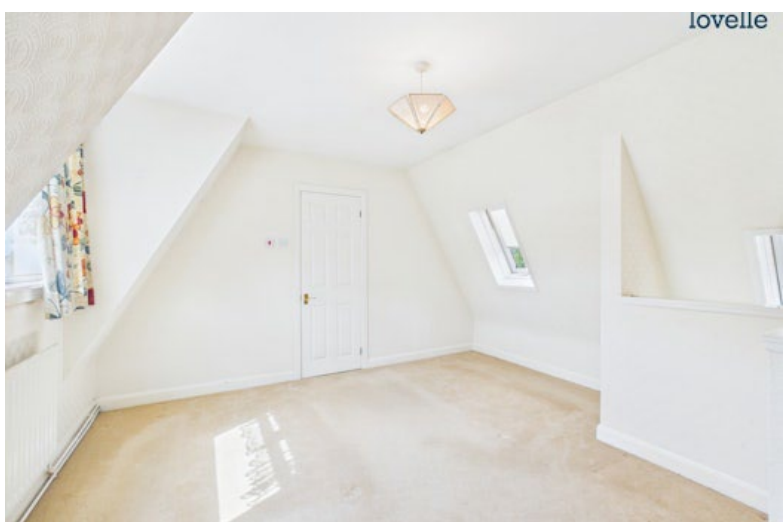
lovelle



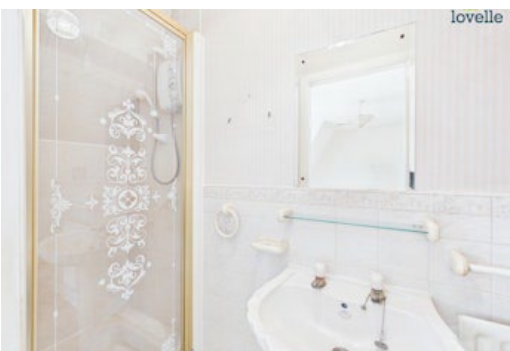
lovelle



lovelle



lovelle



Situation

Market Rasen town is popular with walkers and there are great routes and trails just five minutes stroll from the town centre. You can also head out to Willingham Woods where there are numerous trails and paths for all ages and abilities. In the town centre you will find traditional and long-standing family run shops including ironmongers, butchers, menswear confectionery, bakery & fruit & veg. The town boasts high-quality and award winning places to eat for all budgets. Market Rasen is approximately 16 miles from Lincoln City and 15 miles from the market town of Louth. There are regular bus and train services.

Porch 1.48m x 0.7m (4'11" x 2'4")

uPVC entrance door and double glazed window to front aspect

Entrance Hall 1.79m x 3.5m (5'11" x 11'6")

glazed entrance door, adjoining side screen, radiator and stairs to first floor accommodation

Snug 3.36m x 3.22m (11'0" x 10'7")

double glazed window to front aspect, radiator and feature fire place

Lounge 3.74m x 6.23m (12'4" x 20'5")

double glazed window to front aspect, double glazed window to side aspect, radiator, feature fire place and uPVC rear entrance door

Hallway 2.02m x 0.87m (6'7" x 2'11")

roof void access

Bedroom 2 3.15m x 3.31m (10'4" x 10'11")

double glazed window to front aspect, a range of fitted furniture and airing cupboard housing hot water cylinder and gas fired central heating boiler

Bedroom 3 2.77m x 2.8m (9'1" x 9'2")

double glazed window to rear aspect, double glazed window to side aspect and radiator

Bathroom 1.93m x 2.9m (6'4" x 9'6")

4 piece suite comprising low level WC, vanity hand wash basin, panelled bath, shower cubicle, fully tiled splash backs, laminate flooring, heated towel rail and double glazed window to rear aspect

Kitchen 2.17m x 3.74m (7'1" x 12'4")

a range of fitted wall and base units, electric oven, 4 ring hob, sink unit, radiator and double glazed window to rear aspect

Utility Room 3.65m x 3.03m (12'0" x 9'11")

double glazed windows to rear and side aspects, electric heater, vinyl flooring and uPVC rear entrance door

WC 1.09m x 1.7m (3'7" x 5'7")

low level WC, hand wash basin, tiled splash backs, vinyl flooring and double glazed window to side aspect

First Floor

Bedroom 1 4.16m x 4.11m (13'7" x 13'6")

double glazed window to front aspect, 2 'Velux' Style windows to rear aspect, radiator and roof void access

Ensuite 0.88m x 3.07m (2'11" x 10'1")

3 piece suite comprising low level WC, pedestal hand wash basin, shower cubicle, tiled splash backs, vinyl flooring and radiator

Gardens

occupying a generous plot with gardens front and rear. The front garden is mostly laid to lawn with planted shrubs. The rear garden is again mostly laid to lawn with planted shrubs and trees with a range of timber outbuildings

Driveway

extensive block paved driveway providing ample off road parking for a number of vehicles with turning circle

Garage

2 up and over doors to front and rear aspects

Agents Notes

These particulars are for guidance only. Lovelle Estate Agency, their clients and any joint agents give notice that:- They have no authority to give or make representation/warranties regarding the property, or comment on the SERVICES, TENURE and RIGHT OF WAY of any property.

These particulars do not form part of any contract and must not be relied upon as statements or representation of fact. All measurements/areas are approximate. The particulars including photographs and plans are for guidance only and are not necessarily comprehensive.





Approximate total area⁽¹⁾

1316 ft²
122.4 m²

Reduced headroom

21 ft²
2 m²

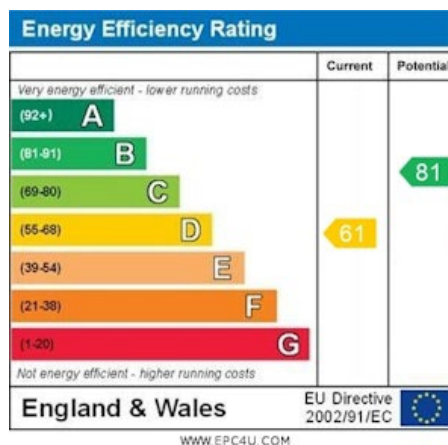
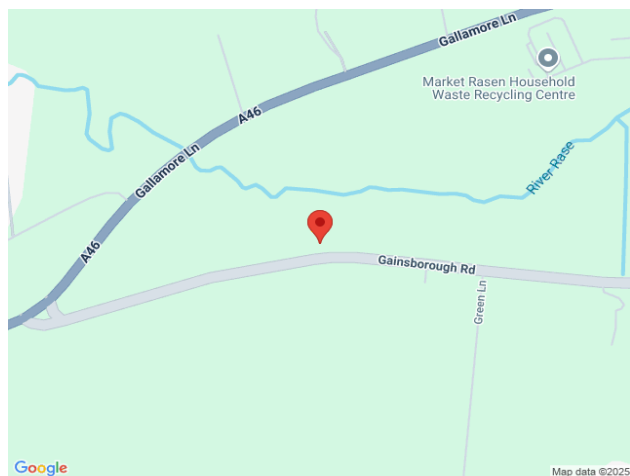
(1) Excluding balconies and terraces

Reduced headroom

Below 5 ft/1.5 m

While every attempt has been made to ensure accuracy, all measurements are approximate, not to scale. This floor plan is for illustrative purposes only.

Calculations were based on RICS IPMS 3C standard. Please note that calculations were adjusted by a third party and therefore may not comply with RICS IPMS 3C.



When it comes to **property**
it must be



01673 844069

marketrasen@lovelle.co.uk