

Buy. Sell. Rent. Let.



Ludford Road, Binbrook



When it comes to
property it must be


lovelle



£125,000

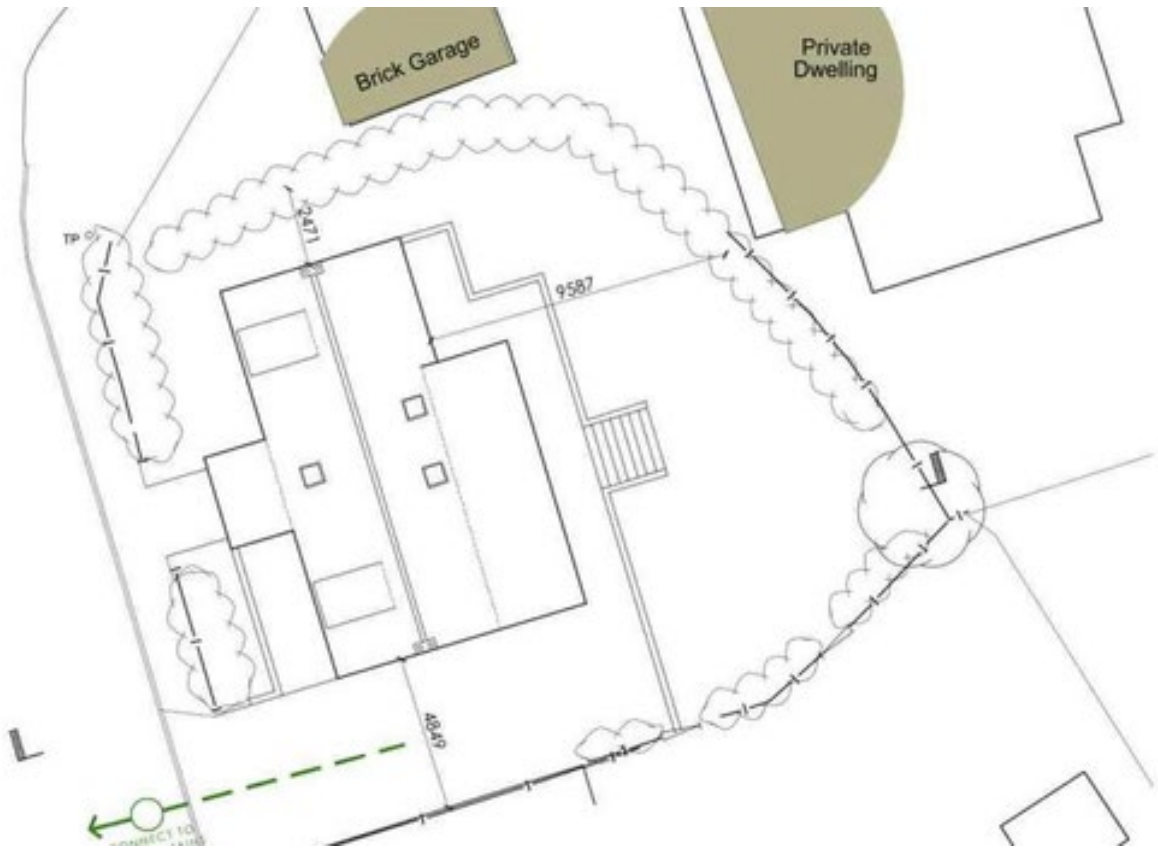
 3
  1
  2

EXCITING OPPORUNITY TO BUILD YOUR OWN HOME! This excellent spacious plot, within the popular Lincolnshire Wolds village of Binbrook offers a perfect opporunity to build your own bespoke property to your own specifications!

VIEWING ADVISED TO FULLY APPRECIATE

Key Features

- Spacious Building Plot
- Exciting Opporunity
- Popular Village Location
- Full Planning Permission Granted
- Exceptional 3 Bedroom Detached
- Private Gardens Front & Rear
- EPC rating TBC
- Tenure: Freehold



Situation

Situated in the charming village of Binbrook which has a wealth of amenities including a good primary school and early years centre, GP surgery, Post office, Village store, Take away, Hairdressers and Village Pub. Binbrook is just 8 miles from the popular market town of Market Rasen, 9 miles from the market town of Louth and 12 miles from Grimsby.

Description

Discover the perfect opportunity to build your dream home in the heart of Binbrook, a picturesque and highly sought-after village nestled in the Lincolnshire Wolds, an Area of Outstanding Natural Beauty. This generously sized building plot is ideally located, offering a peaceful, rural lifestyle while being within easy reach of local amenities, schools, and transport links to nearby towns like Market Rasen and Grimsby.

Key Features:

- Spacious plot ideal for bespoke home design
- Located in a charming, scenic village setting
- Surrounded by stunning countryside views
- Close proximity to essential amenities and services
- Quiet and safe neighbourhood, perfect for families

Whether you're looking to create a modern family home or a countryside retreat, this plot provides a rare chance to secure land in a coveted location. Don't miss this unique opportunity to shape your future home in beautiful Binbrook!

Planning Number

Planning Application Number - N/017/01152/23 - East Lindsey District Council

Agents Notes

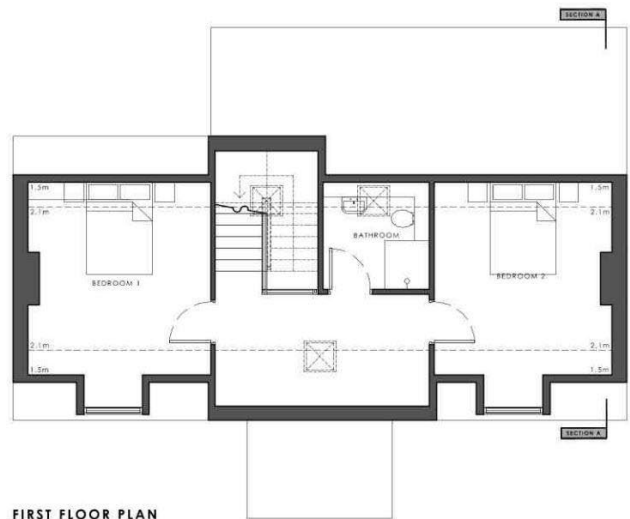
These particulars are for guidance only. Lovelle Estate Agency, their clients and any joint agents give notice that:- They have no authority to give or make representation/warranties regarding the property, or comment on the SERVICES, TENURE and RIGHT OF WAY of any property.

These particulars do not form part of any contract and must not be relied upon as statements or representation of fact. All measurements/areas are approximate. The particulars including photographs and plans are for guidance only and are not necessarily comprehensive.

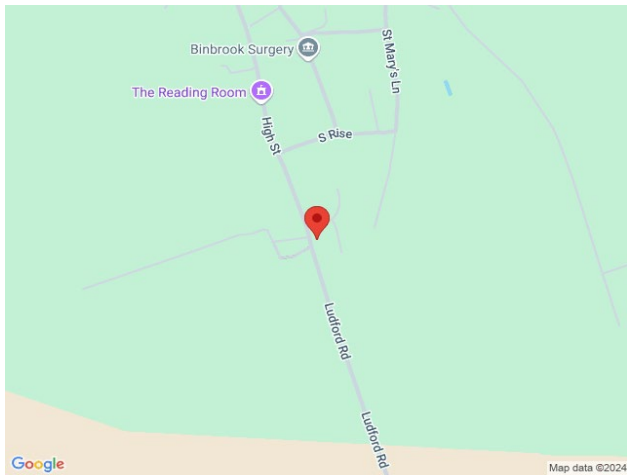




GROUND FLOOR PLAN



FIRST FLOOR PLAN



Google

Map data ©2024

When it comes to **property**
it must be


lovelle

01673 844069

marketrasen@lovelle.co.uk

