

Buy. Sell. Rent. Let.



Fitzwilliam Court, Market Rasen



When it comes to
property it must b


lovelle



£60,000



ATTENTION INVESTORS & FIRST TIME BUYERS - MODERN DEVELOPMENT We are pleased to offer for sale this ground floor 1 BEDROOM APARTMENT. Situated in the heart of Market Rasen. Close to all local amenities in popular market town of Market Rasen.

*** NO ONWARD CHAIN ***

Key Features

- Ground Floor Apartment
- Modern Development
- Town Centre Location
- Close to Local Amenities
- Lounge Diner, Kitchen
- Bedroom & Shower Room
- EPC rating TBC
- Tenure: Leasehold



Situation

Market Rasen town is popular with walkers and there are great routes and trails just five minutes stroll from the town centre. You can also head out to Willingham Woods where there are numerous trails and paths for all ages and abilities.

In the town centre you will find traditional and long-standing family run shops including ironmongers, butchers, menswear confectionery, bakery & fruit & veg. The town boasts high-quality and award winning places to eat for all budgets.

Market Rasen is approximately 16 miles from Lincoln City and 15 miles from the market town of Louth. There are regular bus and train services.

Lounge Diner

3.62m x 3.67m (11'11" x 12'0")

composite front entrance door, double glazed window to front aspect, 2 double glazed windows to side aspect and electric heater

Kitchen

2.25m x 1.36m (7'5" x 4'6")

a range of fitted wall and base units, electric oven, 4 ring electric hob, under counter fridge freezer, washing machine, stainless steel sink unit and vinyl flooring

Bedroom

2.99m x 3.27m (9'10" x 10'8")

2 double glazed windows to side aspect and electric heater

Shower Room

1.24m x 1.88m (4'1" x 6'2")

3 piece suite comprising low level WC, vanity hand wash basin, shower cubicle, tiled splash backs, heated towel rail and vinyl flooring

Leasehold Information

250 Year Lease From 2015 Ending - 01/12/2265

Ground Rent - £426.80 Per Annum

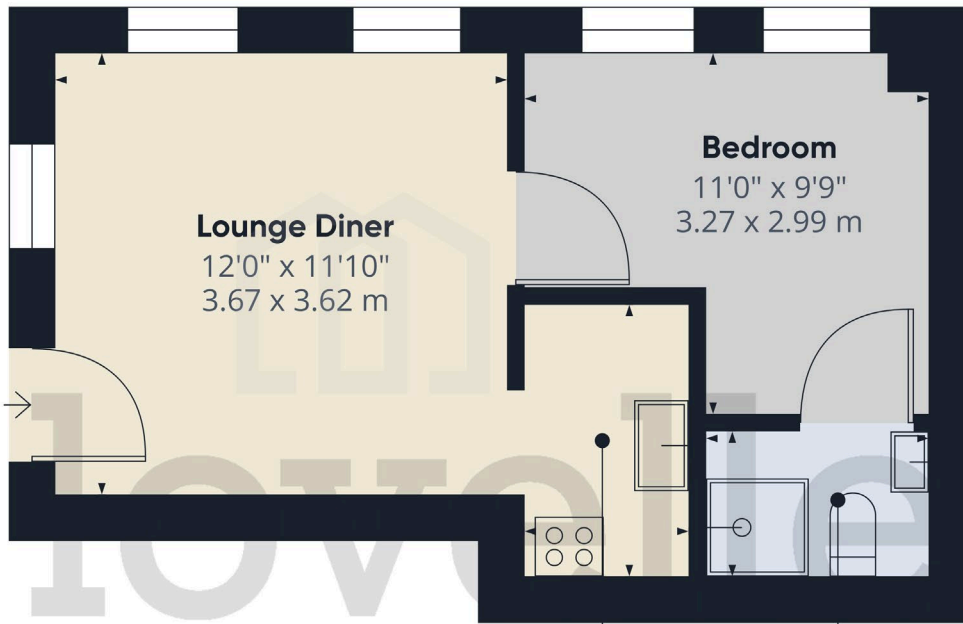
Maintenance Charge - £642.21 Per Annum

Agents Notes

These particulars are for guidance only. Lovelle Estate Agency, their clients and any joint agents give notice that:- They have no authority to give or make representation/warranties regarding the property, or comment on the SERVICES, TENURE and RIGHT OF WAY of any property.

These particulars do not form part of any contract and must not be relied upon as statements or representation of fact. All measurements/areas are approximate. The particulars including photographs and plans are for guidance only and are not necessarily comprehensive.





Approximate total area⁽¹⁾
294.82 ft²
27.39 m²

(1) Excluding balconies and terraces

While every attempt has been made to ensure accuracy, all measurements are approximate, not to scale. This floor plan is for illustrative purposes only.

GIRAFFE360



When it comes to **property**
it must be



01673 844069