

Buy. Sell. Rent. Let.

lovelle



Flat 1, Mill View Court, Vernon Street, Lincoln LN5 7PQ



1



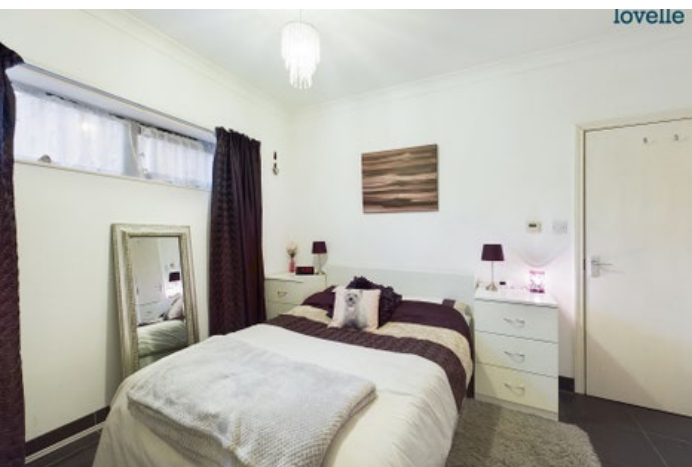
1



1

When it comes to
property it must be


lovelle



Asking Price - £90,000



ATTENTION INVESTORS! TENANTS IN SITU. UNIQUE 1 BEDROOM APARTMENT. A MUST VIEW TO APPRECIATE! *CLICK ON OUR INTERACTIVE VIRTUAL 360 TOUR*

Key Features

- One Bedroom Apartment
- Converted unique property
- Tenant in Situ
- Ideal investment opportunity
- Council Tax Band : A
- EPC Rating : C
- Tenure: Leasehold



This cozy apartment is perfect for investors as it's currently tenanted. It has a lounge, a modern kitchen with integrated appliances and plenty of storage space, a comfortable bedroom, and an elegant bathroom with a shower. The apartment is bright and well-ventilated, making it a comfortable and enjoyable living space.

The property is fully double glazed. With underfloor heating throughout. Council Tax Band : A

Agent Notes

These particulars are for guidance only. Lovelle Estate Agency, their clients and any joint agents give notice that:-

They have no authority to give or make representation/warranties regarding the property, or comment on the SERVICES, TENURE and RIGHT OF WAY of any property.

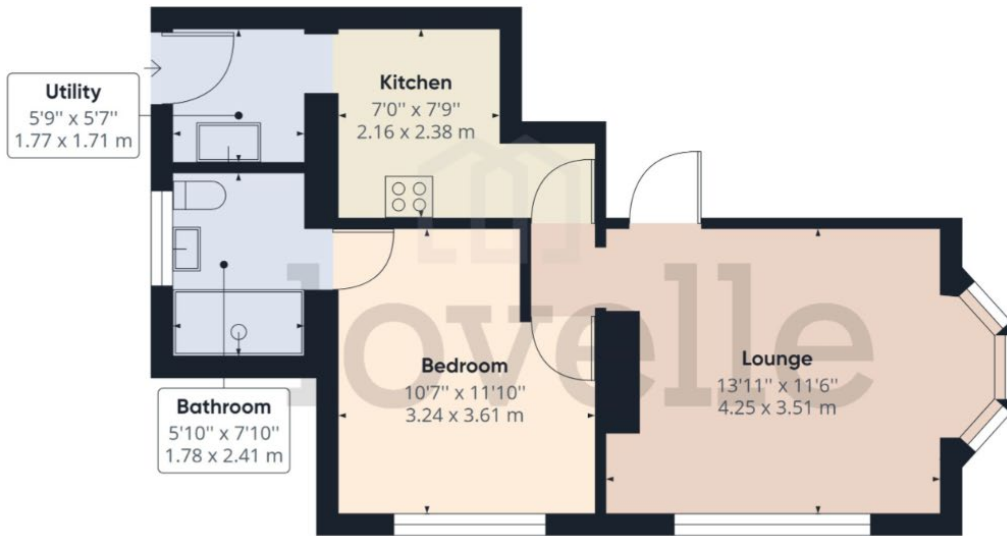
These particulars do not form part of any contract and must not be relied upon as statements or representation of fact.

All measurements/areas are approximate. The particulars including photographs and plans are for guidance only and are not necessarily comprehensive.

Leasehold Information

980 years remaining

Service Charge - £820 per year approx



Approximate total area⁽¹⁾
451.67 ft²
41.96 m²

(1) Excluding balconies and terraces

While every attempt has been made to ensure accuracy, all measurements are approximate, not to scale. This floor plan is for illustrative purposes only.

GIRAFFE 360

When it comes to **property**
it must be


lovelle

01522 305605

lincoln@lovelle.co.uk