

Buy. Sell. Rent. Let.

lovelle



36 Harpswell Road, Lincoln LN2 2JH



When it comes to  
property it must b

  
lovelle



Starting Bid - £175,000



Discover convenience and tranquility in this detached bungalow at 36 Harpswell Road, with 2 bedrooms, a sunroom, private garden, parking, and garage, all in a popular location close to the city and amenities, and sold with no chain. \*CLICK ON OUR INTERACTIVE VIRTUAL 360 TOUR\*

**Key Features**

- Detached bungalow
- Prime location near the city and essential amenities
- Open lounge-diner and sunroom
- Parking and garage
- Private rear garden
- Two bedrooms
- EPC rating TBC
- Tenure: Freehold
- Council Tax Band : C



lovelle



lovelle



lovelle



lovelle



lovelle



lovelle



lovelle



lovelle

Nestled in a highly sought-after location and offering a seamless blend of convenience and comfort, the detached bungalow at 36 Harpswell Road presents an enticing opportunity for those seeking a tranquil yet accessible living space. With its prime proximity to both the city and essential amenities, this bungalow exemplifies the best of both worlds.

Step inside to discover an inviting open lounge-diner, a perfect space for relaxation and hosting gatherings. The property also boasts a sunroom that bathes the interior in natural light, seamlessly connecting indoor and outdoor living.

For practicality and ease, the property includes parking and a garage at the front, ensuring your vehicles are safely accommodated. The private rear garden is a delightful haven, offering the ideal setting for leisure, gardening, and enjoying the outdoors.

This bungalow offers two well-appointed bedrooms, providing comfort and versatility. As an added bonus, the property is being sold with no chain, streamlining the purchasing process.

Situated in a popular location, close to the city and essential amenities, 36 Harpswell Road is a remarkable opportunity for those looking to find the perfect balance between convenience and tranquility. Don't miss your chance to explore this enticing property.

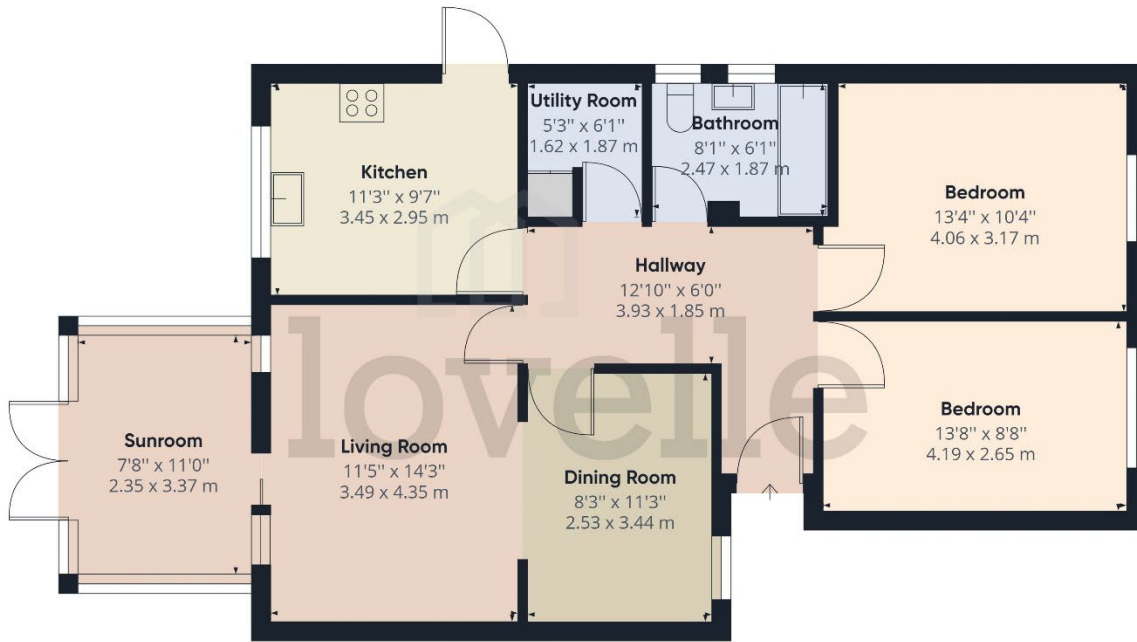
### Agent Notes

These particulars are for guidance only. Lovelle Estate Agency, their clients and any joint agents give notice that:-

They have no authority to give or make representation/warranties regarding the property, or comment on the SERVICES, TENURE and RIGHT OF WAY of any property.

These particulars do not form part of any contract and must not be relied upon as statements or representation of fact.

All measurements/areas are approximate. The particulars including photographs and plans are for guidance only and are not necessarily comprehensive.



Approximate total area<sup>(1)</sup>  
923.93 ft<sup>2</sup>  
85.84 m<sup>2</sup>

(1) Excluding balconies and terraces

While every attempt has been made to ensure accuracy, all measurements are approximate, not to scale. This floor plan is for illustrative purposes only.

GIRAFFE 360

When it comes to **property**  
it must be



# lovelle

01522 305605

lincoln@lovelle.co.uk