

Buy. Sell. Rent. Let.

lovelle



10 The Carrs, Welton, Lincoln LN2 3HB



4



2



2

When it comes to
property it must be


lovelle



Offers in Excess of £315,000



4-bed detached in Welton, with modern extensions, double driveway, solar panels, and versatile living spaces. ***CLICK ON OUR INTERACTIVE VIRTUAL 360 TOUR***

Key Features

- 4-bed detached in Welton village
- Modern extensions including an extended dining area
- Double driveway
- Energy-efficient with freehold solar panels
- Versatile living spaces, including a ground floor office/5th bedroom
- Private rear garden
- EPC rating B
- Tenure: Freehold
- Council Tax Band : C



lovelle



lovelle



lovelle



lovelle



lovelle



lovelle



lovelle



lovelle



Spacious 4-Bedroom Detached House with Modern Extensions

Welcome to this stylish 4 double bedroom home located in a quiet cul-de-sac in Welton village. With a contemporary feel and plenty of space, this house offers comfortable living for the whole family.

Inside, you'll find a large lounge perfect for relaxing, kitchen with a dining area, and an extended dining area that doubles as a second family room, providing versatile living spaces.

Upstairs, there are four bedrooms, including a master with an en-suite bathroom for added privacy.

Outside, there's a double driveway for parking, plus solar panels for energy efficiency. The private rear garden is great for outdoor activities and enjoying the sunshine.

Located in popular Welton village, you'll have easy access to local amenities and countryside walks, while still being close to nearby cities.

Don't miss out on this wonderful home - book your viewing today!

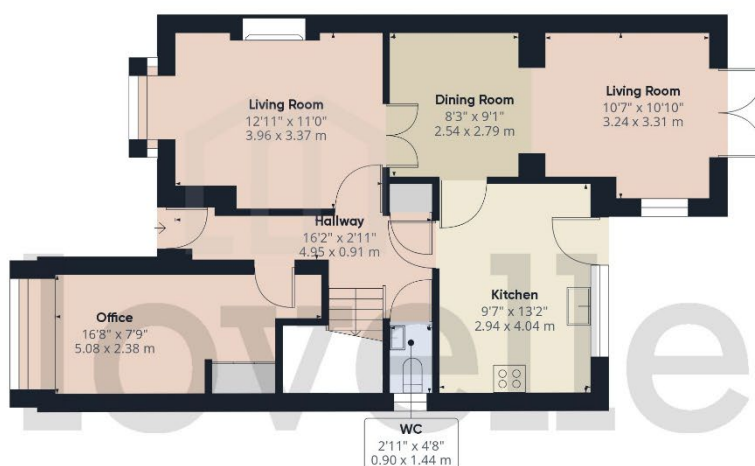
Agent Notes

These particulars are for guidance only. Lovelle Estate Agency, their clients and any joint agents give notice that:-

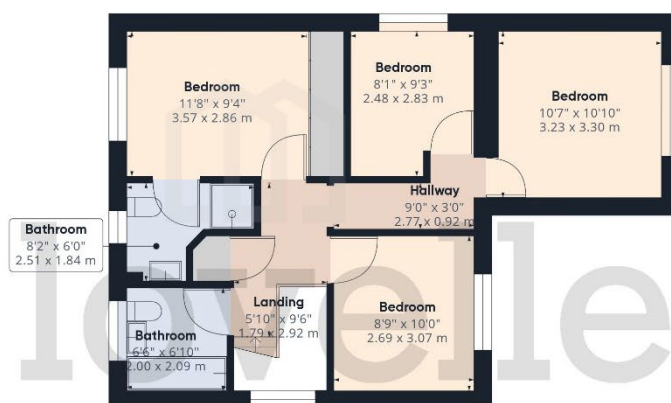
They have no authority to give or make representation/warranties regarding the property, or comment on the SERVICES, TENURE and RIGHT OF WAY of any property.

These particulars do not form part of any contract and must not be relied upon as statements or representation of fact.

All measurements/areas are approximate. The particulars including photographs and plans are for guidance only and are not necessarily comprehensive.



Ground Floor



Floor 1

Approximate total area[®]

1310.44 ft²

121.74 m²

(1) Excluding balconies and terraces

While every attempt has been made to ensure accuracy, all measurements are approximate, not to scale. This floor plan is for illustrative purposes only.

GIRAFFE360



When it comes to **property** it must be