

Buy. Sell. Rent. Let.



Willingham Court, Chapman Street, Market Rasen



When it comes to
property it must b





£139,950



SEMI DETACHED BUNGALOW. This spacious and well presented property is situated in a town centre location and is close to local amenities. Briefly comprising kitchen, lounge, 2 bedrooms and bathroom. **EXCELLENT INVESTMENT / FIRST TIME BUY. NO ONWARD CHAIN**

Key Features

- Semi Detached Bungalow
- Spacious Accommodation
- Town Centre Location
- Close to Local Amenities
- Well Presented Throughout
- Kitchen, Lounge Diner
- EPC rating D
- Tenure: Leasehold



Situation

Market Rasen town is popular with walkers and there are great routes and trails just five minutes stroll from the town centre. You can also head out to Willingham Woods where there are numerous trails and paths for all ages and abilities. In the town centre you will find traditional and long-standing family run shops including ironmongers, butchers, menswear confectionery, bakery & fruit & veg. The town boasts high-quality and award winning places to eat for all budgets. Market Rasen is approximately 16 miles from Lincoln City and 15 miles from the market town of Louth. There are regular bus and train services.

Kitchen

3.30m x 3.26m (10'10" x 10'8")

a range of fitted wall and base units, electric oven, 4 ring hob, stainless steel sink unit, space and plumbing for washing machine, tiled splash backs, vinyl flooring, double glazed window to side aspect and uPVC entrance door

Lounge Diner

4.46m x 3.28m (14'7" x 10'10")

double glazed windows to front and side aspect and electric heater

Hallway

3.16m x 0.90m (10'5" x 3'0")

electric heater, roof void access, vinyl flooring and airing cupboard housing hot water cylinder

Bedroom 1

3.80m x 3.42m (12'6" x 11'2")

double glazed window to side aspect and electric heater

Bedroom 2

2.27m x 3.36m (7'5" x 11'0")

double glazed window to front aspect and electric heater

Bathroom

1.68m x 2.42m (5'6" x 7'11")

3 piece suite comprising low level WC, pedestal hand wash basin, panelled bath with electric shower over, tiled splash backs, vinyl flooring and double glazed window to side aspect

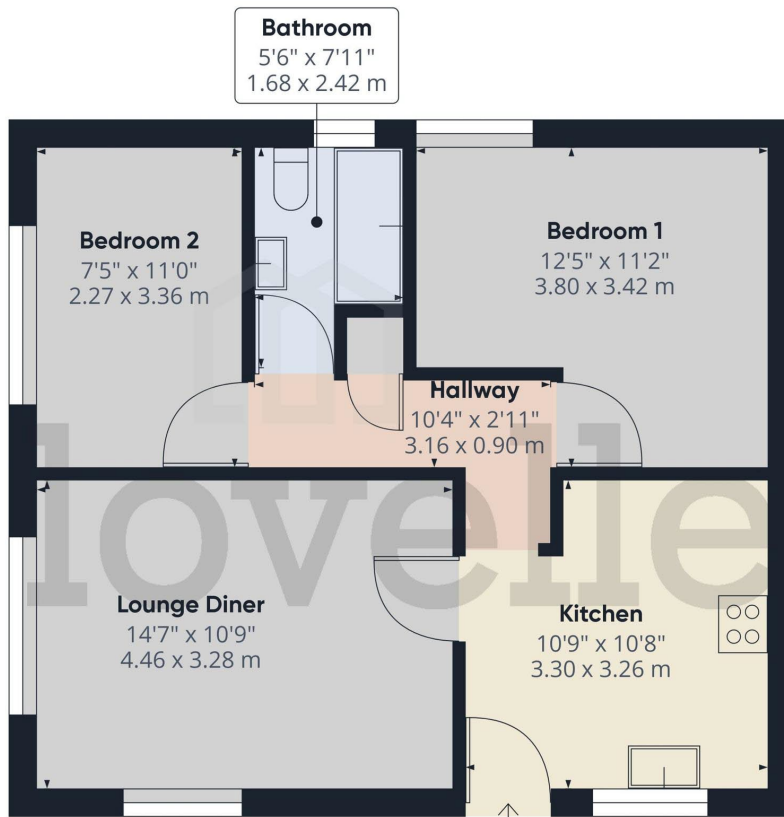
Leasehold Information

The lease length is 125 years from 01/01/2020.

Agents Notes

These particulars are for guidance only. Lovelle Estate Agency, their clients and any joint agents give notice that:- They have no authority to give or make representation/warranties regarding the property, or comment on the SERVICES, TENURE and RIGHT OF WAY of any property.

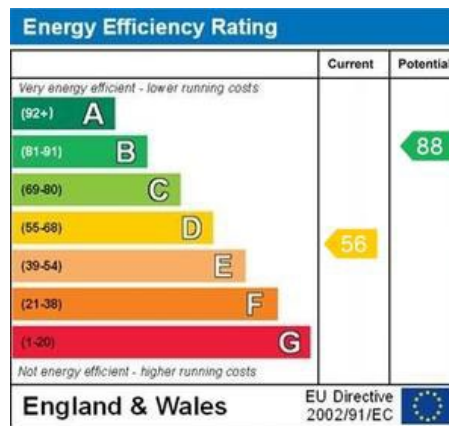
These particulars do not form part of any contract and must not be relied upon as statements or representation of fact. All measurements/areas are approximate. The particulars including photographs and plans are for guidance only and are not necessarily comprehensive.



Approximate total area⁽¹⁾
569.56 ft²
52.91 m²

(1) Excluding balconies and terraces

While every attempt has been made to ensure accuracy, all measurements are approximate, not to scale. This floor plan is for illustrative purposes only.



When it comes to **property**
it must be



01673 844069

marketrasen@lovelle.co.uk