



**KALMARs**

**Grices Wharf Apartments, Rotherhithe  
Street, London, Greater London, SE16**



# Grices Wharf Apartments, Rotherhithe Street, London, Greater London, SE16

## Description

Luxury Warehouse Conversion with Stunning River Views, Available now!

This apartment is a rare find. Generously sized, it comprises two double bedrooms and two bathrooms.

Designed in an open-plan layout, the interiors showcase whitewashed original brickwork, exposed beams (rumoured to originate from ships involved in Nelsons fleet), and accentuated by feature LED lighting. Almost all units offer picturesque river views accompanied by the tranquil sounds of the river. The bathrooms are elegantly finished with Porcelthin Calcata tiling, while the kitchen is equipped with designer appliances, a wine cooler, and Corian worktops.

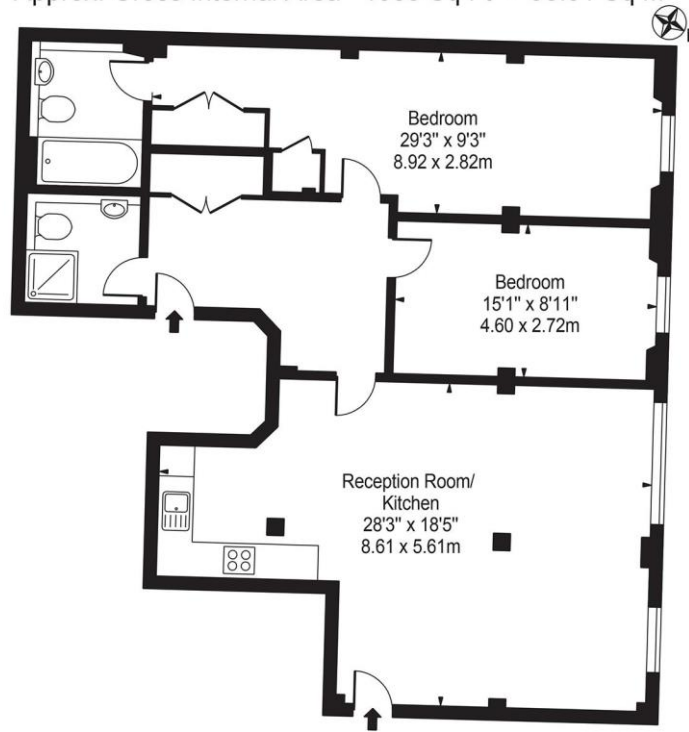
## LOCATION:

Positioned in one of the most desirable parts of Rotherhithe Village, like a small oasis, this apartment is conveniently located. Within a 10-minute walk, residents can access popular establishments such as the Canada Water Café, Canada Water Library, and Albion Street Scandinavian Market.





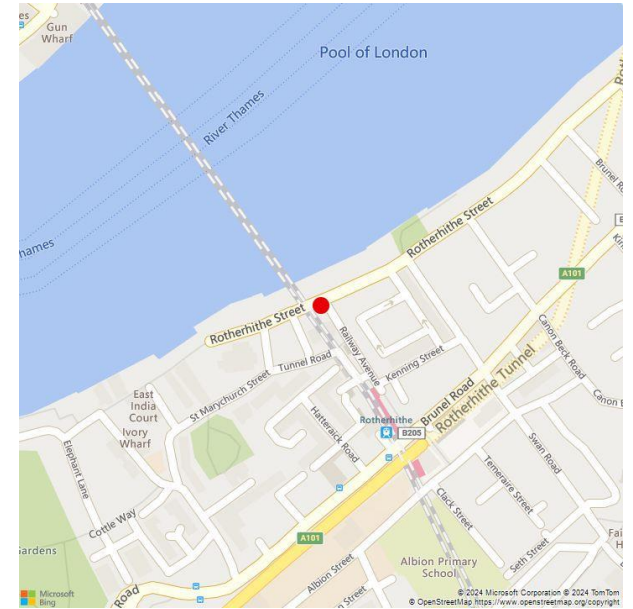
**Grices Wharf,  
Rotherhithe Street. SE16 4NF**  
Approx. Gross Internal Area 1055 Sq Ft - 98.01 Sq M



Ground Floor

For Illustration Purposes Only - Not To Scale - Floor Plan by interDesign Photography  
[www.interdesignphotography.com](http://www.interdesignphotography.com)

This floor plan should be used as general outline for guidance only.  
All measurements are approximate and for illustration purposes only as defined by the RICS Code of Measuring Practice ©2016.



**KALMARS**

**Jamaica Wharf, 2 Shad Thames, London, SE1 2YU**  
**T 0207 940 7980**  
**E [info@kalmars.com](mailto:info@kalmars.com)**

IMPORTANT: we would like to inform prospective purchasers that these sales particulars have been prepared as a general guide only. A detailed survey has not been carried out, nor the services, appliances and fittings tested. Room sizes should not be relied upon for furnishing purposes and are approximate. If floor plans are included, they are for guidance only and illustration purposes only and may not be to scale. If there are any important matters likely to affect your decision to buy, please contact us before viewing the property.