



KALMARs

Colorama Building, Webber Street , SE1
3 Bedroom Apartment



Colorama Building , Webber Street , SE1

£738 per week

Description

Available from 28th July 2021.

This luxury three-bedroom new-build apartment is situated on the 5th floor. The apartment has been fitted with the top specifications and is 860sq ft. The apartment benefits from its own private balcony and an open plan kitchen/living area. The kitchen includes stone composite worktops with designer 'Bosch' integrated appliances. The spacious open-plan kitchen, living room and hallway have oak wood flooring throughout.

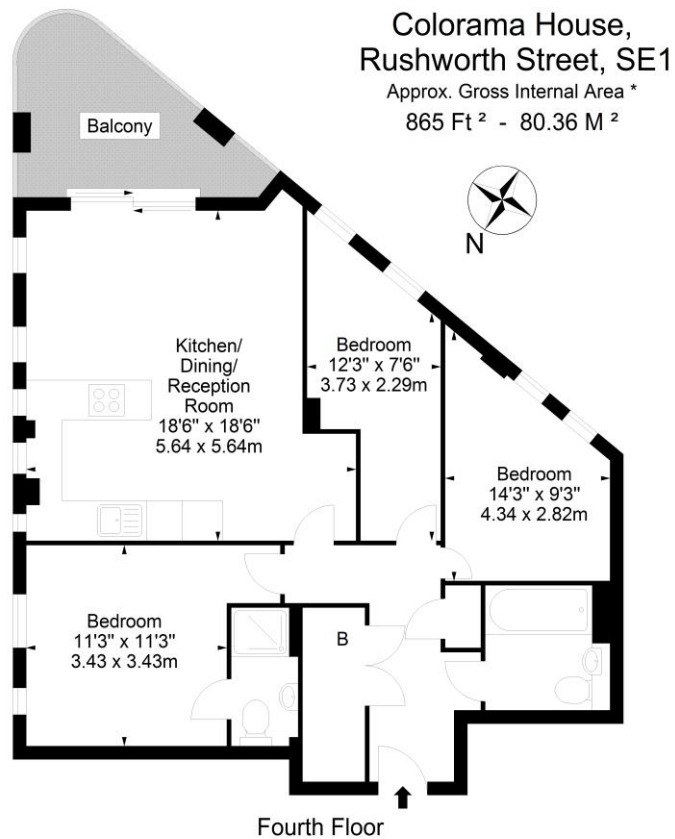
The development benefits from plenty of natural light and panoramic views of The Shard, London Eye, Canary Wharf and the City. Further benefits include built-in storage space, video entry system, underfloor heating, low energy LED lighting, lift access and a residents' roof top terrace. The three-piece bathroom suite is finished with porcelain tiles. Available furnished or unfurnished. The exclusive furniture packages are from David Phillip (included in the rent).

Its convenient location makes it a great place to live for those who are seeking a contemporary urban lifestyle within a spacious apartment. Webber Street is in close proximity to some of London's most fashionable quarters; South Bank, Bankside, The Cut and it is walking distance from attractions including Borough Market, Gordon Ramsey's Union St Café and the new shopping facilities emerging at the foot of The Shard.

Local stations include Southwark and Borough (walking distance) which are both less than half a mile walk, plus there is a range of bus and cycle routes.

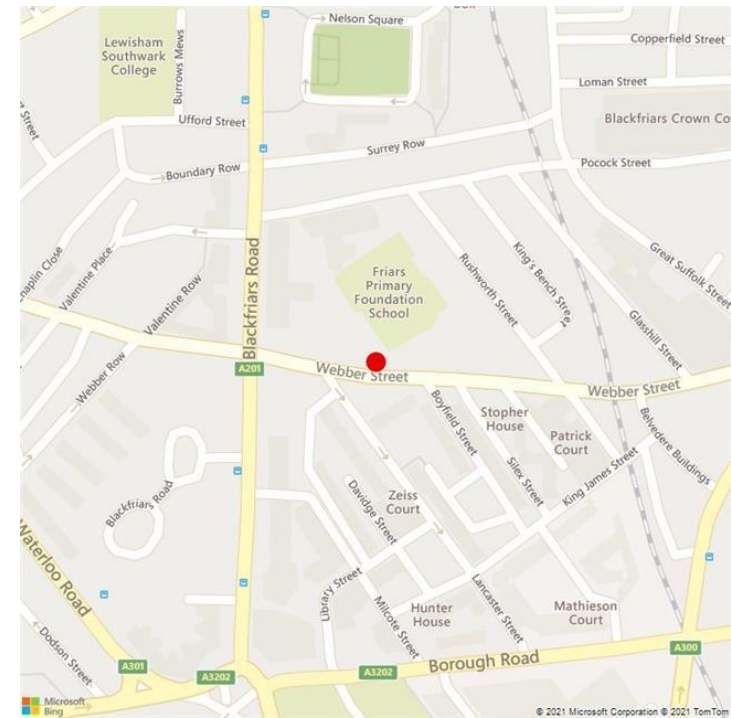






For Illustration Purposes Only - Not To Scale - Floor Plan by interDesign Photography
www.interdesignphotography.com

This floor plan should be used as general outline for guidance only.
 All measurements are approximate and for illustration purposes only as defined by the RICS Code of Measuring Practice © 2021



KALMARS

Jamaica Wharf, 2 Shad Thames London, SE1 2YU
T 0207 940 7980
E info@kalmars.com

IMPORTANT: we would like to inform prospective purchasers that these sales particulars have been prepared as a general guide only. A detailed survey has not been carried out, nor the services, appliances and fittings tested. Room sizes should not be relied upon for furnishing purposes and are approximate. If floor plans are included, they are for guidance only and illustration purposes only and may not be to scale. If there are any important matters likely to affect your decision to buy, please contact us before viewing the property.