



St Giles Cottage, Lea, Malmesbury, Wiltshire, SN16 9PG

Detached cottage
Updated interior
3 bedrooms
Living room
Kitchen/dining room
Good-sized plot
Private parking
Popular village location
No onward chain



01666 840 886
jamespyle.co.uk



The Barn, Swan Barton, Sherston, Wiltshire, SN16 0LJ
James Pyle Ltd trading as James Pyle & Co. Registered in England & Wales No: 08184953

Price Guide: £430,000

Approximately 801 sq.ft

‘Situated in the desirable village of Lea, this detached cottage sits in a good-sized plot with an updated 3 bedroom interior’



The Property

St Giles Cottage is a gorgeous, three-bedroom period cottage, situated opposite the primary school in the sought-after village of Lea. The cottage has just been refurbished to a high standard throughout and comprises of a lovely and light kitchen/dining room, a cosy living room, and a large family bathroom with a shower over the bath on the ground floor. Upstairs are three good sized bedrooms. Externally there is a lovely garden mainly laid to lawn and plenty of off-street parking.

Situation

Lea is a pretty and very sought after village situated approximately two and a half miles east of Malmesbury surrounded by beautiful Wiltshire countryside with a

network of footpaths and bridleways, ideal for those who enjoy the outdoor life. Lea has an excellent Primary School, a very good public house with restaurant and a parish church. Nearby Malmesbury, an ancient hilltop market town, is reputed to be the oldest borough in England. Today, the High Street has numerous independent shops, pubs and restaurants and a regular weekly Farmer's market whilst the town has excellent choice of both primary and secondary schools and good recreational and leisure facilities. The M4 motorway (J17) to the south provides fast road access to the major employment centres of Bristol and Swindon together with London and the West Country. Main line rail services are available from Chippenham and Kemble (Paddington in about 75 minutes).

Additional Information

The property is Freehold with oil-fired central heating, mains drainage, water and electricity. Ultrafast broadband is available and there is mobile phone coverage with some limitations. Information taken from the Ofcom mobile and broadband checker, please see the website for more information. Wiltshire Council Tax Band D.

Agents Note: The images were taken before renovations were completed.

Directions

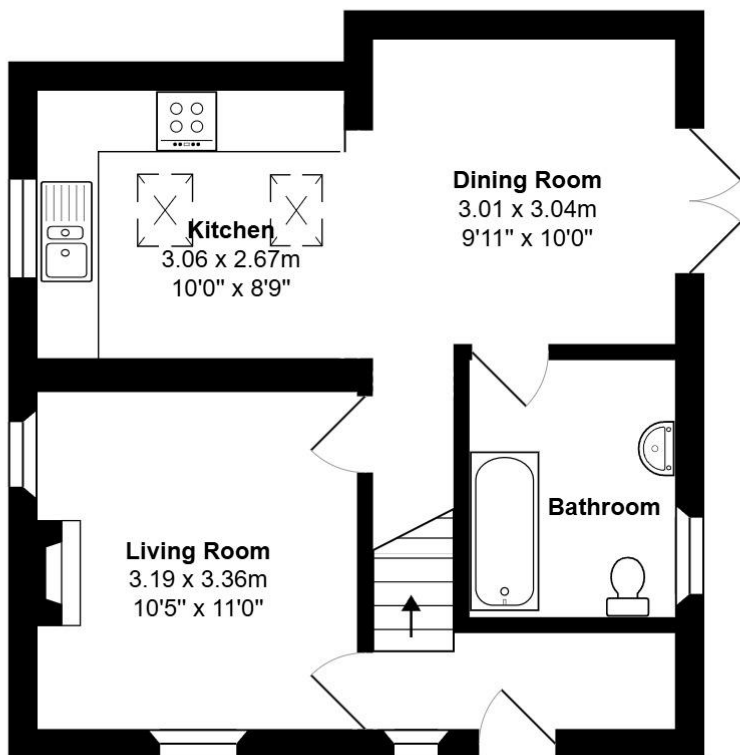
From Malmesbury Waitrose roundabout, follow the B4042 towards Brinkworth. Take the next left hand turn signposted to Lea. Proceed all the way through the village to locate the property as the last on

the right hand side directly opposite the school.

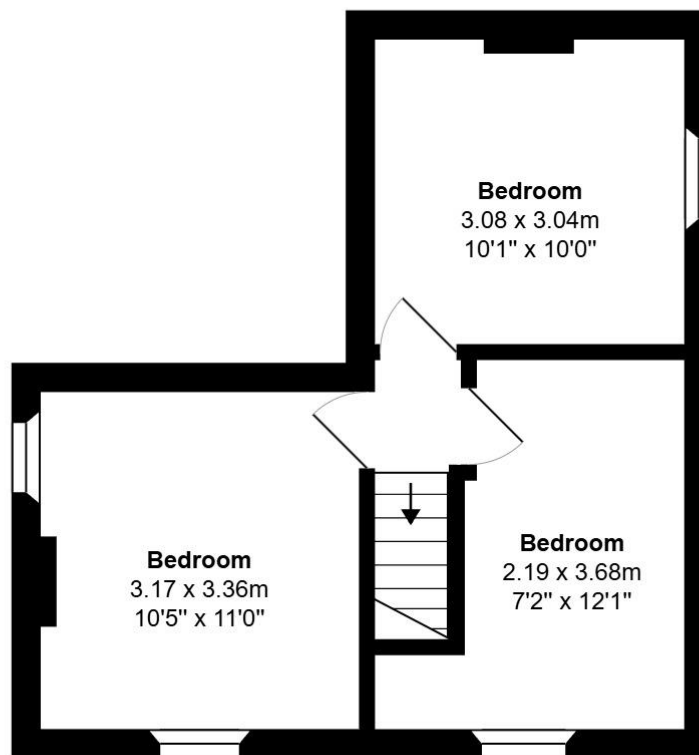
Postcode SN16 9PG

What3words: ///goat.actual.disengage





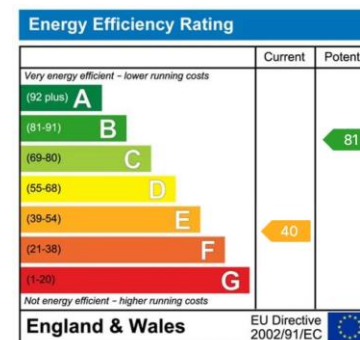
Ground Floor



First Floor

Total Area: 74.4 m² ... 801 ft²

All measurements are approximate and for display purposes only



James Pyle Holdings Ltd and any parties they are acting for hereby give notice that these details are for guidance only and cannot guarantee accuracy of any description, dimension, condition or any required permission for occupation and use. It is not company policy to test any services or appliances in properties offered for sale and these should be verified by the purchaser's solicitors. James Pyle Holdings Ltd will not be liable for any loss arising from the use of these details. No responsibility is taken for any errors, omissions or misstatements within these particulars. It should not be assumed that the property has all the necessary planning, building regulation or other consents. These particulars do not form any part of any offer or contract and must not be relied upon as statements or representations of fact. James Pyle & Co is a trading name of James Pyle Holdings Ltd, registered in England & Wales. Registered number 10927906

COTSWOLD & COUNTY (HEAD OFFICE)

The Barn, Swan Barton, Sherston SN16 0LJ

01666 840 886 or 01452 812 054

LONDON (ASSOCIATE OFFICE)

121 Park Lane, Mayfair W1k 7AG

0207 0791 577