



JAMES PYLE & CO



Gable House, Stanton St. Quintin, Chippenham, Wiltshire, SN14 6DQ

Detached modern house
 Recently updated throughout
 Generously proportioned accommodation
 4 double bedrooms
 Bathroom and 2 en-suites
 Large open open reception area
 Bespoke fully integrated kitchen
 Front and rear garden
 Driveway parking and garage store
 Village location with excellent M4 connections



01666 840 886
 jamespyle.co.uk



The Barn, Swan Barton, Sherston, Wiltshire, SN16 0LJ
 James Pyle Ltd trading as James Pyle & Co. Registered in England & Wales No: 08184953

Price Guide: £695,000

Approximately 1,798 sq.ft excluding garage store

‘This detached individual family house has been superbly updated offering spacious accommodation of around 1,800 sq.ft’



The Property

Individually built in 1985, Gable House is an excellent detached family house situated in the popular village of Stanton St Quintin. The property is superbly presented having been improved and renovated throughout making it a perfect 'turn key' home. In addition to new fixtures and fittings throughout, the property also has new windows installed and re-configured ground floor layout. The accommodation is well-proportioned extending in to around 1,800 sq.ft.

Warmed by underfloor heating throughout, the ground floor opens through a recessed porch to a spacious entrance hall. Limestone flooring continues to the generous reception space which is arranged as an L-shaped open plan configuration incorporating a carpeted living room with fireplace, a fitted bar area, and a dining room. Adjoining the dining room there is a bespoke fitted kitchen which is fully equipped with integrated Neff appliances including a dishwasher, double oven, fridge, coffee machine, warming drawers, combi microwave oven, and

an induction hob. Completing the downstairs there is a WC and a utility room leading to the garage store. On the first floor there are four double bedrooms, two of which are served by en-suites. The bathrooms have all been updated finished with Grohe fittings and complete with underfloor heating, the two en-suites with wet room style showers, whilst the main bathroom has a stylish free-standing bath beside a separate shower unit.

A gated driveway provides off-street parking in front of the garage and there is a lawn to side with mature shrub borders. The rear garden has been recently landscaped and is easy to maintain comprising a patio terrace, lawn, covered BBQ area, and pleached photinias for privacy.

Situation

The village of Stanton St Quintin is situated equidistance between the market town of Malmesbury and the larger town of Chippenham. There are excellent local walks from the doorstep, taking in the surrounding villages and

countryside. The village has a great sense of community with regular activities being ran at the village hall as well having a primary school, a Norman church, and restaurant at Stanton Manor Hotel, open to non-residents, providing a convivial atmosphere for food and drinks. Located just a mile away in Lower Stanton St Quintin is a garage with an associated well stocked Budgens store and Costa coffee shop. There is a regular bus service from the village which runs from Malmesbury to Chippenham. The neighbouring larger village of Hullavington also has a primary school, shop/post office and pub. Local pubs within the area that serve food include The Hullavington Arms at Hullavington, The Neeld Arms at Grittleton and The Salutation Inn (highly recommended by the vendors) at The Gibb. Both Malmesbury and Chippenham are within a 10-minute drive and have a comprehensive range of facilities plus secondary schooling. The village is conveniently located for access to Junction 17 of the M4 motorway providing easy commute to London, Bristol, Bath, Reading and Swindon whilst Chippenham railway station has mainline services to London, Wales and the South West. Bristol Airport is a 45

minute drive away.

Additional Information

The property is Freehold with oil-fired central heating, mains drainage, water and electricity. The property is located within a conservation area. Ultrafast broadband is available and there are some limitations to mobile phone coverage. Information taken from the Ofcom mobile and broadband checker, please see the website for more information. Wiltshire Council Tax Band F.

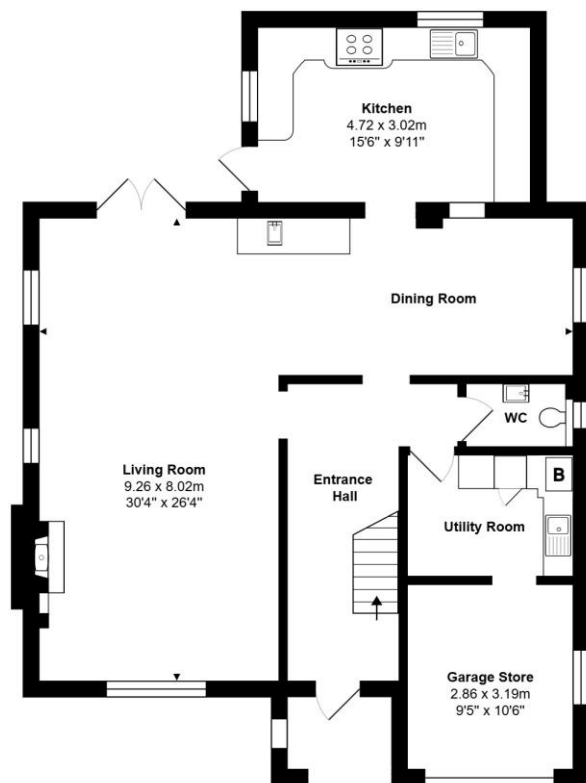
Directions

From Junction 17 off the M4, follow the A429 north towards Malmesbury and take the first left hand turn to Stanton St. Quintin. Enter the village and locate Gable House on the right hand side opposite the turning to Kington St Michael.

Postcode SN14 6DQ

What3words: ///imparting.gratuity.beaters

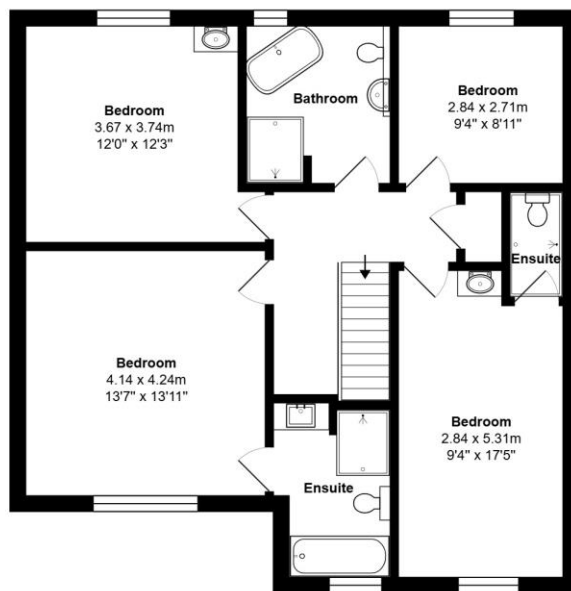




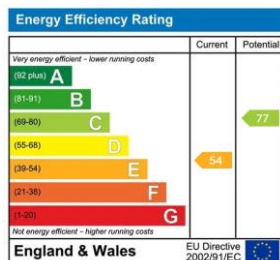
Ground Floor

Total Area: 167.1 m² ... 1798 ft² (excluding garage store)

All measurements are approximate and for display purposes only



First Floor



James Pyle Holdings Ltd and any parties they are acting for hereby give notice that these details are for guidance only and cannot guarantee accuracy of any description, dimension, condition or any required permission for occupation and use. It is not company policy to test any services or appliances in properties offered for sale and these should be verified by the purchaser's solicitors. James Pyle Holdings Ltd will not be liable for any loss arising from the use of these details. No responsibility is taken for any errors, omissions or misstatements within these particulars. It should not be assumed that the property has all the necessary planning, building regulation or other consents. These particulars do not form any part of any offer or contract and must not be relied upon as statements or representations of fact. James Pyle & Co is a trading name of James Pyle Holdings Ltd, registered in England & Wales. Registered number 10927906

COTSWOLD & COUNTY (HEAD OFFICE)

The Barn, Swan Barton, Sherston SN16 0LJ

01666 840 886 or 01452 812 054

LONDON (ASSOCIATE OFFICE)

121 Park Lane, Mayfair W1k 7AG

0207 0791 577