



16 Hollis Gardens, Luckington, Chippenham, Wiltshire, SN14 6NS

Detached modern house
 Extended accommodation with potential for
 further enlargement/remodelling
 3/4 good-sized bedrooms
 3 reception rooms
 2 bathrooms
 South-facing garden
 Double garage and driveway
 Village location with amenities
 No onward chain



01666 840 886
 jamespyle.co.uk



The Barn, Swan Barton, Sherston, Wiltshire, SN16 0LJ
 James Pyle Ltd trading as James Pyle & Co. Registered in England & Wales No: 08184953

Price Guide: £650,000

Approximately 1,537 sq.ft excluding garage

‘Situated within a desirable mature close, this detached modern house has extended accommodation with further potential to evolve’

The Property

16 Hollis Gardens is a detached modern house situated within a desirable mature close located in the very heart of the village of Luckington, just a short walk from a choice of amenities. Built of reconstructed Cotswold stone, the house has been extended over the years offering comfortable accommodation which has further potential for enlargement and remodelling to create a fashionable open plan kitchen/living arrangement.

The ground floor opens to an entrance hall with WC off and internal access to the double garage. The generous living space flows superbly as open plan and is filled with natural light comprising a living room, dining area, and a separate sitting room to the rear. This additional reception room can accommodate a ground floor bedroom if required. The kitchen lends itself to

reconfiguring as open plan and plans have been drawn. Upstairs, there are three good-sized bedrooms all with built-in storage. The principal bedroom is particularly spacious and has an en-suite shower room. The family bathroom has been refitted as a shower room.

There is driveway parking leading up to the garage and a front lawn. The rear garden is a manageable size and benefits from a sunny southerly aspect. Thoughtful planting surrounds the lawn and there are two patio terraces.

Situation

The delightful village of Luckington has its own village shop, primary school, village hall, parish church and an excellent public house. Luckington Court has been filmed previously in 'Pride & Prejudice' and the whole area is surrounded by beautiful



Cotswold countryside and the Beaufort Estate, famed for Badminton Horse Trials. The village has a strong community and a host of entertainment and social events for young and old alike. Close by is the larger village of Sherston and the market towns of Malmesbury and Tetbury offering a wide range of shops, services, excellent schools and leisure facilities. Junctions 17 & 18 of the M4 are both within 15 minutes drive providing easy commuter access to Bath, Bristol and Swindon whilst rail services to London-Paddington are available from Chippenham.

Additional Information

The property is Freehold with oil-fired central heating, mains drainage, water and electricity. The property is located within the Cotswold Area of Outstanding Natural Beauty. The house sale is subject to a grant of probate. Superfast broadband is available

and there are some limitations to mobile phone coverage. Information taken from the Ofcom mobile and broadband checker, please see the website for more information. Wiltshire Council Tax Band E.

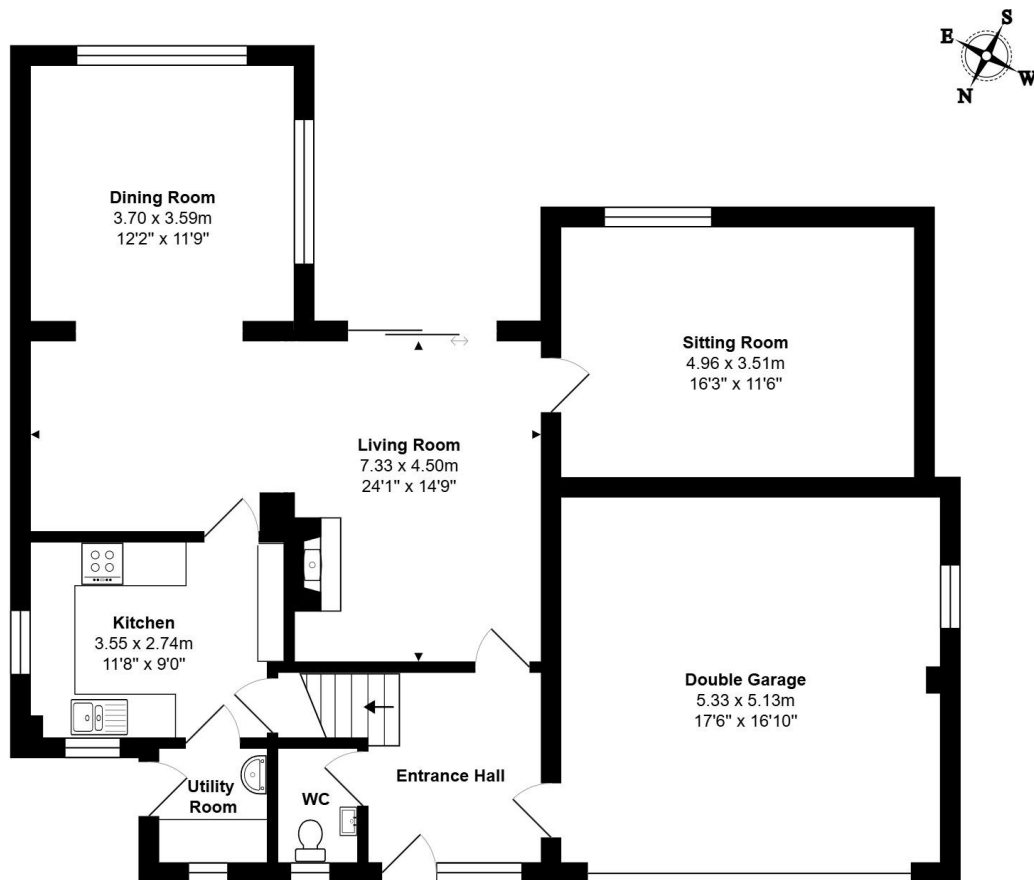
Directions

Follow the B4040 from Sherston into Luckington, pass the village green and shop and take the second left hand turn into Hollis Gardens. The property is located within the close on the right.

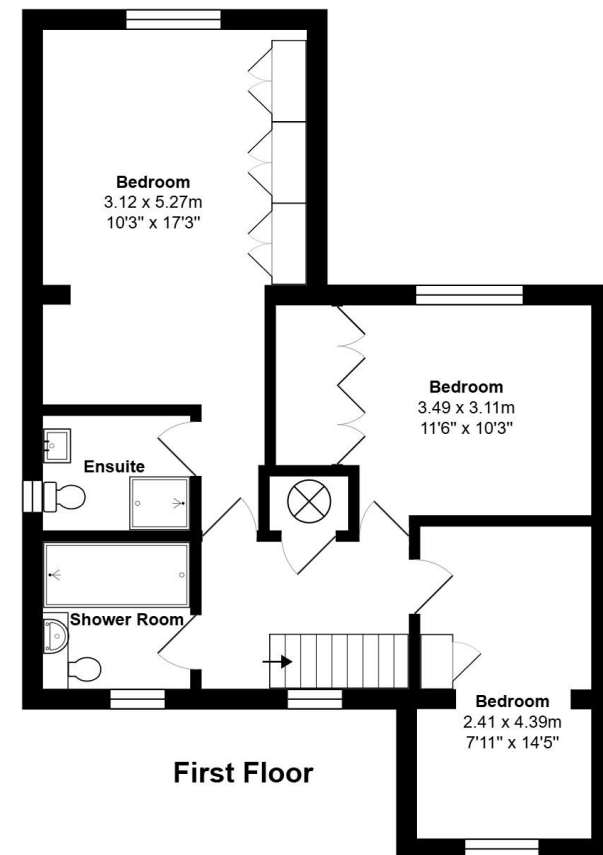
Postcode SN14 6NS

What3words: ///clicker.crabmeat.triangle





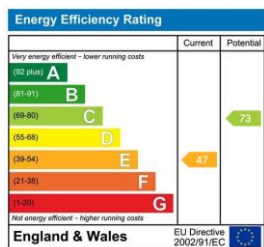
Ground Floor



First Floor

Total Area: 142.8 m² ... 1537 ft² (excluding double garage)

All measurements are approximate and for display purposes only



James Pyle Holdings Ltd and any parties they are acting for hereby give notice that these details are for guidance only and cannot guarantee accuracy of any description, dimension, condition or any required permission for occupation and use. It is not company policy to test any services or appliances in properties offered for sale and these should be verified by the purchaser's solicitors. James Pyle Holdings Ltd will not be liable for any loss arising from the use of these details. No responsibility is taken for any errors, omissions or misstatements within these particulars. It should not be assumed that the property has all the necessary planning, building regulation or other consents. These particulars do not form part of any offer or contract and must not be relied upon as statements or representations of fact. James Pyle & Co is a trading name of James Pyle Holdings Ltd, registered in England & Wales. Registered number 10927906

COTSWOLD & COUNTY (HEAD OFFICE)

The Barn, Swan Barton, Sherston SN16 0LJ

01666 840 886 or 01452 812 054

LONDON (ASSOCIATE OFFICE)

121 Park Lane, Mayfair W1k 7AG

0207 0791 577