



3 Glen Avon Court, Minety, Wiltshire, SN16 9QH



Individual detached house  
Walking distance to village shop and primary school  
4 spacious double bedrooms – master with dressing room and en-suite  
Main bathroom and 2 en-suites  
Open plan kitchen/dining room  
Living room with fireplace  
Lovely south-facing landscaped garden  
Air source heat pump  
Garage and private parking  
No onward chain



01666 840 886  
jamespyle.co.uk



The Barn, Swan Barton, Sherston, Wiltshire, SN16 0LJ  
James Pyle Ltd trading as James Pyle & Co. Registered in England & Wales No: 08184953

**Guide Price: £625,000**  
Approximately 1,924 sq ft

‘Hidden away from passing traffic tucked down a leafy drive, an individual detached house with 4 double bedrooms, 3 bathrooms, south-facing garden, parking and garage’

## The Property

This individually designed detached house is hidden away from passing traffic set down a leafy drive enjoying a peaceful private position, and yet conveniently just a few minutes' walk from the village shop and primary school. Constructed around 10 years ago as part of a small exclusive development comprising only three executive style detached homes, the property benefits from air-source heat pump heating and superbly appointed accommodation.

Boasting excellent proportions, the accommodation is arranged over three floors extending in all to 1,924 sq.ft. On the ground floor an entrance hall with cloakroom WC off opens to a front living room featuring a fireplace. To the rear there is a spacious open plan kitchen/dining room with double doors flowing out to the sunny garden. The kitchen is fitted with stylish units with built in appliances and has an adjoining a separate utility room off which has rear access. On the first floor

there is a family bathroom and three superb double bedrooms all with built in storage. The second bedroom has an en-suite shower room whilst the principal bedroom also has an en-suite and accompanying dressing room. On the top floor there is an impressive attic bedroom which can also be utilised as a hobby room or home office.

The property is set down a long drive and screened by high hedging providing a great degree of privacy. Externally, to the front there is private parking and an integral garage which could be incorporated as accommodation if desired, subject to planning. The rear south-facing garden is of particular note having been beautifully landscaped thoughtfully laid easy to maintain with paved patios, curved gravel area, a pergola and well stocked flower beds either side.

## Situation

Minety is a lively village with a strong sense of community which is echoed in the community



run shop whilst the village also boasts a pre-school and excellent primary school. The village has a wide variety of clubs and activities, a village hall, a church at Upper Minety, well respected local rugby club and tennis club. The neighbouring village of Ashton Keynes (about 1.5 miles) also has an excellent range of local amenities. Minety is located on the edge of the renowned Cotswold Water Park where there is an array of leisure facilities, walking routes and sporting activities available. The charming market town of Malmesbury is less than a 10 minute drive away boasting a comprehensive range of amenities including the very sought after Malmesbury Secondary School. The Capital of the Cotswolds market town of Cirencester (8 miles) has a further range of shops and leisure facilities whilst the road network provides good access to Swindon and to the M4 and M5 motorways. There is a mainline rail service from Kemble (5 miles) to Bristol and London reaching Paddington in about 75 minutes.

## Additional Information

The property is Freehold with air source heat pump central heating, shared treatment plant drainage, mains water and electricity. The treatment plant is shared with 2 other properties and managed by the residents with a service charge of £148.62 p/a contributing to the maintenance. Ultrafast broadband is available and there are some limitations to mobile phone coverage. Information taken from the Ofcom mobile and broadband checker, please see the website for more information. Wiltshire Council Tax Band F.

## Directions

From Malmesbury take the B4040 to Minety. As you enter the village take the left hand turn at the cross roads into Silver Street and follow the road all the way as it bends to the left into Hornbury Hill. After a short distance take the left hand turn sign posted towards the Playing Field and follow the lane down to Glen Avon Court. Sat nav postcode SN16 9QH





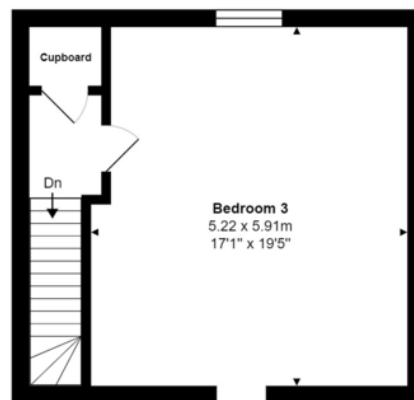


Score	Energy rating	Current	Potential
92+	<b>A</b>		
81-91	<b>B</b>		84   <b>B</b>
69-80	<b>C</b>	75   <b>C</b>	
55-68	<b>D</b>		
39-54	<b>E</b>		
21-38	<b>F</b>		
1-20	<b>G</b>		



Total Area: 178.7 m<sup>2</sup> ... 1924 ft<sup>2</sup> (excluding garage)

All measurements are approximate and for display purposes only



2nd Floor



Ground Floor



1st Floor



James Pyle Holdings Ltd and any parties they are acting for hereby give notice that these details are for guidance only and cannot guarantee accuracy of any description, dimension, condition or any required permission for occupation and use. It is not company policy to test any services or appliances in properties offered for sale and these should be verified by the purchaser's solicitors. James Pyle Holdings Ltd will not be liable for any loss arising from the use of these details. No responsibility is taken for any errors, omissions or misstatements within these particulars. It should not be assumed that the property has all the necessary planning, building regulation or other consents. These particulars do not form any part of any offer or contract and must not be relied upon as statements or representations of fact. James Pyle & Co is a trading name of James Pyle Holdings Ltd, registered in England & Wales. Registered number 10927906

COTSWOLD & COUNTY (HEAD OFFICE)

The Barn, Swan Barton, Sherston SN16 0LJ

01666 840 886 or 01452 812 054

LONDON (ASSOCIATE OFFICE)

121 Park Lane, Mayfair W1k 7AG

0207 0791 577