



Park Farm, Park Lane, Garsdon, Malmesbury, Wiltshire, SN16 9NP

Impressive barn conversion
Spectacular, peaceful location with
360-degree views
4 bedrooms plus 1 bedroom annexe suite
Magnificent 52ft kitchen/family room
Drawing room
Set within just under 2 acres
Oak finishes and underfloor heating
Garaging and parking



01666 840 886
jamespyle.co.uk



The Barn, Swan Barton, Sherston, Wiltshire, SN16 0LJ
James Pyle Ltd trading as James Pyle & Co. Registered in England & Wales No: 08184953

Price Guide: £1,850,000

Approximately 5,157 sq.ft excluding garage

‘Commanding a spectacular rural position with far-reaching panoramic views, this substantial barn conversion offers total peace and tranquillity amongst the countryside’



The Property

Park Farm is a substantial barn conversion occupying a stunning location at Garsdon with far-reaching, panoramic views over the surrounding Wiltshire countryside. The property is peacefully located, well away from busy roads and other distractions, and is set within just under 2 acres of gardens and grounds.

The barn was converted approximately 15 years ago by the present owners sympathetically retaining much of its character. The property was completed to exacting standards coupled with high quality fixtures and fittings throughout featuring beautiful solid oak finishes. Boasting generous proportions filled with natural light and designed to take full advantage of the picturesque setting, the accommodation is arranged over three floors and extends to over 5,150 sq.ft. The accommodation incorporates a useful annexe suite on the ground floor plus a versatile office/hobby room on the first floor. Underfloor heating warms the ground floor and majority of the first floor.

The ground floor accommodation centres around a stunning 52ft kitchen/family room with a timber

vaulted ceiling and fully glazed gable end looking out across the adjoining countryside. The AGA kitchen is fitted with solid timber units, granite worktops and a large island breakfast bar. Across the hall, the drawing room features a wood-burning stove and dual double doors connecting to the garden. The magnificent entrance hall has a double-height gabled frontage and impressive oak stairs leading up to the galleried landing above. The first floor accommodation comprises a family bathroom and two bedrooms which includes the principal bedroom suite benefitting from a dressing room, en-suite shower room, and delightful balcony with outstanding views. On the second floor there are two further bedrooms and another en-suite bathroom.

The flexible annexe suite could be used as an extension of the main house accommodation or is perfectly set up for a dependent relative or live-in staff. The accommodation includes a sitting room, double bedroom, en-suite and dressing room.

Externally, Park Farm is positioned along a quiet leafy country lane and screened by mature hedging to the front. A sweeping driveway provides private parking for numerous vehicles whilst a former

stable block has been converted to garaging. The barn sits amongst around 1.92 acres of grounds laid predominately to lawn. A seating terrace has been arranged off the kitchen and reception space providing a secluded area to enjoy with a sunny south-facing aspect. Up to 5 acres of adjoining land to the south could be available by separate negotiation.

Situation

The barn occupies a peaceful, rural setting on the edge of the village of Garsdon. Garsdon is an unspoilt village with a church whilst the larger village of Lea is also only 1 mile away and has the popular 'Rose and Crown' pub, primary school, and active village hall. There are lovely walks amongst the surrounding countryside. Malmesbury is the nearest town (about 3 miles) and is reputed to be the oldest borough in England created by Charter in 880 AD by Alfred the Great. Today, the High Street has numerous independent shops, pubs, restaurants and cafes, there is also a new Aldi store, Waitrose store and a regular weekly Farmer's market. The town has an excellent choice of both primary and secondary schools and very good recreational and leisure facilities. The M4 motorway

Junction 17 to the south provides fast road access to Bristol and the West Country while Junction 16 gives access to London. Main line rail services are available from Chippenham, Swindon and Kemble (Paddington in about 75 minutes).

Additional Information

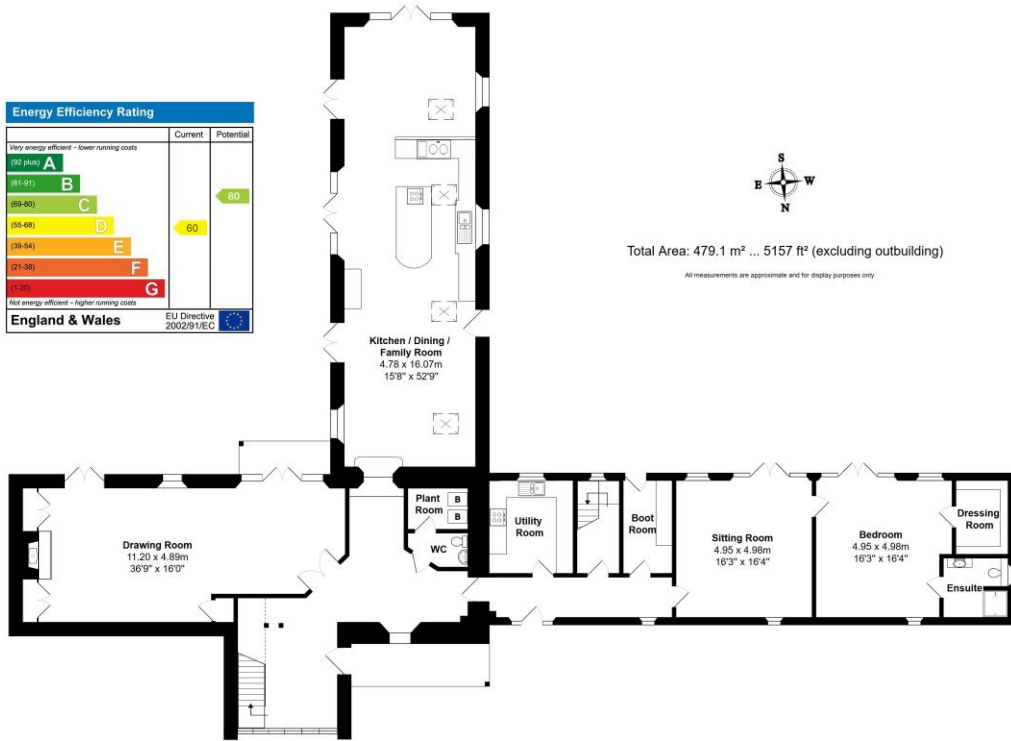
The property is Freehold with oil-fired central heating, private drainage, mains water and electricity. There is an integrated CCTV system and sprinkler system. Ultrafast broadband is available and there are some limitations to mobile phone coverage. Information taken from the Ofcom mobile and broadband checker, please see the website for more information. Wiltshire Council Tax Band G.

Directions

From Malmesbury, follow the B4040 to Charlton then take the first right hand turn signed towards Garsdon and Lea. At the crossroad, take the left hand turn into Garsdon then take the next right onto Park Lane. Continue along the lane to locate the property on the right hand side half way down. Postcode SN16 9NP
What3words: ///archive.enjoys.mulled



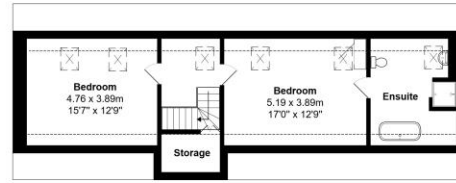
Energy Efficiency Rating		Current	Potential
Very energy efficient - lower running costs			
(92-100)	A		
(81-91)	B		
(69-80)	C		
(55-68)	D		
(39-54)	E	60	80
(21-38)	F		
(1-20)	G		
Not energy efficient - higher running costs			
England & Wales		EU Directive 2002/91/EC	



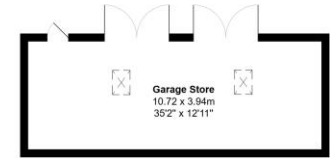
Ground Floor

Total Area: 479.1 m² ... 5157 ft² (excluding outbuilding)

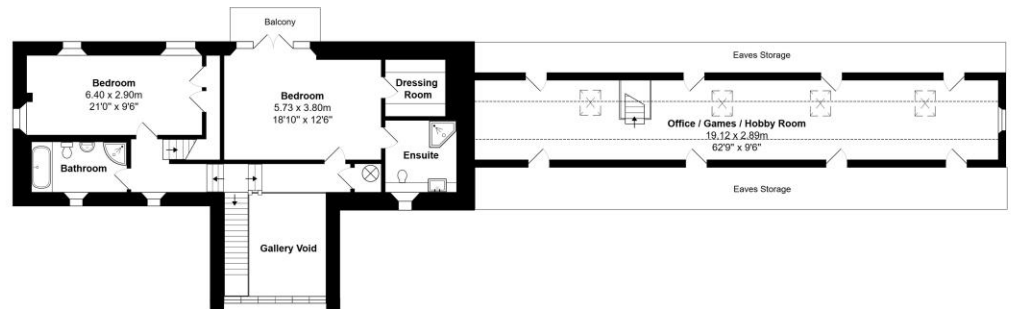
All measurements are approximate and for display purposes only



Second Floor



Outbuilding



First Floor



James Pyle Holdings Ltd and any parties they are acting for hereby give notice that these details are for guidance only and cannot guarantee accuracy of any description, dimension, condition or any required permission for occupation and use. It is not company policy to test any services or appliances in properties offered for sale and these should be verified by the purchaser's solicitors. James Pyle Holdings Ltd will not be liable for any loss arising from the use of these details. No responsibility is taken for any errors, omissions or misstatements within these particulars. It should not be assumed that the property has all the necessary planning, building regulation or other consents. These particulars do not form any part of any offer or contract and must not be relied upon as statements or representations of fact. James Pyle & Co is a trading name of James Pyle Holdings Ltd, registered in England & Wales. Registered number 10927906

COTSWOLD & COUNTY (HEAD OFFICE)

The Barn, Swan Barton, Sherston SN16 0LJ

01666 840 886 or 01452 812 054

LONDON (ASSOCIATE OFFICE)

121 Park Lane, Mayfair W1k 7AG

0207 0791 577