



Wood Street, Wood End, Atherstone

burchell
edwards



Property Description

This ideal first home or investment is offered for sale with no onward chain. The property offers a spacious lounge over 22 feet long leading on to a good sized kitchen. The garden is sure to please being well maintained with mature shrubs and plants adding to the appeal.

The home features two bedrooms along with a wet room- all ready for a new owner to enjoy. Call us today for more information and to see inside!

Entrance Porch

Double glazed windows to side elevation.

Lounge

Bow window to front elevation and central heating radiator.

Kitchen

Double glazed window to rear elevation, door to garden, a range of wall and base units with work surface over incorporating a sink with drainer unit, gas hob, space for appliances, fridge freezer, space and plumbing for washing machine and tumble dryer.



Landing

Loft access via hatch and all doors off.

Bedroom One

Two double glazed windows to front elevation and central heating radiator.

Bedroom Two

Built in furniture.

Wet Room

Double glazed window to rear elevation, W.C, wash hand basin, walk in shower and central heating radiator.

Loft Space

Boarded.

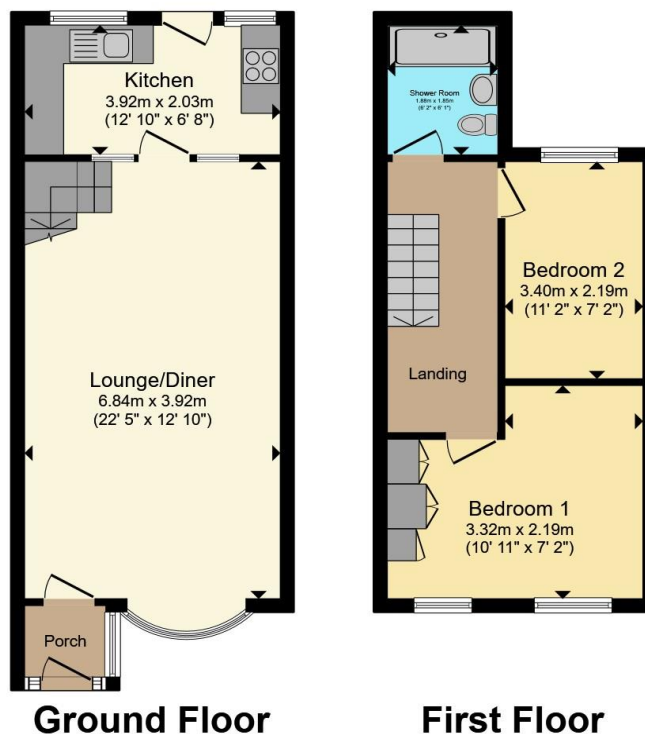
Rear Garden

Slabbed patio area, block paved patio area, large lawned area, storage shed, mature shrubs and seating area.









Total floor area 67.9 m² (730 sq.ft.) approx

This floor plan is for illustrative purposes only. It is not drawn to scale. Any measurements, floor areas (including any total floor area), openings and orientation are approximate. No details are guaranteed, they cannot be relied upon for any purpose and they do not form part of any agreement. No liability is taken for any error, omission or misstatement. A party must rely upon its own inspection(s). Powered by www.propertybox.io



To view this property please contact Burchell Edwards on

T 01827 66400
E tamworth@burchelledwards.co.uk

1 Bolebridge Street
TAMWORTH B79 7PA

EPC Rating: Council Tax
Awaited Band: B

Tenure: Freehold

view this property online burchelledwards.co.uk/Property/TAM207293



1. MONEY LAUNDERING REGULATIONS Intending purchasers will be asked to produce identification documentation at a later stage and we would ask for your co-operation in order that there will be no delay in agreeing the sale. 2. These particulars do not constitute part or all of an offer or contract. 3. The measurements indicated are supplied for guidance only and as such must be considered incorrect. Potential buyers are advised to recheck measurements before committing to any expense. 4. We have not tested any apparatus, equipment, fixtures, fittings or services and it is in the buyers interest to check the working condition of any appliances.

Burchell Edwards is a trading name of Connells Residential which is registered in England and Wales under company number 1489613, Registered Office is Cumbria House, 16-20 Hockliffe Street, Leighton Buzzard, Bedfordshire, LU7 1GN. VAT Registration Number is 500 2481 05.

See all our properties at www.burchelledwards.co.uk | www.rightmove.co.uk | www.zoopla.co.uk

Property Ref: TAM207293 - 0004